



Coping with decarbonisation

Dr. Marie Claire Brisbois

Senior Lecturer in Energy Policy, University of Sussex



cintran

Unravelling the Challenges
of Structural Change

Four Focus Regions:

- ▶ Rhenish Mining Area (Germany)
- ▶ Silesia (Poland)
- ▶ Western Macedonia (Greece)
- ▶ Ida-Virumaa (Estonia)



How people cope with decarbonisation depends on their context and the resources they have

Resist




Adapt






Transform





What types of coping strategies support people-centred just transitions?

Strategies that:

-  Are co-developed and meaningfully implemented through inclusive collaboration and deliberation
-  Create new economies that distribute the benefits of economic activity more widely than in the current system
-  Allow people options to develop new skills and opportunities while being supported financially



Ensuring people-centred just transitions means supporting coping strategies that address current injustices, not anticipated future injustices





Thank You

m.c.brisbois@sussex.ac.uk

May 2022

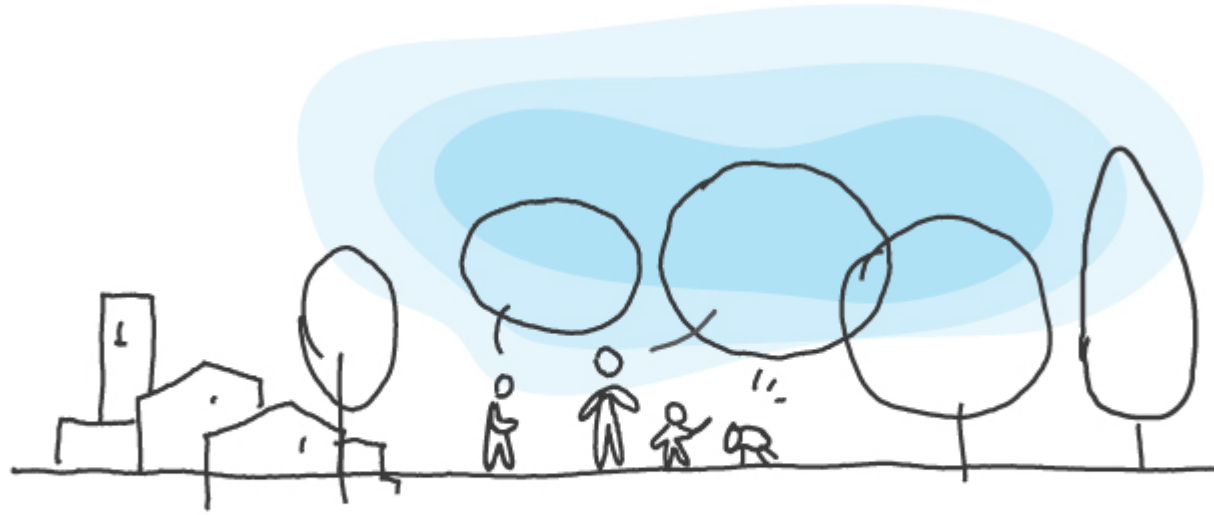
CINTRAN's Coal+ Regions in Transition event series

Date: next Thursday, 19 May 2022 10:00 – 11:00 (CEST)

Focus: Territorial Just Transition Plans, in Process and in Practice

Focus Countries: Germany, Greece, Hungary, and Bulgaria

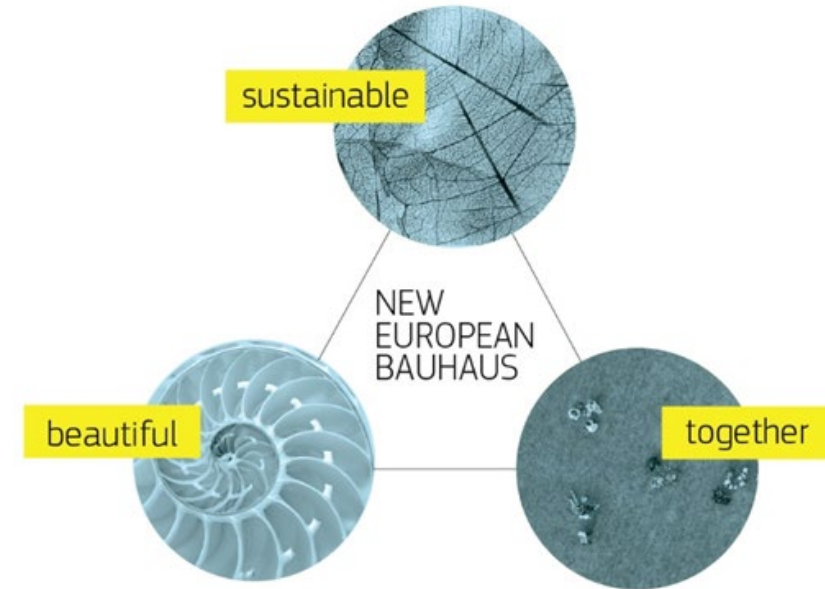
Registration: cintran.eu

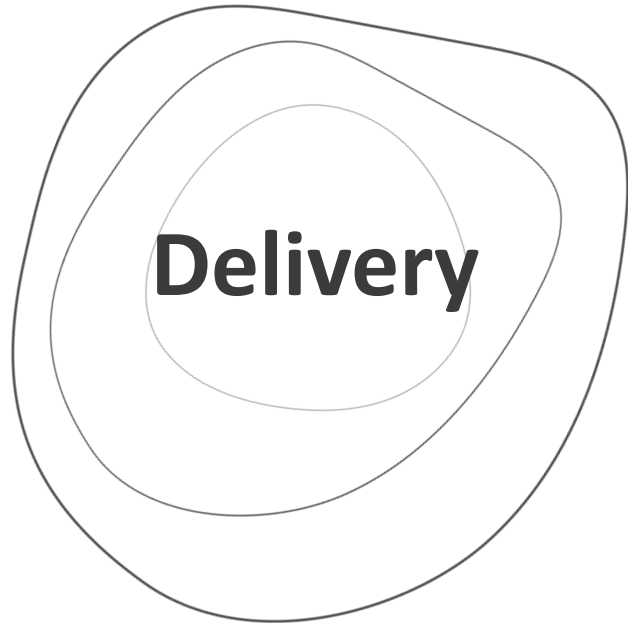


New European Bauhaus
beautiful | sustainable | together

New European Bauhaus

- **Principles:** local, participatory and transdisciplinary approach
- **Thematic axes :**
 - Reconnecting with nature
 - Regaining a sense of belonging
 - Prioritising the places and people that need it the most
 - The need for long term, life cycle thinking in the industrial ecosystem

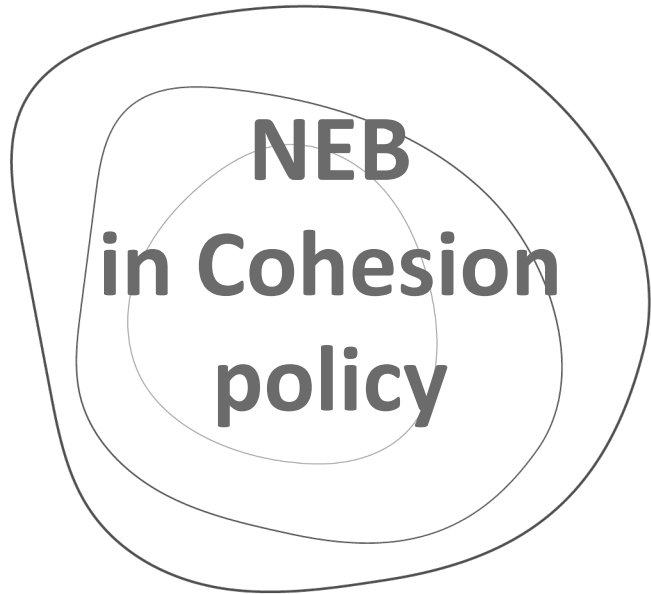




Impacts at 3 levels

- Transforming places on the ground
- Transforming of the enabling ecosystem for innovation
- Diffusing of new meanings through education and culture





Embedding NEB in cohesion policy programming documents:

Communication 573(2021): the European Commission invites Member States to:

- introduce the New European Bauhaus in their socio-economic and territorial development strategies and to reflect their commitment to support and mainstream the New European Bauhaus in the implementation of cohesion policy 2021-2027 as part of the Partnership Agreements and relevant programmes;
- take up the New European Bauhaus financial instrument to finance projects on the ground

- > embed NEB-related references in Partnership Agreements and Programmes 2021 – 2027

-> support the concrete delivery of NEB.





DG REGIO's main support actions

Prizes (2021, 2022)

- spotlight on inspirational examples and ideas by young talents
- 2021 edition: winners announced on 16 Sept. 2021
- 2022 edition: public vote open until 16 May, winners to be announced in June

Cast your vote here: <https://prizes.new-european-bauhaus.eu/>

Support to [NEB local initiatives](#) (2022-2023)

- 1) call to select the candidates that will receive technical assistance – **DDL to apply – 23 May 2022**
- 2) deliver support on the ground for incubation of around 20 NEB projects, municipalities <100,000 inhabitants;
- 3) develop NEB - related multi-disciplinary methodology; roadmaps; toolkit; conference, etc.

New European Bauhaus Urban Development Fund (Off-the-shelf financial instrument)

- Developed in cooperation with the European Investment Bank;
- launch event planned in June 2022

European Urban Initiative /Urban Innovative Actions Dedicated call

- The first call under the new generation of Urban Innovative Actions 2021-2027 will be dedicated to the NEB (**Q3 in 2022**)
- The projects would include buildings/infrastructure components; municipalities > 50,000 inhabitants



#NewEuropeanBauhaus



beautiful | sustainable | together



<https://europa.eu/new-european-bauhaus>



@neweuropeanbauhaus



#NewEuropeanBauhaus



<https://www.pinterest.com/eucommission/new-european-bauhaus/>

Thank you!
Questions?

THE SAXONY-ANHALT PROJECT

Together for a New European Bauhaus

Concept

When the question of a **New European Bauhaus** is raised today, Saxony-Anhalt and Dessau are addressed, together with the **Bauhaus Foundation in Dessau**, the **Anhalt University of Applied Sciences** with its departments of architecture and design, **Burg Giebichenstein, University of Art and Design** and the **Martin-Luther-University in Halle** as well as network partners **SALEG**, the **Forum Rathenau** at the former coal-fired power plant in Zschornewitz, the **Fraunhofer Gesellschaft** and the **city of Zeitz**. Together, they build the Saxony-Anhalt Project.

The project idea has been inspired by the Fibonacci Sequence as it is based on a growing network which links global matters to individual projects **reaching out from Saxony-Anhalt to other European** regions. It comprises educational, creative, spatial and urban practices and aims at **designing as a social task** – to be “**accessible and inclusive for all.**” (NEB)

Social Transformation = Cultural Transformation

For almost 150 years, the Central German lignite mining region was one of the most important deposits of fossil fuels. Coal led to the radical transformation of a formerly rural landscape – this connects with other lignite mining regions of the world. It has shaped people, work, living together and communities.

In the face of climate change, the coal phase-out is becoming inevitable. **How can ecological and social transformation succeed? It essentially becomes a cultural one.** In order to address successfully the climate emergency, it is key “to develop narratives and frameworks that can touch people and help inspire us to move toward climate neutral living.” (NEB) It takes more than the management of post-mining landscapes and brownfield sites, the development of new energy sources and environment-friendly industries. **A radical cultural shift toward sustainable ways of living** is needed to achieve an ecologically and socially just world.



© Dessau Bauhausköpfe/
Stiftung Bauhaus Dessau



Students Anhalt University
© HSA