



# Processing Sustainability and resilience for post-mining Regions

*Brussels,  
November 2018*

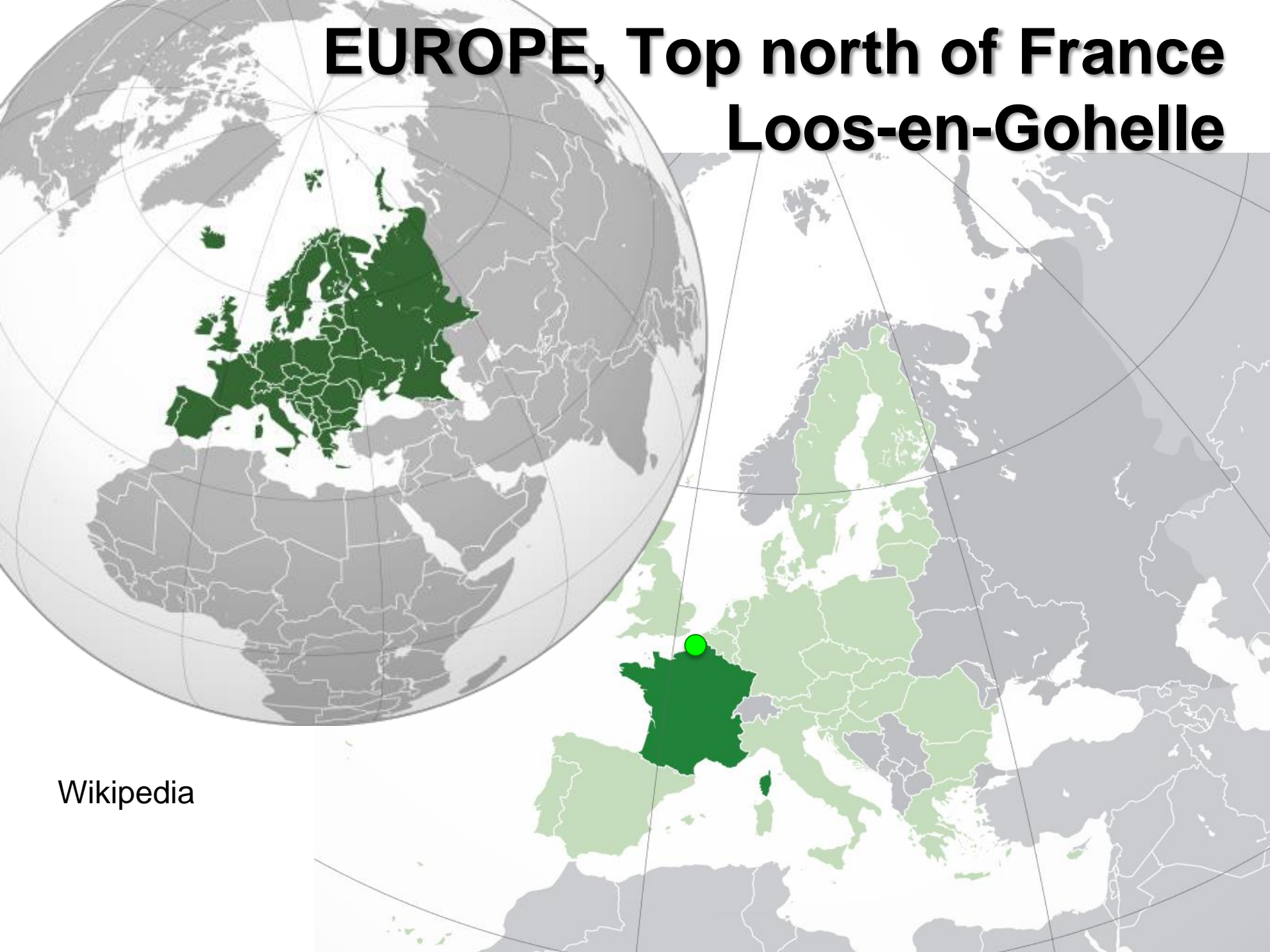
*Jean-François CARON  
Mayor of Loos-en-Gohelle  
Chair of Cd2e*



A photograph of a dirt road winding through a dense forest of bare trees. The road is the central focus, leading the eye into the distance. The trees are dark and leafless, creating a somber and somewhat mysterious atmosphere. The lighting is soft, highlighting the texture of the dirt and the intricate patterns of the branches.

# 1. The local context

# EUROPE, Top north of France Loos-en-Gohelle

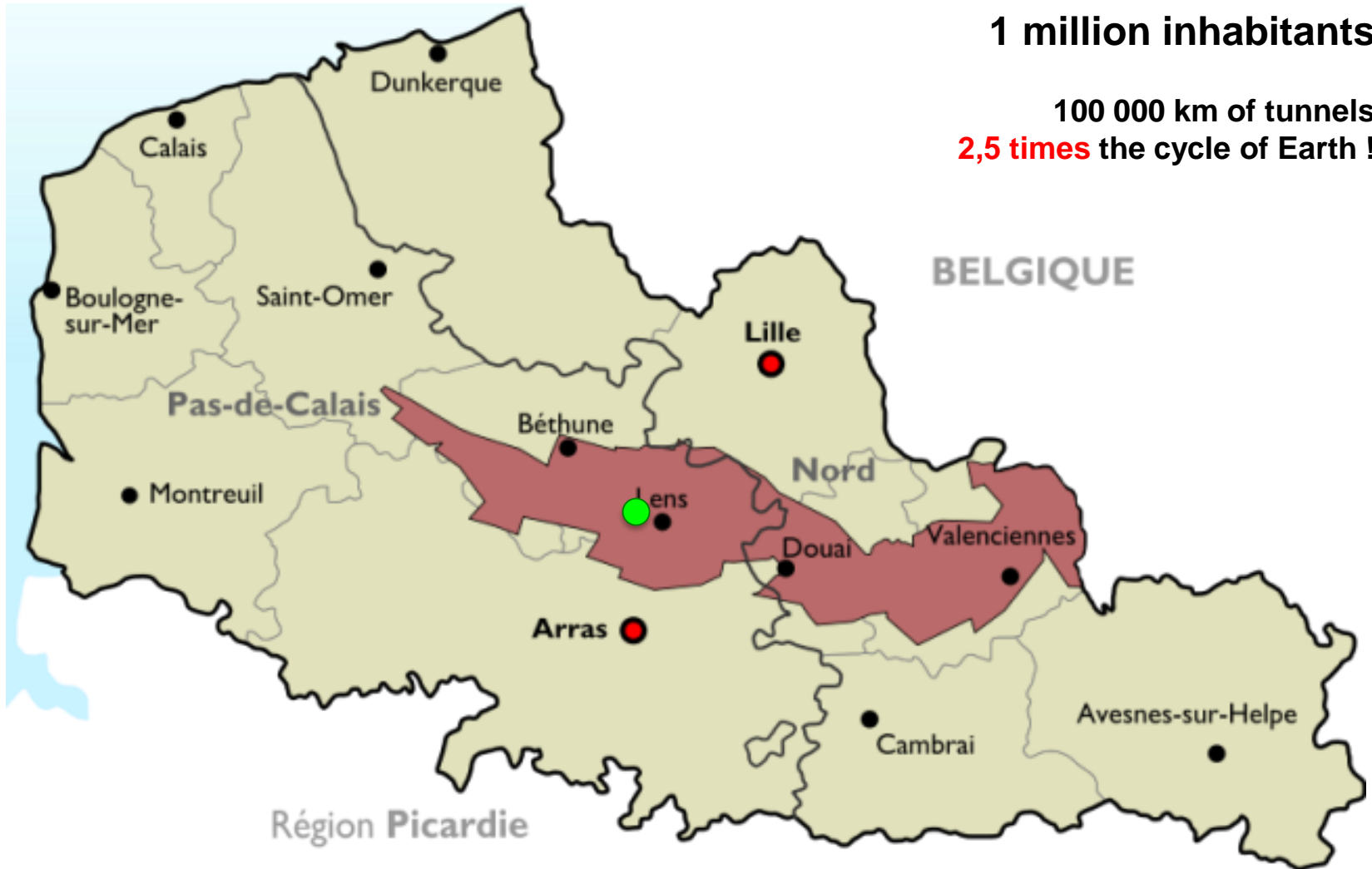


Wikipedia

# FORMER MINING BASSIN 1700 - 1990

1 million inhabitants

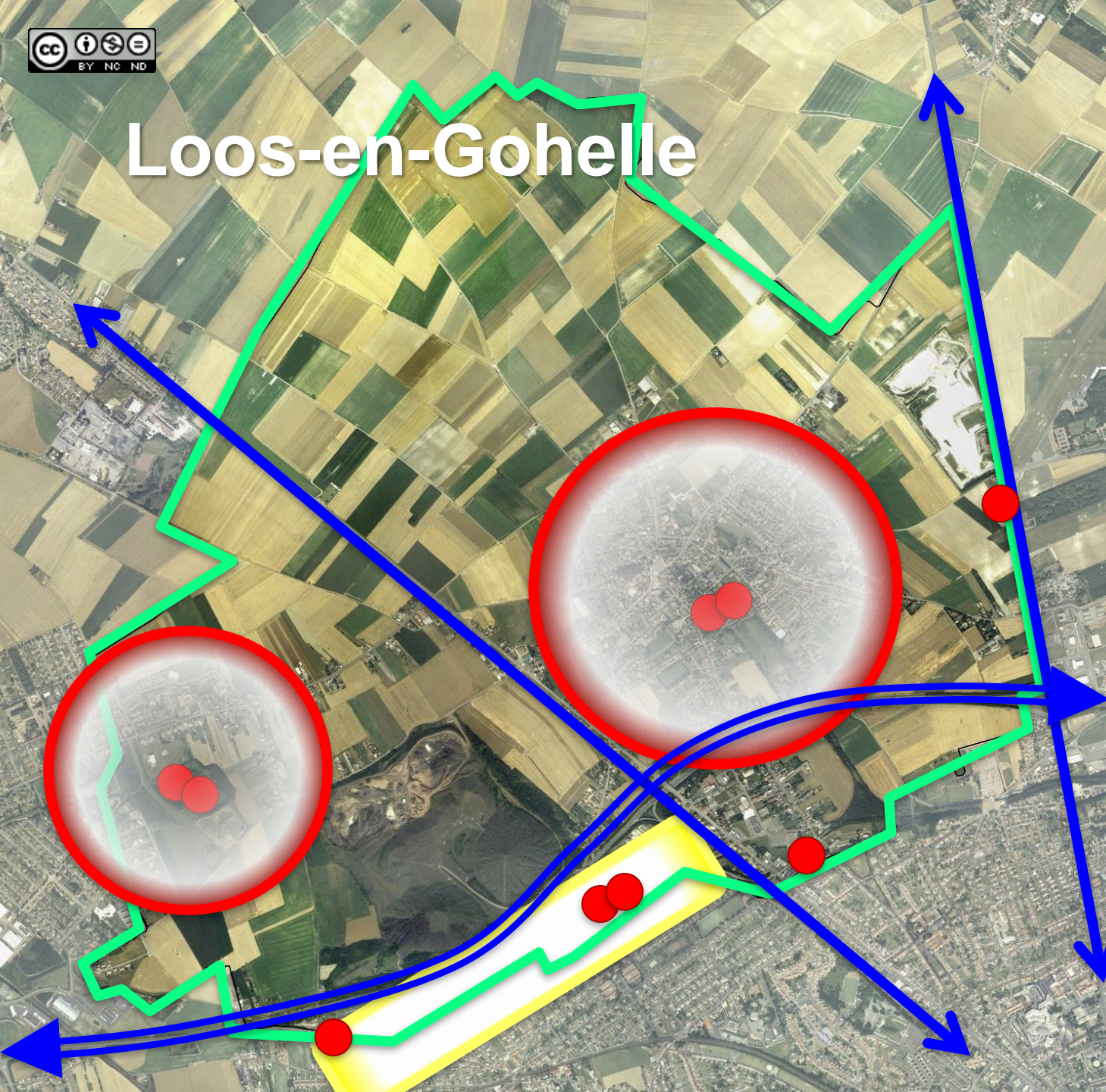
100 000 km of tunnels  
**2,5 times** the cycle of Earth !







# Loos-en-Gohelle



- 5 times destroyed
- 7000 inhabitants
- 8 slagheaps 9 mine pits
- Coal mining 1850 – 1986
- Migrants from 29 countries
- 3 main roads
- 2 main city hubs



# Life in the mining cities

LOOS-EN-GOHELLE. - Vue générale de la Cité N° 5, des Mines de Béthune.



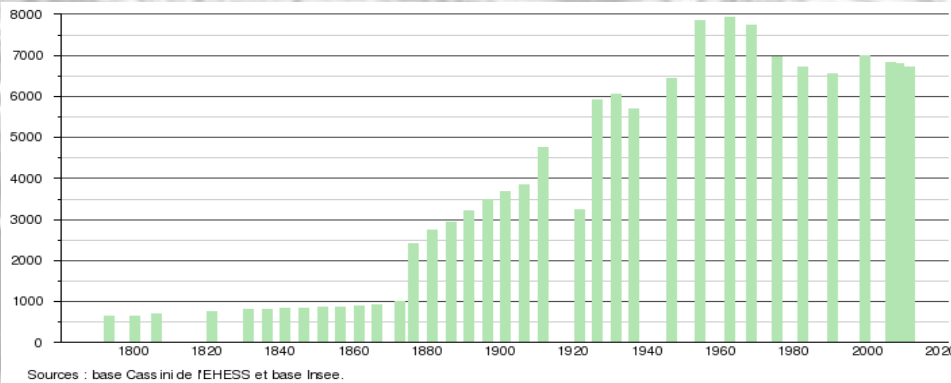
BULLY-GRENAY. - Fosse n° 5 — LOOS-EN-GOHELLE.





# Post mining heritage

- Population x 10 in 100 years
- 9 pits, 6 seats, 8 slag heaps
- 15 m high collaspe !
- 20% waste land
- Unemployment (lost of 220 K mining jobs)
- 1100 houses destroyed
- Negative image of ourselves





# Why speaking about Loos ?





# Demonstrator for French Energy and Environment State Agency

**A D E M E**



Agence de l'Environnement  
et de la Maîtrise de l'Energie

# Demonstrator of TIR





A dirt road winding through a dense forest of bare trees. The road is light-colored and curves slightly to the left in the distance. The trees are dark and leafless, creating a dense canopy. The overall scene is dimly lit, suggesting a forest interior.

## **2. Feedback of our method**

# 1980 Values, **culture**, identity

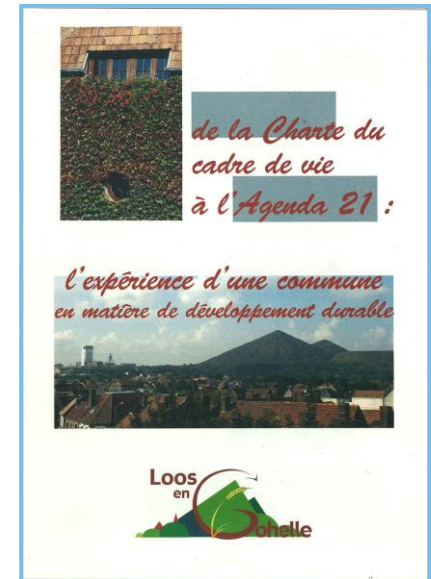
- Work on memory
- Morné the ancient world
- Host the new world to come
- Make it desirable
  - *Narrative Festival since 1984*
  - **It helps later the economy !**





# 1990 Develop and share a **vision** (**social and environmental diagnosis**)

- Participative revision of our city planning document
  - From urbanism to Life Frame City CHARTER built with the people (process of 5 years !)
- **First experiments (make the story become true !)**
  - Ecobuilding since 1997
- Start to reconvert the wasted land and buildings...



CHAÎNE DES TERRILS



# The pit « 11/19 » at this time...



CHAÎNE DES TERRILS





# 2000 Sustainability and leading effects on economy

- **Implementation** of the Life frame Charter
- People and citizen involvement
  - Tools and methodology : high tech process !
- « **Project** » thinking and organising
  - Ecosystemic approach !
- The pit 11/19 develops

# From « pit » to « ecoactivity hub 11/19 »



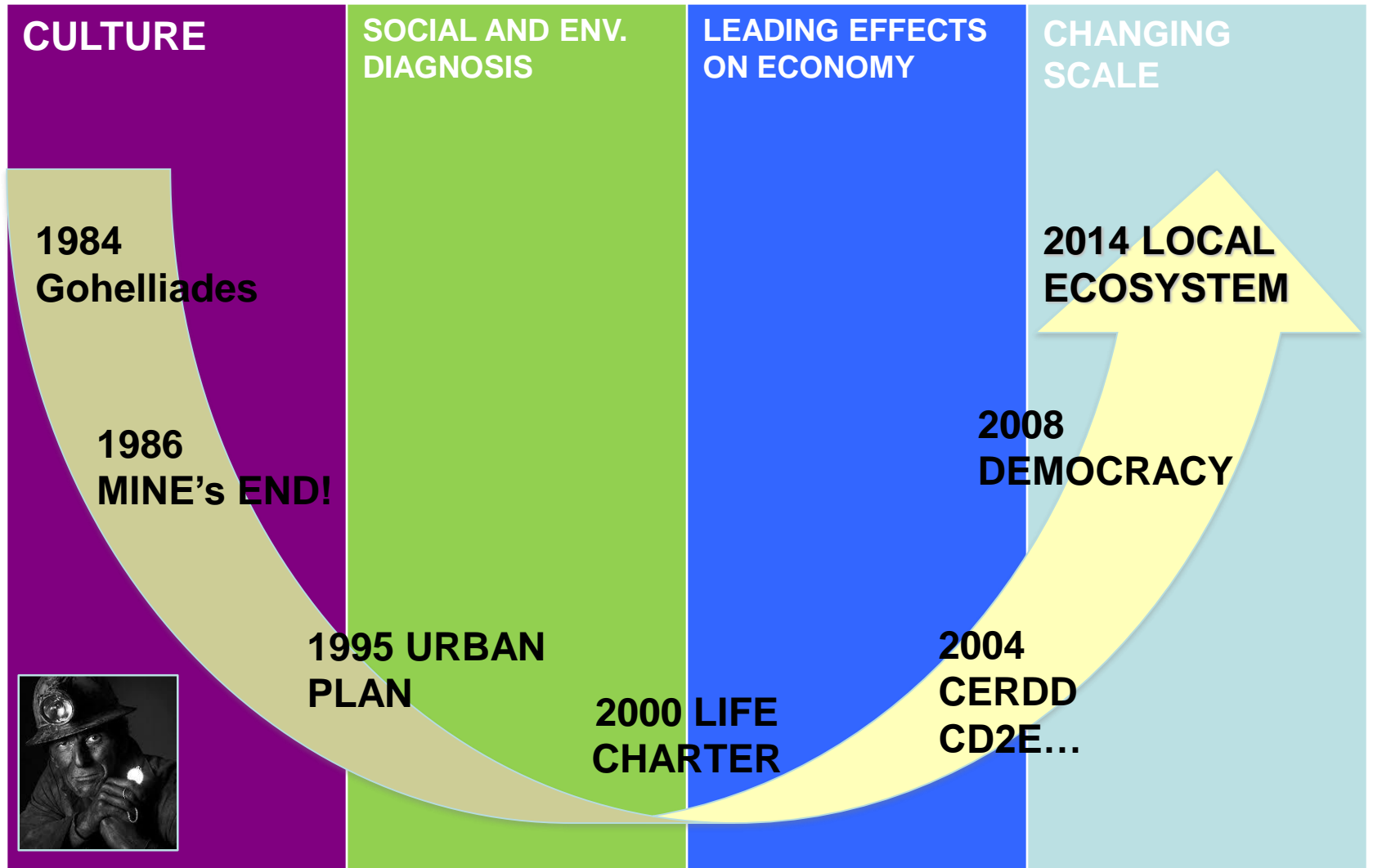


# 2010 Systemic results appear

- **Democratic results**
  - 82,1% 2008 ; 100% 2014
- **Mediatic resultst**
  - Pilote City for Sustainability
- **More and more projects !**
  - Solar church, ecobuildings, water saving, jobs, World Heritage



# DYNAMIC OF CHANGE



30 years. Today we can make it faster and more efficient



A photograph of a dirt road winding through a dense forest of bare trees. The road is the central focus, leading the eye into the distance. The trees are dark and leafless, creating a somber and somewhat mysterious atmosphere. The lighting is soft, highlighting the texture of the dirt and the intricate patterns of the branches.

# 3. Results



# NATURE

- **WATER SAVING**
  - And money !
- **GREEN BELT**
  - People happy
- **NO CHEMICALS**
  - Better health
- **BIODIVERSITY**







# ENERGY and ECOBUILDING

- **ENERGY TRANSITION**
  - 100% cover by renewables in 2040
- **ECOBUILDING**
  - Since 1997
- **ECO- HOUSE RETROFITTING**
  - Ecomaterials (straw, hemp, old jean's)
  - Territorial branch
  - Local craftsmen
  - Cooperation
- **DEVELOP COMPETENCES**
  - Cd2E
  - « Fondation d'Auteuil »  
350 young people/year



# ECONOMY

- **JOBS**

- 350 between 1999 et 2009
- 150 ecojobs on the « 11/19 »
- More shops

- **Less unemployment**

- 4 points less than the local average
- Around 14% (still high !)

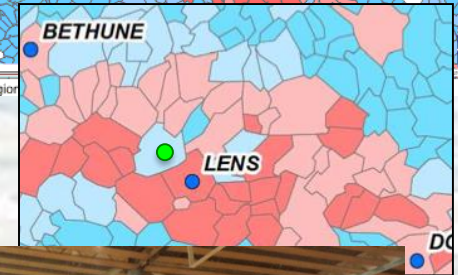
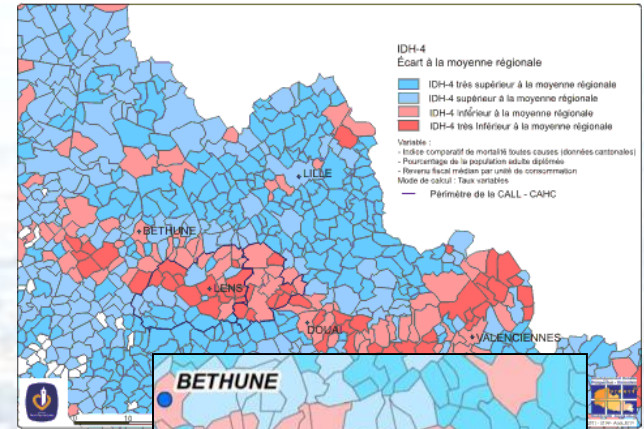
- **Wellbeing**

- HDI better than regional average
- Work on new wealth indicators

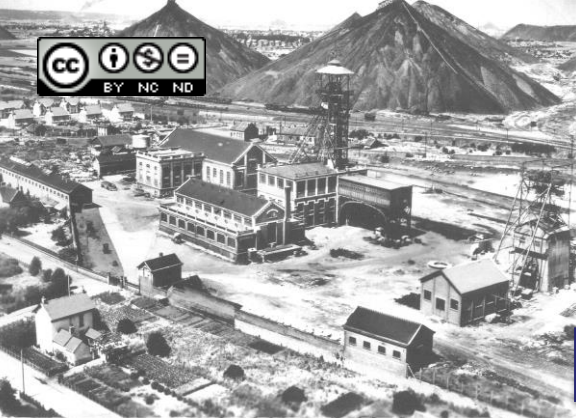
- **New economics**

- Circular
- Fonction
- Cooperation
- Territorial approach (Ecobuilding)

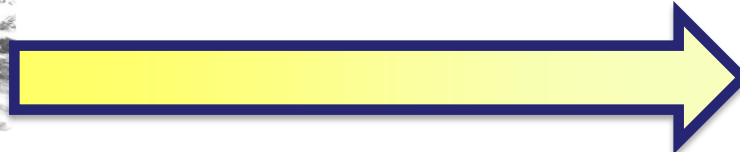
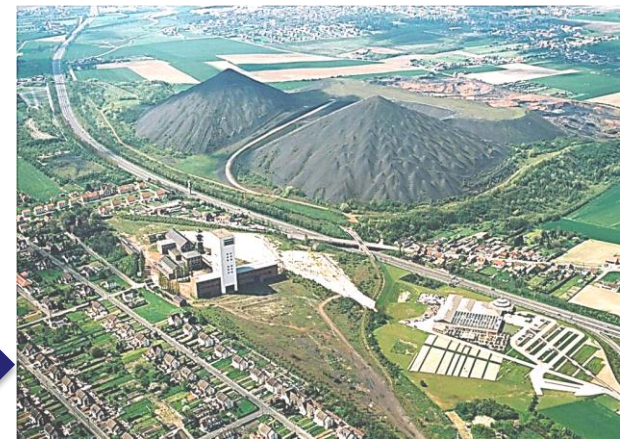
Carte 4 : DÉCLINAISON COMMUNALE DE L'INDICE DE DÉVELOPPEMENT HUMAIN (IDH-4) EN NORD-PAS-DE-CALAIS EN 2007







# From the mine toward smart city



## CULTURAL HERITAGE

## PUBLIC FUNDS

## PRIVATE FUNDS

## ECO-HUB

# 1986

Mine ends up



CHAÎNE DES TERRILS



Communauté d'Agglomération de Lens-Liévin



Région Nord-Pas de Calais



Agence de l'Environnement et de la Métrise de l'Énergie



# 2016



# ECOTRANSITION TURBINE

## French ecoactivity hub

Ecohousing  
project

Quadraparc  
business parc

Ecobuilding  
learning  
center

Solar platform  
Lumiwatt

Ecoactivities  
business incubator

Réhafutur I

Life Cycle  
Analysis  
center

Circular  
economy  
center TEAM<sup>2</sup>

Cd2e

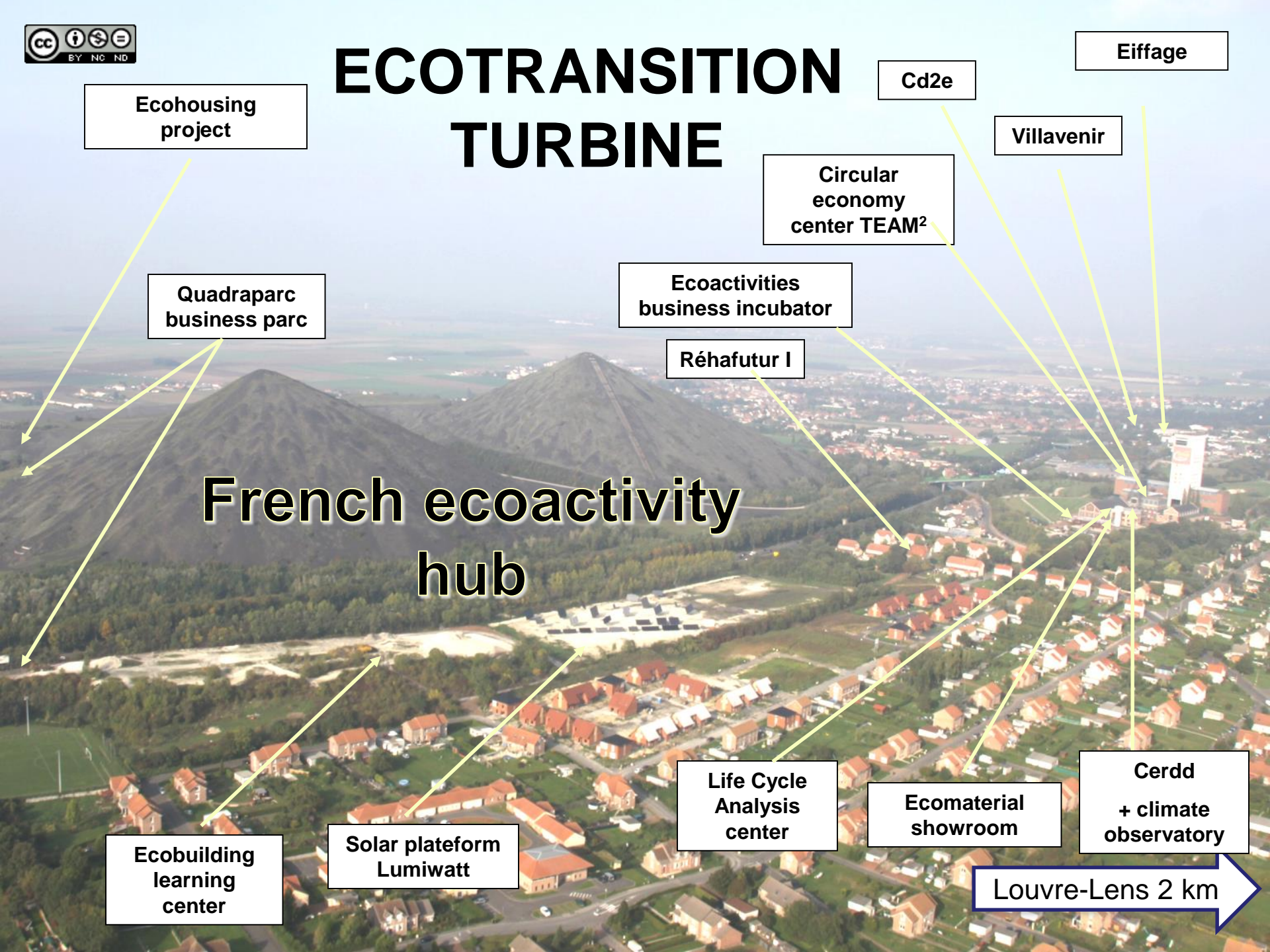
Ecomaterial  
showroom

Louvre-Lens 2 km

Villavenir

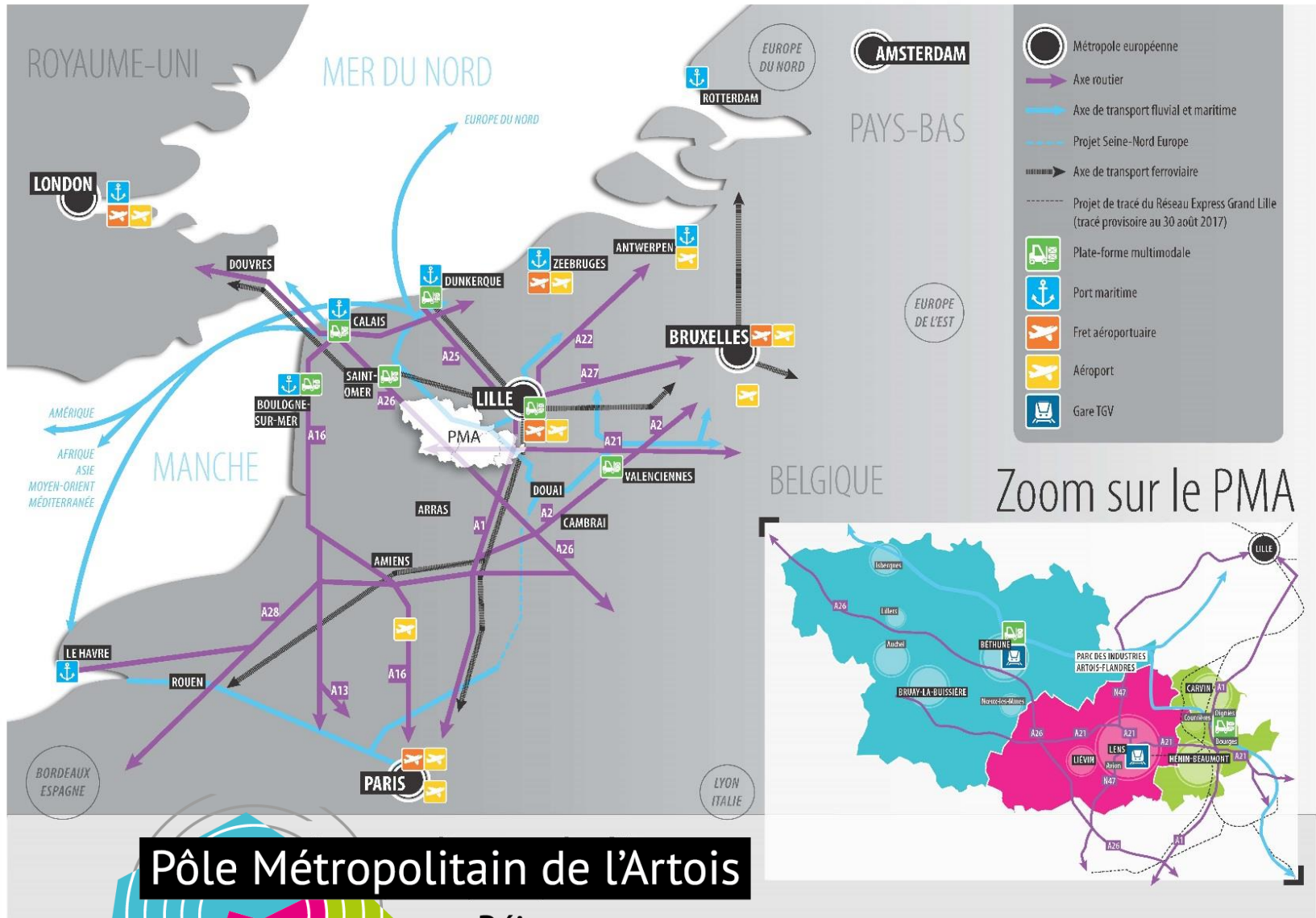
Cerdd  
+ climate  
observatory

Eiffage





# The time has come to scale it up : from Loos to the Metropole of Artois



**Pôle Métropolitain de l'Artois**

Réinventons-nous



# le projet à porter :

## pour un territoire démonstrateur



... nous étions  
l'énergie d'hier,  
devenons l'énergie  
de demain...

# la Turbine

de l'éco-transition

### Un levier de changement d'échelle pour un territoire d'excellence

#### L'axe de la Turbine

LA BASE est "augmentée" et  
ses acteurs sont renforcés dans leurs missions.

#### Le Quadraparc 3.0

Un nouveau parc d'activité dédié  
au déploiement des entreprises,  
artisans et services de l'éco-transition

#### La recherche/formation s'étoffe et se spécialise.

De nouvelles filières et sites de  
formation d'excellence

#### Des villes deviennent cités pilotes

et portent des  
réalisations remarquables  
> Visibilité - Notoriété - Fierté

#### Des initiatives et projets innovants peuvent investir

toutes les facettes de l'éco-transition

#### Des entreprises se créent, s'implantent, se spécialisent

et recrutent localement

#### Chaque chantier d'éco-rénovation devient site d'application

formation, spécialisation, recrutement...



la Turbine  
de l'éco-transition







# 5. This brings results !





A dirt road winding through a dense forest of bare trees. The road is light-colored and shows tire tracks. The trees are dark and leafless, creating a somber atmosphere. The text "4. Source code" is overlaid in white on the road.

## 4. Source code





# 1. Assume your heritage







**2. Develop a vision based on  
your trajectory**





# 3. Involve people







**4. Tell the story you want to become true**







# Source code of our transition method



Thanks !

Email : [contact@loos-en-gohelle.fr](mailto:contact@loos-en-gohelle.fr)



Twitter : @LoosEnGohelle / @CaronJF



Youtube : LoosTV Officiel