

Post-industrial landscape transformation towards development of geotourism and recreation in Poland

dr hab. Joanna Kulczycka

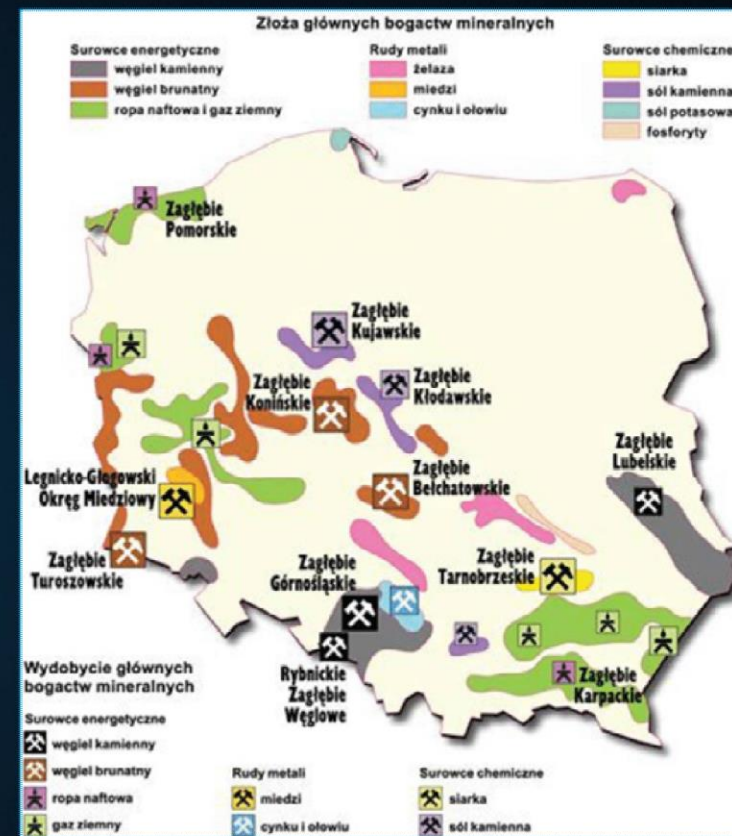
Mineral resources in Poland versus global initiative

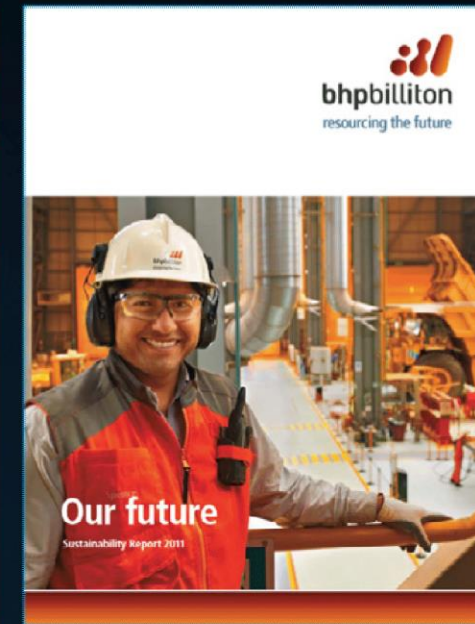
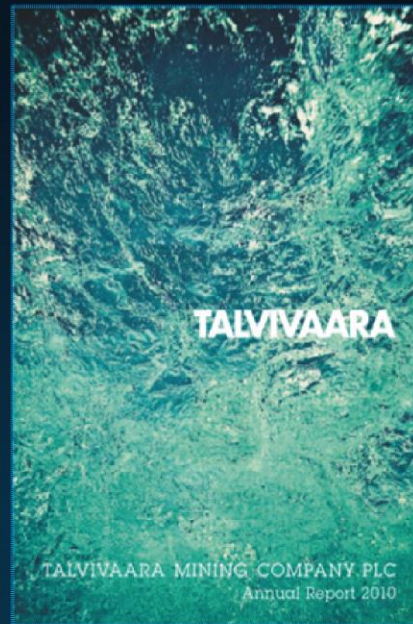
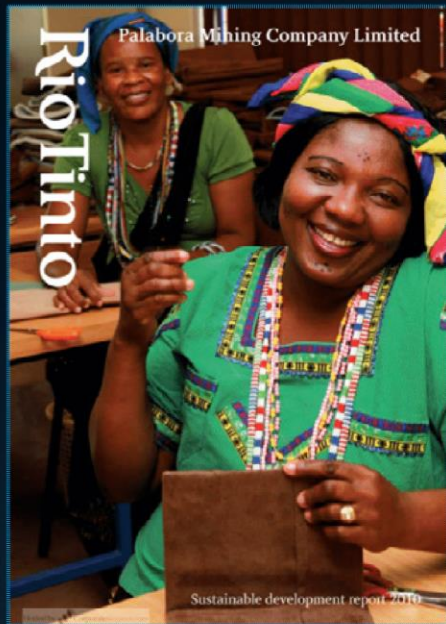
- Transparency Initiative (EITI)
- Corporate Social Responsibility
- Environmental, social and governance reporting
- Social License to Operate (SLO)
- Social Impact (Just Transition)
- Fair Trade

Fund for revitalisation

- National Fund of Environmental Protection and Water Management created in 1989
- Structural Funds

The main deposits of mineral resources in Poland
<http://www.skyscrapercity.com/showthread.php?t=861928>





RESPONSIBLE BUSINESS CONDUCT

OECD DUE DILIGENCE GUIDANCE FOR
 MEANINGFUL STAKEHOLDER ENGAGEMENT
 IN THE EXTRACTIVE SECTOR



KWK Siersza, Trzebinia



Górka quarry – ecological bomb



fot. Elżbieta Pietrzyk-Sokulska



Balaton lake in Trzebinia

IDEA



CURRENT VIEW



fot. Elżbieta Pietrzyk-Sokulska

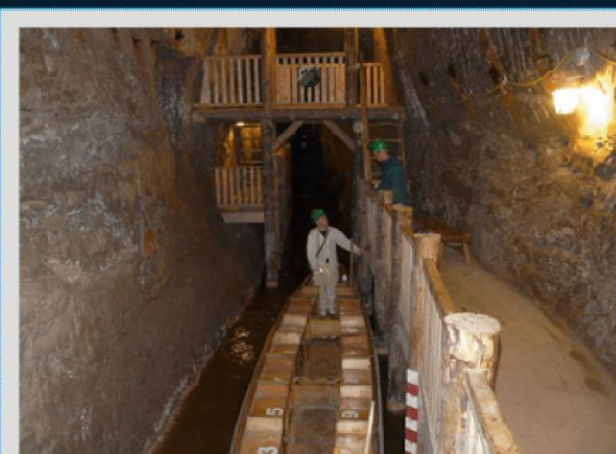
Touristic mining cities

Wieliczka Salt Mine



Kaplica św. Kingi, Kopalnia Soli w Wieliczce / fot. EwelinaSow, CC-BY-SA 3.0

Bochnia Salt Mine



Kopalnia Soli w Bochni / fot. CC-BY-SA 3.0

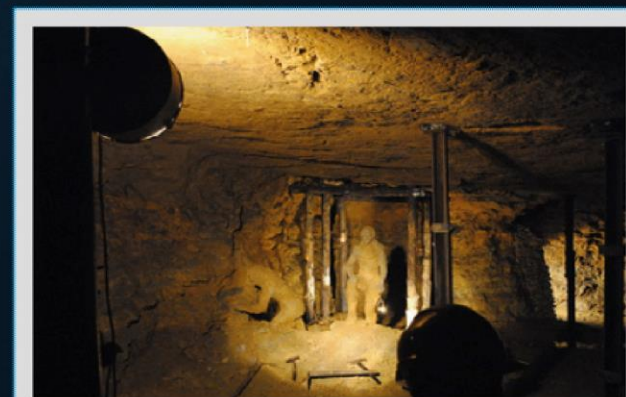
Guido mine Zabrze



Podziemny chodnik w Kopalni Guido / fot. Przymasban, CC-BY-SA 3.0

<https://historia.org.pl/2015/07/27/10-podziemnych-atrakcji-turystycznych-w-polsce-ktore-trzeba-zobaczyc/>

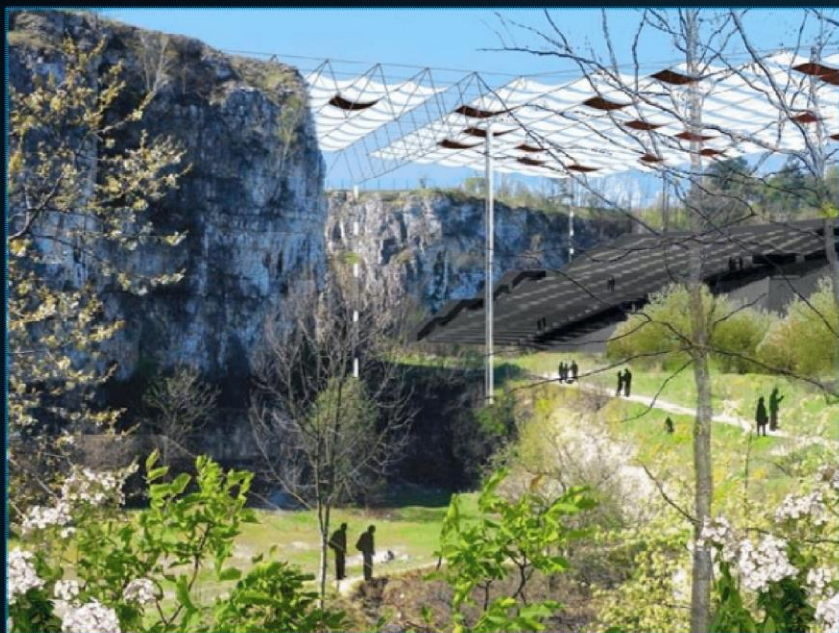
Silver mine
in Tarnowskie Góry



Kopalnia Srebra w Tarnowskich Górach / fot. Athbt, CC-BY-SA 3.0

Zakrzówek in Cracow

IDEA



CURRENT VIEW



fot. Elżbieta Pietrzyk-Sokulska

Kamieńska Mountain

– an artificial hill 386 m high created as an external dump of the Bełchatów Brown Coal Mine.



fot. Zbigniew Kucybała

Author: Zbigniew Kucybała – CC BY-SA 4.0,
<https://commons.wikimedia.org/w/index.php?curid=35227426t>

Julianka quarry



fot. Elżbieta Pietrzyk-Sokulska

Bytom

Golf course Srebrne Stawy in Bytom was created on post mining area of KWK Szombierki – total area 26 ha, total cost – 11,5 mln zł.



<https://www.tvn24.pl/zdjecia/pole-golfowe-na-haldach-gorniczych-w-bytomiu,34062.html>



Kamieniołom Kielnik



projekt PIG

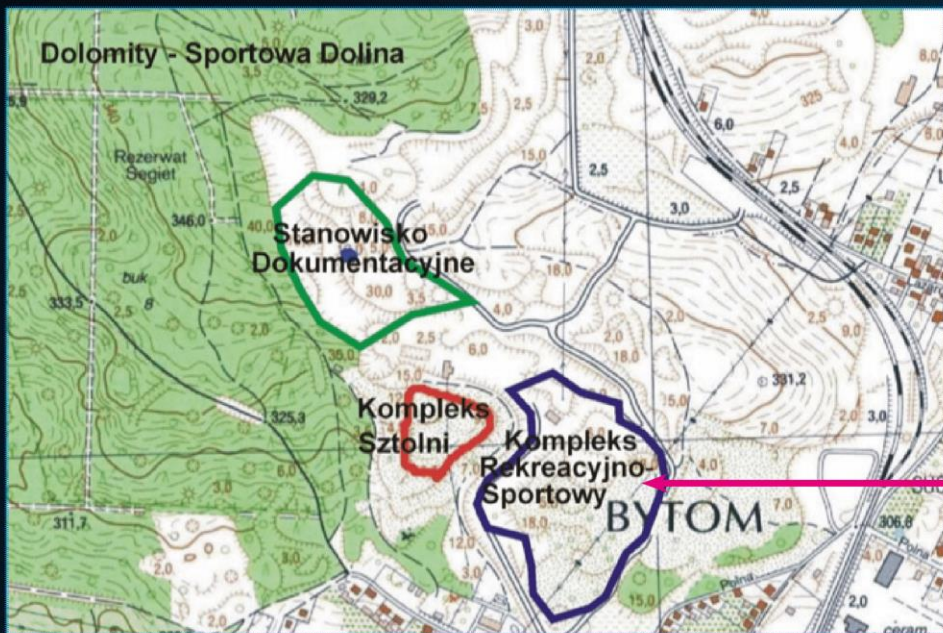
concept.
M. Bogdanowicz



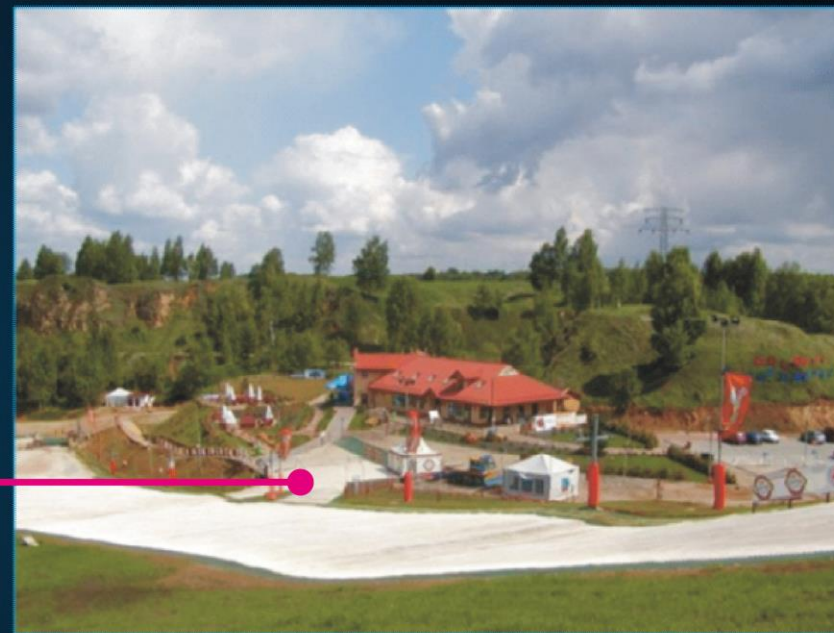
fot. EPS

Quarry Blachówka in Bytom

Dolomite Sport Valley



Recreation



J. Szyłwański, Z. Caputa

Post sulphur mine area in Machów



<https://wios.rzeszow.pl/cms/upload/edit/file/7.pdf>





RES-SKILL PROJECT

- Develop a novel curriculum & tailored training content to facilitate coal workers' reorientation to the RES industry.
- Support VET providers to integrate the RES-SKILL materials into their VET & WBL offerings.
- Improve cooperation between VET providers & businesses to provide opportunities that will enable coal workers to transition to the RES sector.



THANK YOU!

JOANNA KULCZYCKA

kulczycka@meeri.pl