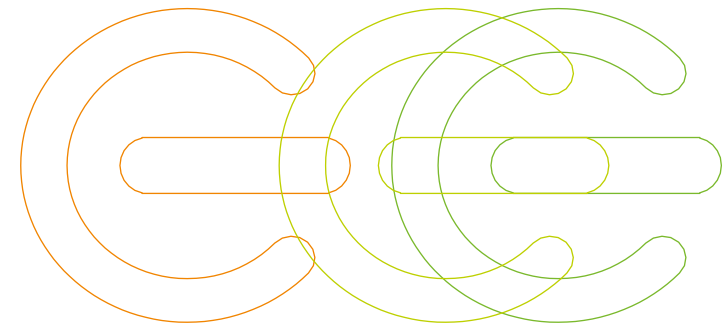


28 September 2017, Dublin

Promoting and Financing Energy Efficiency in Ireland and the United Kingdom

Energy Efficiency drive for SMEs



45 members associations
1,700 regional and local chambers of commerce and industry
20,000,000 businesses
98% of which are small and medium-sized
120,000,000 employees



The Action

stEEEP

Support & Training for an Excellent
Energy Efficiency Performance



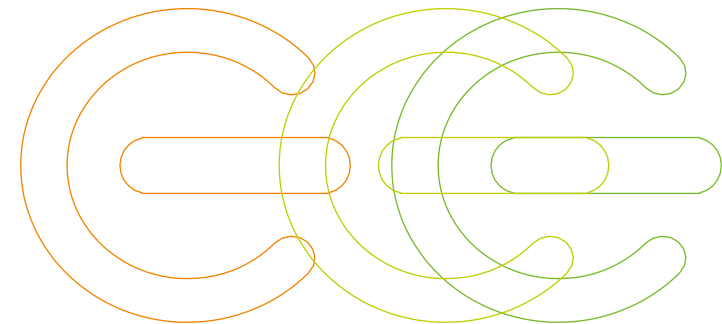
- STEEEP project aimed at providing **cross-sector SMEs** with tailored training and guidance on effective energy management tools and practices targeted towards specific national or regional needs to **reduce their energy consumption (10/15%)**



1 March 2014 – 28 February 2017

14 partners from 11 EU countries

Involvement of 36 regional and local Chambers of Commerce and Industry (CCIs)



Why?

SMEs' Energy Efficiency (EE) potential is still under-developed (10-20%)

- Previous successful project



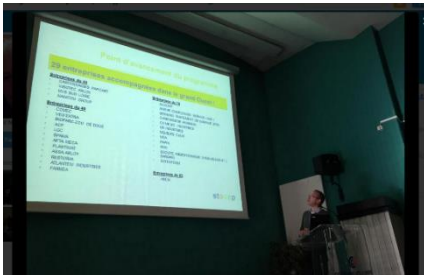
- 75% of CCIs provide energy efficiency services
- Chambers experienced an increase in the demand for energy efficiency services

Main **barriers** restricting SMEs' investments in Energy Efficiency:

- Lack of financial resources
- Lack of information
- Lack of time
- Limited technical knowledge
- Difficulties to access existing financing mechanisms

Activities

- Capacity Building for Chamber of Commerce and Industry (CCIs)
 - A transnational network of 48 regional and local energy advisors
- Support for 600 SMEs
 - Individual coaching: energy site visits & helpdesk support
 - A self-monitoring tool implemented: Eval'STEEEP
 - Multilateral coaching: 274 workshops in 10 countries
- Establish Local Energy Communities
- SMEs energy use analysis



steEEP Eval'STEEEP 1.0
Support & Training for an Excellent Energy Efficiency Performance

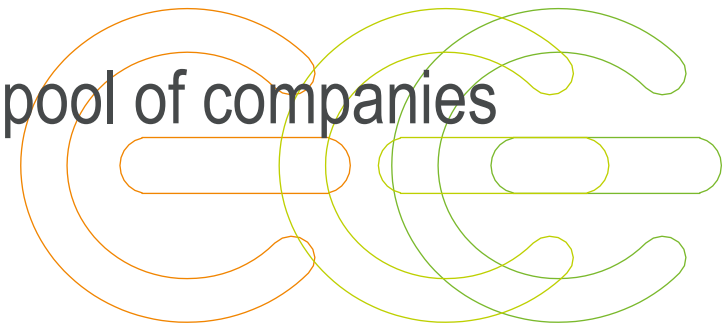
Reference Year (2013 -2014)	2014 - 2015	2015 - 2016	2016 - 2017
Monitor Consumption	Monitor Consumption	Monitor Consumption	Monitor Consumption
EP	EP	EP	EP
Monthly report	Monthly report	Monthly report	Monthly report
Annual report	Annual report	Annual report	Annual report

ANNEXES



SMEs' outreach

- Channels used:
 - Direct contact - CCIs acts as trusted intermediaries
 - Calls for interest
 - Open events on energy efficiency
- SMEs signed a formal commitment
- Each CCI followed and supported a pool of companies



SMEs' profile

Decision criteria to participate in STEEEP:



Cost savings



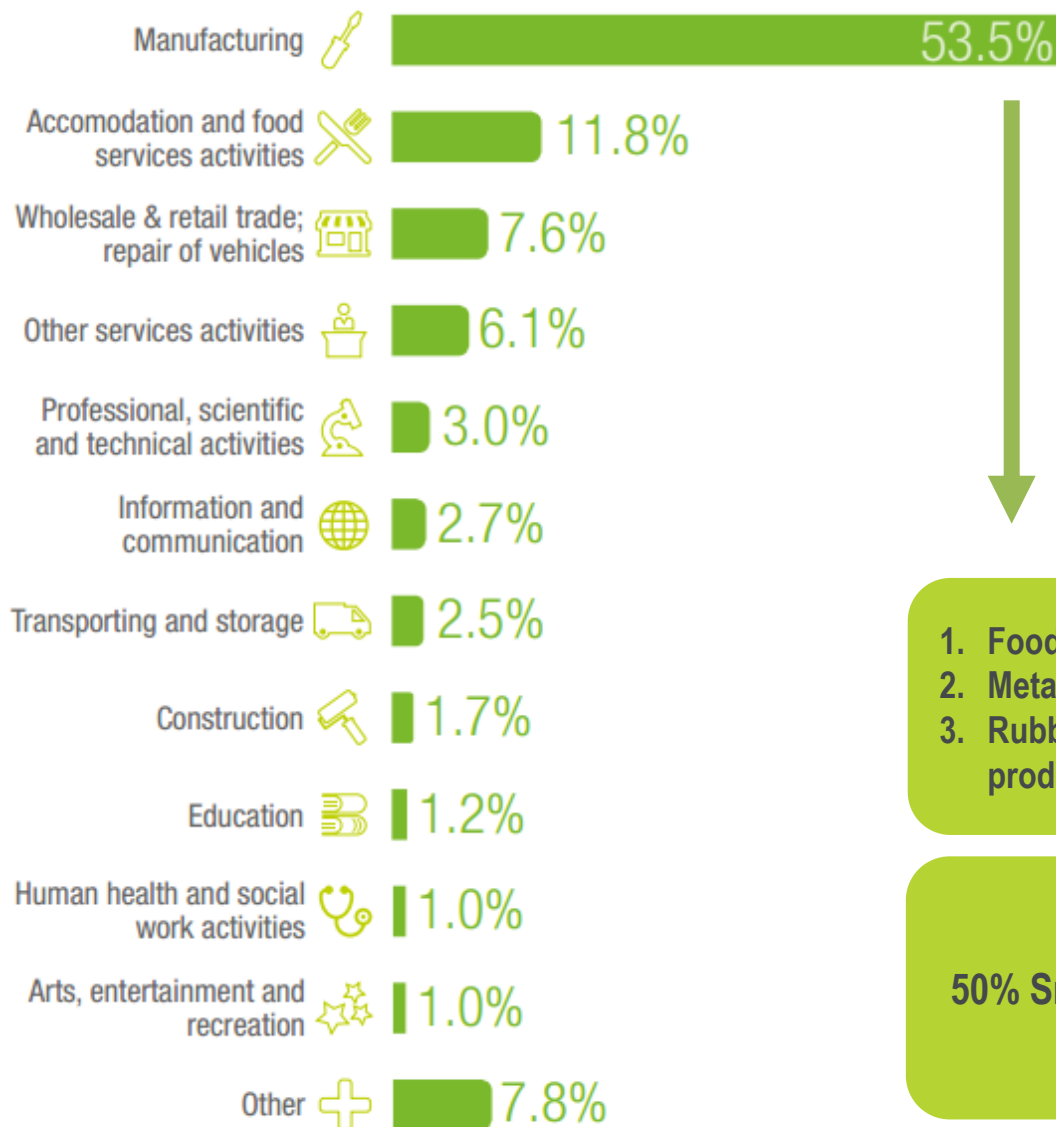
Anticipate changes in legislation



Environmental concerns



Improvement of working place conditions



1. Food products
2. Metal products
3. Rubber and plastic products

50% Small companies

- 91% of SMEs have an Energy Management Plan in place
- Average energy use reduction by 10% in participating SMEs

Top field of implementation:

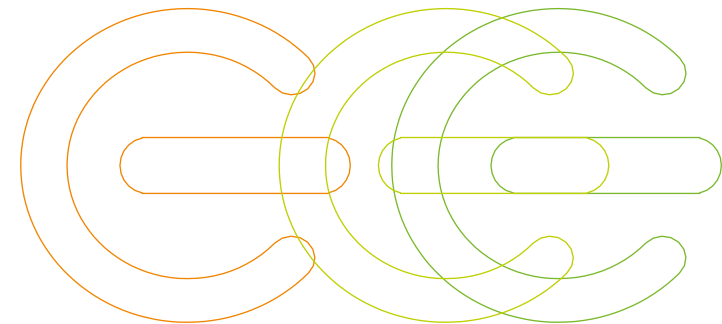
- Energy Management
 - Lighting
 - HVAC
-
- Cumulative investment triggered by the project € 5.000.000*
 - 19% of implemented recommendations required investments
 1. Own resources
 2. National / regional grants subsidies



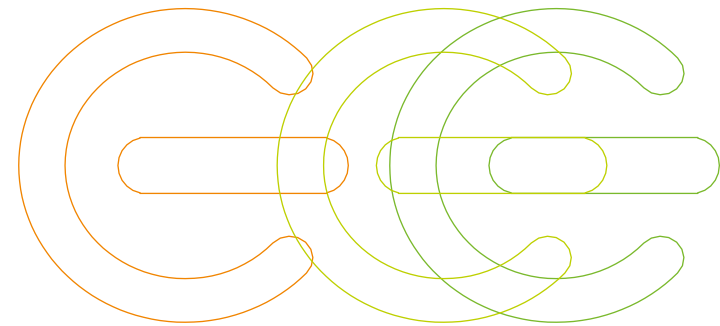
**data from 6 countries

Best practices & success factors (I)

- Development of a strong **awareness** of energy and sustainability issues across the company
- SME recognition of the importance of energy management as a tool for improving business competitiveness,
- SME's **willingness** to expand its activities, as well as to attract a specific market segment/ type of costumers.

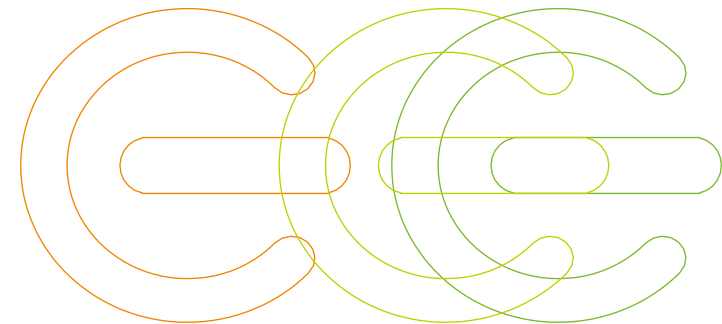


- Direct **involvement** of all staff – both managerial and operational - in the development and deployment of the company energy efficiency policy.
- Lower payback period < 2 years



How to get SMEs investment ready:

- Coaching and seminars
- Guidance: assisting in identifying the right source of funding
- Matchmaking



Partners & Contact



Support & Training for an Excellent
Energy Efficiency Performance

- EUROCHAMBRES aisbl (Belgium)
- Energieinstitut der Wirtschaft GmbH (Austria)
- Wirtschaftskammer Wien (Austria)
- Fédération des Chambres de Commerce belges (Belgium)
- Mtu Eesti Kaubandus-Toostuskoda (Estonia)
- Cámara de Comercio de España (Spain)
- CCI de France (France)
- Hrvatska Gospodarska Komora (Croatia)
- Borsod-Abaúj-Zemplén megyei Kereskedelmi és Iparkamara, (Hungary)
- Győr-Moson-Sopron Megyei Kereskedelmi és Iparkamara (Hungary)
- Unioncamere (Italy)
- Latvijas Tirdzniecības un rūpniecības kamera (Latvia)
- Camera de Comert, Industrie si Agricultura Timis (Romania)
- De Montfort University (United Kingdom)

Contact: EUROCHAMBRES aisbl
Nicoletta Favaretto, Project Officer
Avenue des Arts 19 D B -1000 Brussels
Tel: +32 (0)2 282 0875, Fax: +32 (0) 2 230 00 38
favaretto@eurochambres.eu

