



ROMÂNIA

1918-2018 CELEBRATING TOGETHER

PLATFORM FOR COAL REGIONS IN TRANSITION

Brussels- 12th July 2018

Strategy and action plans by pilot region
Jiu Valley

Ms. Rovana PLUMB

Minister of European Funds

Romania



ROMÂNIA

1918-2018 | SĂRBĂTORIM ÎMPREUNA



The Jiu Valley is a region in southwestern Romania, in Hunedoara county, situated in a valley of the Jiu River between the Retezat Mountains and the Parâng Mountains.

The first evidences of the carboniferous basin of the Jiu Valley are dated since 1782, when charcoal deposits burned for a long time.



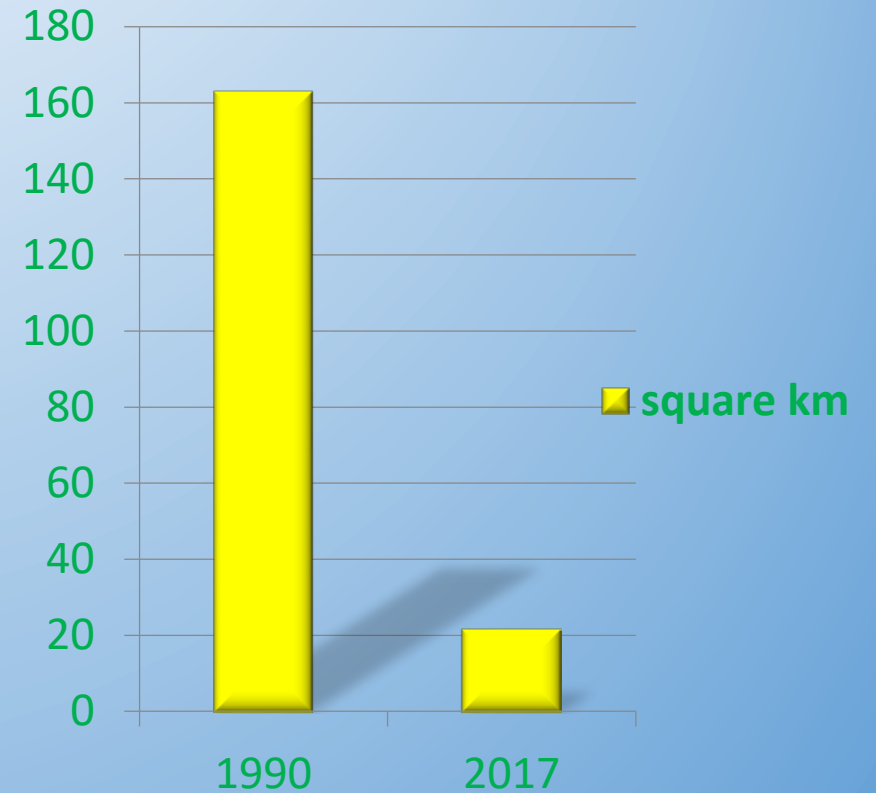
The main activity is coal mining



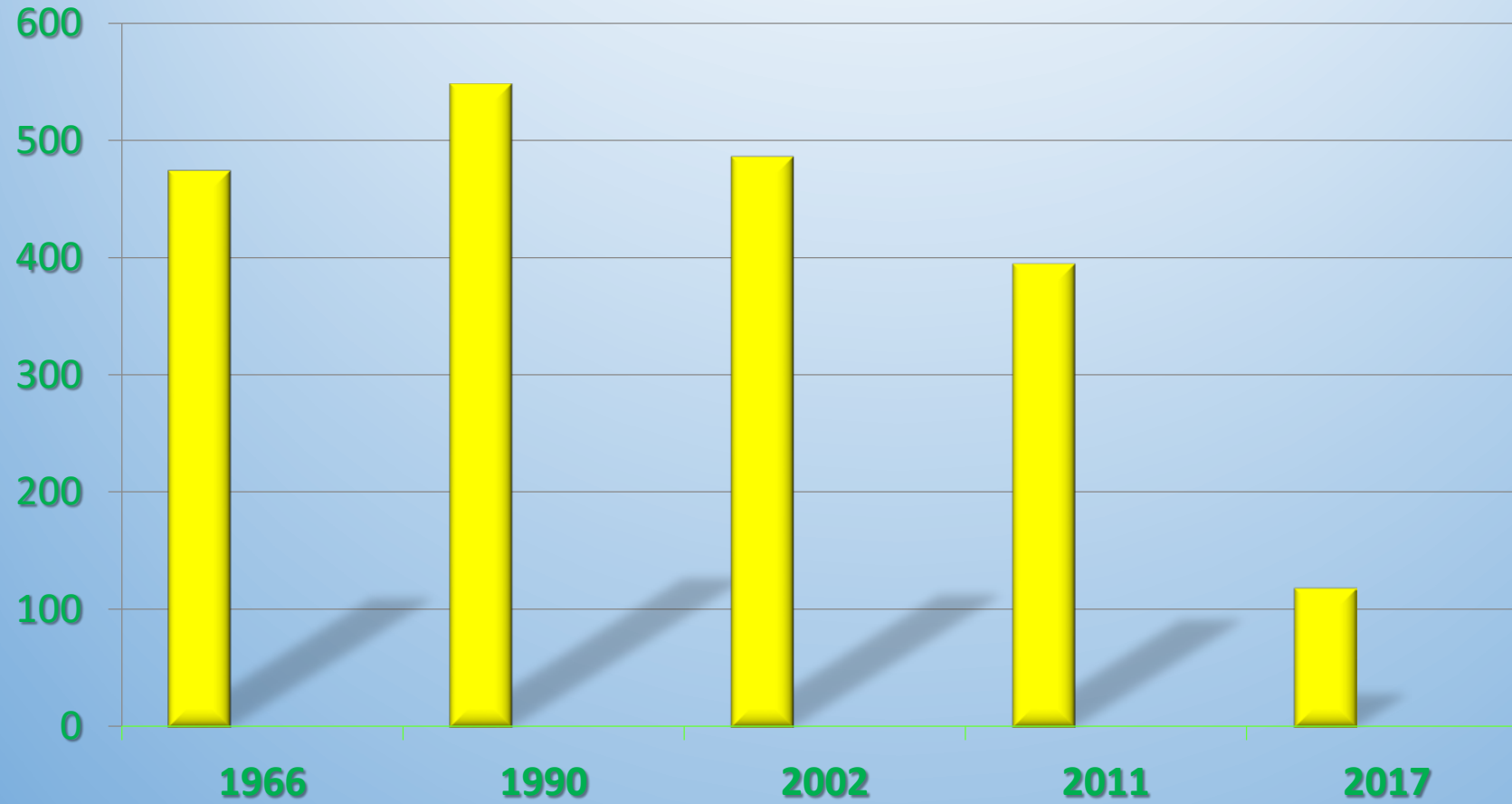
Currently, the Jiu Valley is one of the poorest areas in Romania

Jiu Valley decline of mining activity

- **1990 – 163 km² mining areas**
- **2017 – 22,3 km² mining areas still in operation**



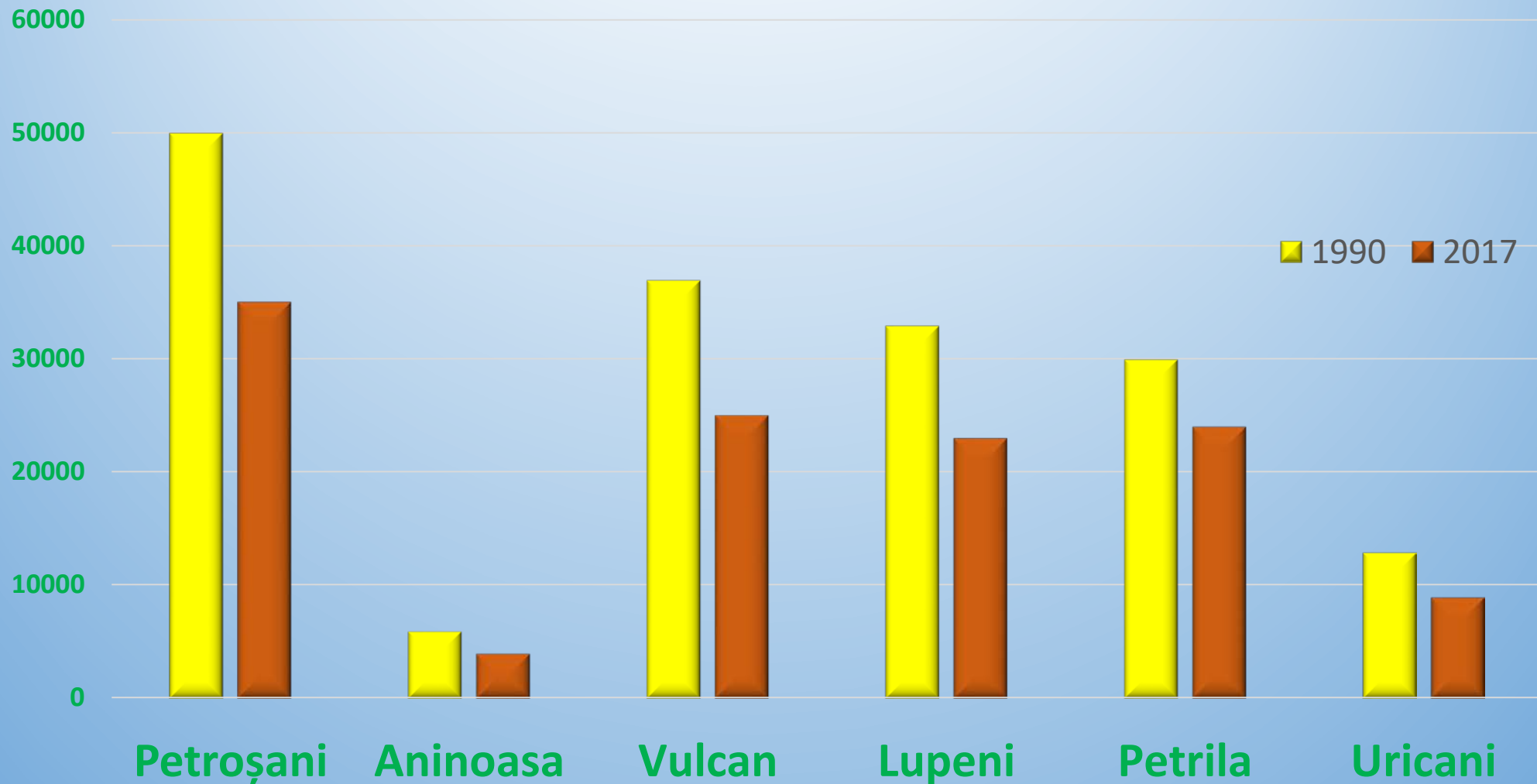
Jiu Valley - Population



Decreasing trend

Number of inhabitants (thousands)

Jiu Valley Main Cities Inhabitants



Jiu Valley - labour force

1990

• 80.000 employees

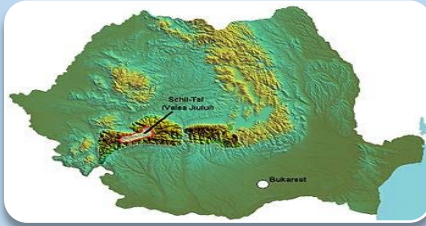
1997

• 37.000 employees

2017

• 3.000 employees

Jiu Valley – Strengths



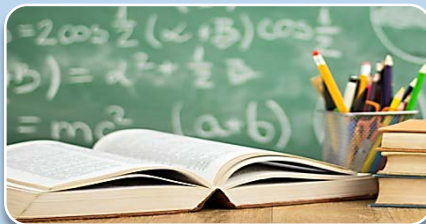
Location

- Proximity to Western Europe
- Relatively easy access of this region to the Danube River
- Mountain area



Tourism opportunities

- Parâng-Petroșani is declared tourist area of national interest
- Ski slopes in Petroșani area



Education

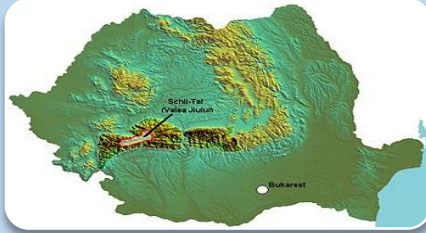
- Technical high schools with a wide educational offer
- University center with tradition, with 3 faculties and over 20 accredited specialties



Environment

- Extensive Hydrographic network, including developed drinking water network
- Protected areas (Eg: Natura 2000)

Jiu Valley –Weaknesses



Location

- **Poor quality connection to the TEN-T corridor**
- **Relatively long distance from the administrative county center DEVA and regional administrative center TIMIȘOARA**



Tourism

- **Poor quality of the accomodation offer**
- **Poor or lack of infrastructure in the area**
- **Relatively small number of tourism companies**



Education

- **High school or college graduates migrates to other countrie`s areas or abroad**
- **Large number of trained professionals without perspective**
- **Lack of dialog between labour market actors**



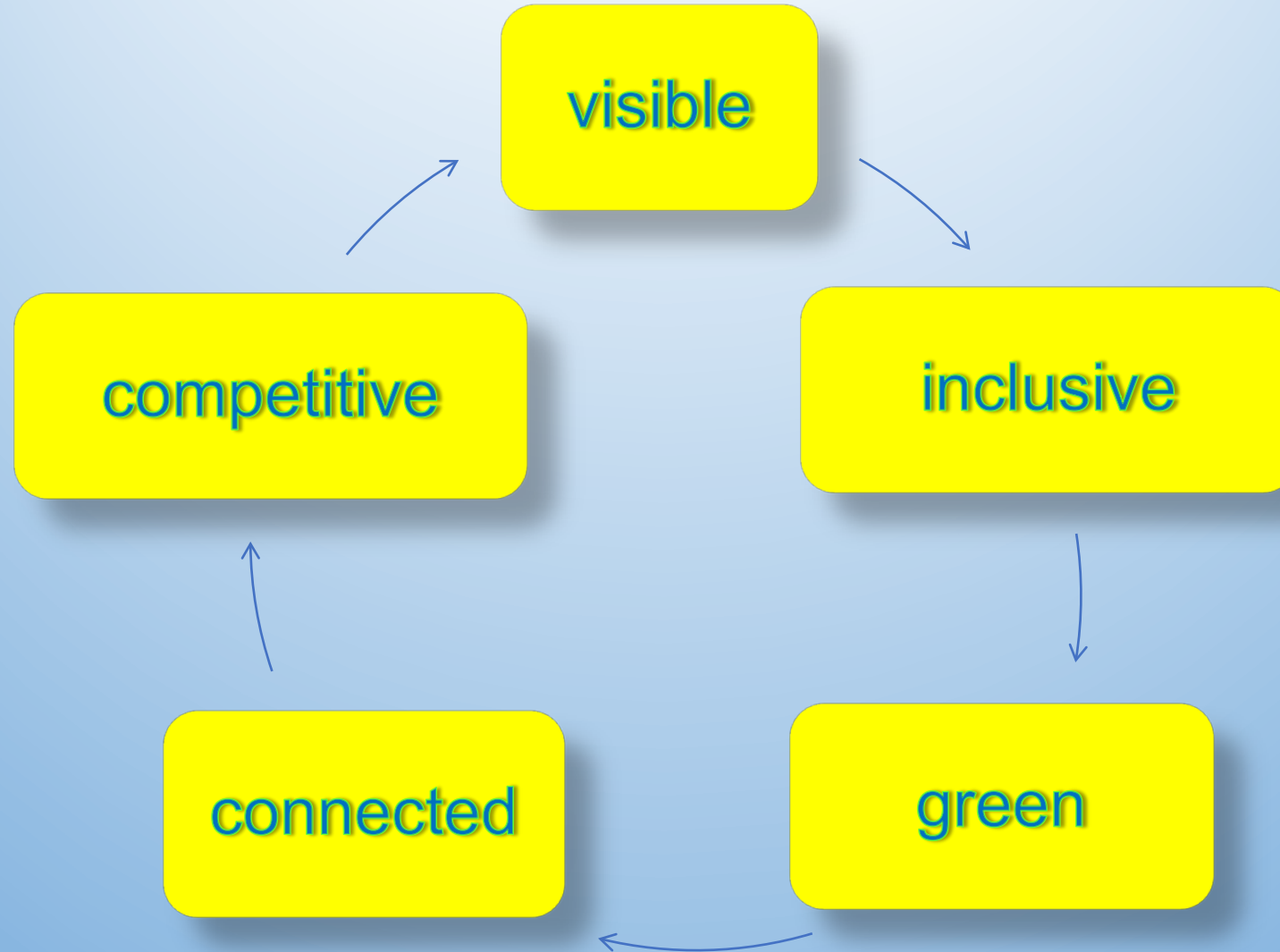
Environment

- **Industrial area affected by pollution**
- **Degradation or damaged ecosystems in protected areas**
- **Infrastructure for non-motorized transport (sidewalks, bike paths) in high degradation**

Challenges for Jiu Valley

- **Permanent transition since the 1990s;**
- **Sustainable development and improved connection with the main transport networks;**
- **Basic infrastructure developing (roads, water, electricity, gas, heating etc.) and ensuring public access;**
- **Improve broadband infrastructure and internet access;**
- **Promoting the tourism potential.**

Jiu Valley – Strategic objectives



What we did

- **We identified the needs and we supported part of these needs from the European Funds**
- **In 2007-2013, there were signed 294 financing contracts with beneficiaries within the framework of the following OPs : Regional, Transport, Environment, Administrative Capacity, Human Resources Development with a total value of 593 Meuro out of which 383 Meuro EU contribution.**

Strategic approach

Goal

- Improving living conditions, creating better economic opportunities and capitalizing on appropriate natural and cultural heritage.

Means

- Cooperation with local actors, stakeholders, civil society representatives and European partners.

How

- Dedicated calls of proposals for the Jiu Valley region.
- Dedicated financial allocations.

Priority projects

Visible

- **Tourism and agro tourism infrastructure**

Competitive

- **Industrial development**
- **Support for business environment**

Connected

- **Transport infrastructure**

Priority projects

Inclusive

- **Local development**
- **Jobs creation**
- **Education**
- **Health**

Green

- **Energy efficiency**
- **Environment protection**





ROMÂNIA

1918-2018 CELEBRATING TOGETHER