

# COALFIELD DEVELOPMENT

Appalachian **COURAGE, CREATIVITY, COMMUNITY**

Jacob Israel Hannah  
Conservation Coordinator  
West Virginia, USA



# THE NEED

West Virginia now has:

- The nation's lowest labor participation rate
- The nation's 2nd lowest higher education rate
- High need for economic diversification
- Sensitive natural areas



# 81%

The total number of fatal drug overdoses that have increased in West Virginia since 2012

# 1.5 million acres (607,028 hectares)

The amount of abandoned coal mine land in West  
Virginia

A decorative pattern at the bottom of the page consisting of numerous vertical bars of varying heights and shades of teal, creating a textured, bar-like effect.

The background is a solid orange color. In the top-left corner, there are three vertical bars of varying heights, each composed of several overlapping rounded rectangular segments. In the bottom-right corner, there are four vertical bars of increasing height from left to right, also composed of overlapping rounded rectangular segments.

# Rebuilding the Appalachian Economy from the Ground Up

# Coalfield Development Addresses:

Environmental



Social



Economic





## This is done through 3 core capacities:

- Incubating social enterprises
- Hiring unemployed people through these enterprises
- Revitalizing dilapidated property as a licensed community developer and general contractor

# Identifying Market Opportunities

- Agriculture
- Construction
- Sustainability
  - Energy



# Coalfield Training Model

**33**

Hours per week:  
On-the-Job  
Training



**6**

Hours per week:  
In the Classroom  
pursuing an  
Associate's  
Degree



GraduationMall

**3**

Hours per week:  
Personal  
Development











150 new jobs, 32 new businesses, over 800 professional certifications issued, 60 new degrees, over 175,000 square feet (16,258 sq m) of space revitalized, and \$13 million in new investment



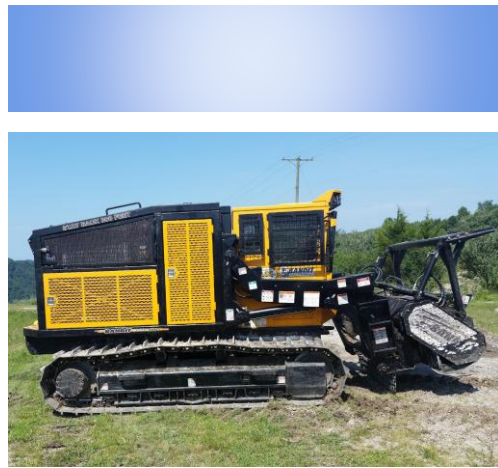


# REFRESH APPALACHIA

- Growing the growers by supporting new and beginning farmers
- Actively developing a regional food hub
- Improving access to local healthy food









# RECLAIM APPALACHIA

- Converts former mine lands into assets
- Remediates abandoned and dilapidated properties
- Improves environmental remediation practices and policies



# REVITALIZE APPALACHIA

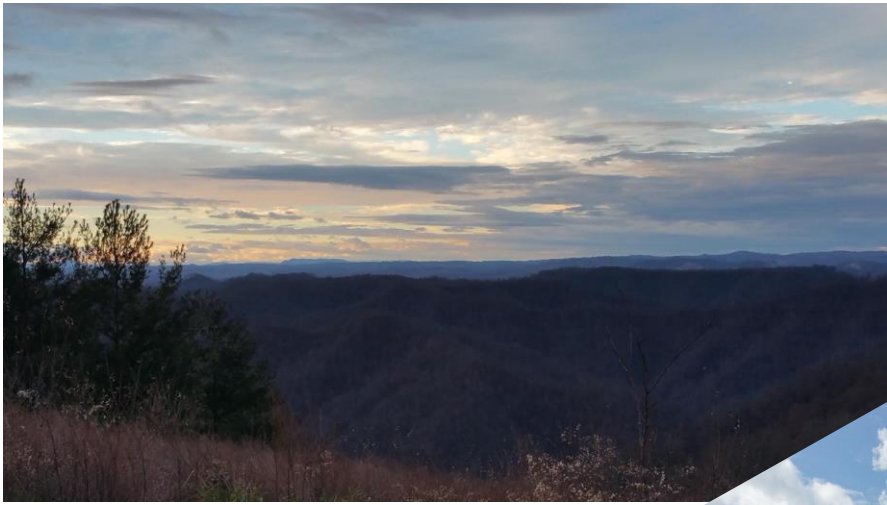
- Execute community-based construction projects
- Push local building markets to be more sustainable through new techniques, design and technologies
- Encourage historic preservation













# COALFIELD DEVELOPMENT

Appalachian COURAGE, CREATIVITY, COMMUNITY



# REWIRE APPALACHIA

- Championing/advocating solar opportunities throughout WV
- Execute community-based solar projects
- Advocate for improved electrical, IT and broadband systems



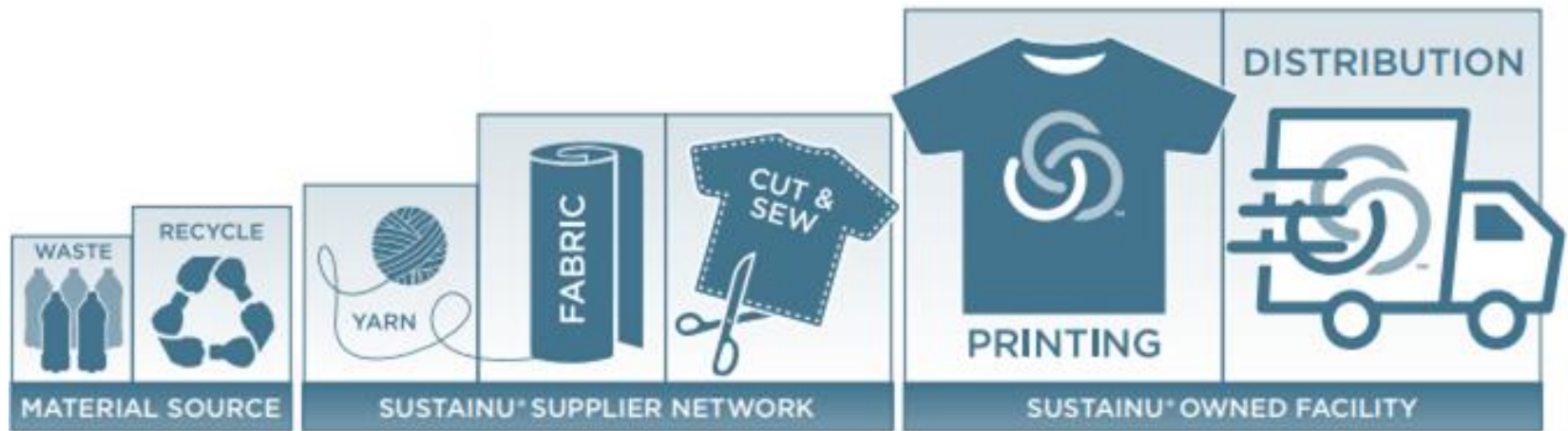






# SustainU

## Our latest Social Enterprise



- Utilizes recycled and chipped plastic
- Eco-friendly inks that are 100% non-toxic
- Clothing requires zero virgin growth and minimal transportation



## Catalytic Transformation for Places...



## True Empowerment Opportunities for People ...









Potential

Power

Purpose



# Thank You

[jhannah@coalfield-development.org](mailto:jhannah@coalfield-development.org)

**COALFIELD  
DEVELOPMENT**  
Appalachian **COURAGE, CREATIVITY, COMMUNITY**