

The European Commission's science and knowledge service

Joint Research Centre



REM data base developments 2016-2018

**De Cort M., Hernández-Ceballos M.A., Nweke E.,
Sangiorgi M., Tognoli P. & Vanzo S.**

European Commission, Joint Research Centre, Directorate for Nuclear Safety & Security, Ispra, Italy

Outline

1. REMdb data and system administration
2. REM Data Submission Tool training courses
3. Annual Monitoring Reports
4. Summary of the Euratom Art 36 data submissions

REMdb Data and System administration

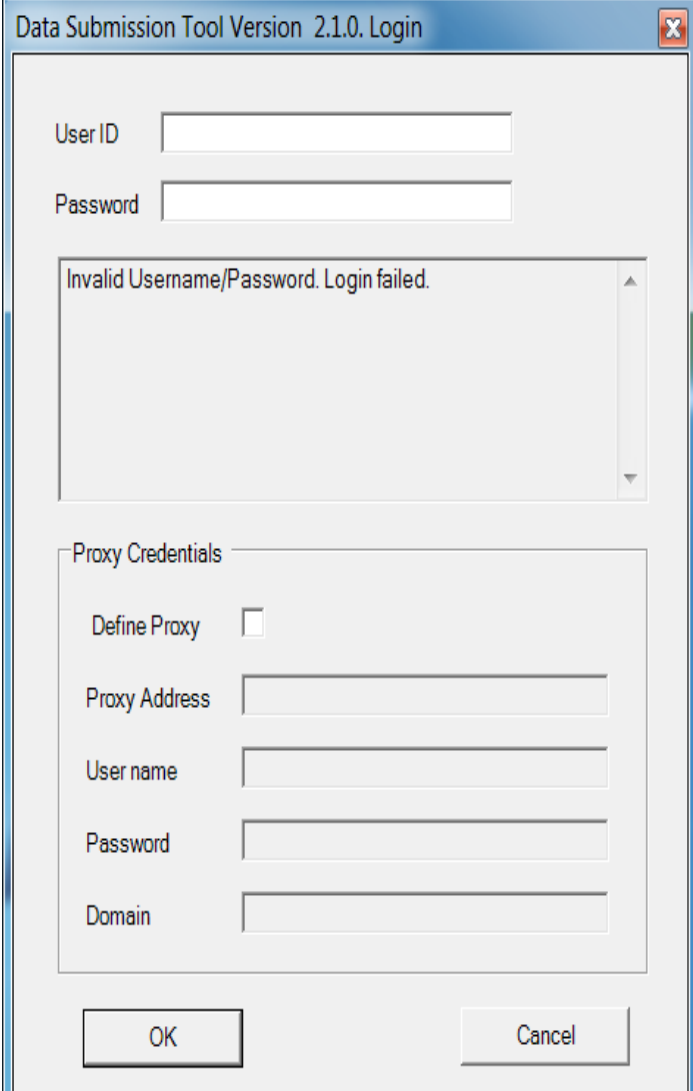
- Application Development & Maintenance
- Application Support
- Data Maintenance & Analysis

REMdb Data and System administration

Upgrading Data Submission Tool from version 2.0 to 2.1

Some of the major changes in this version include:

- Handling login error
 - Error was not handled at login
 - The user had access to some data
 - The message was ambiguous and confusing
- Solution
 - User is denied access
 - A clear error message is issued



Data Submission Tool Version 2.1.0. Login

User ID

Password

Invalid Username/Password. Login failed.

Proxy Credentials

Define Proxy

Proxy Address

User name

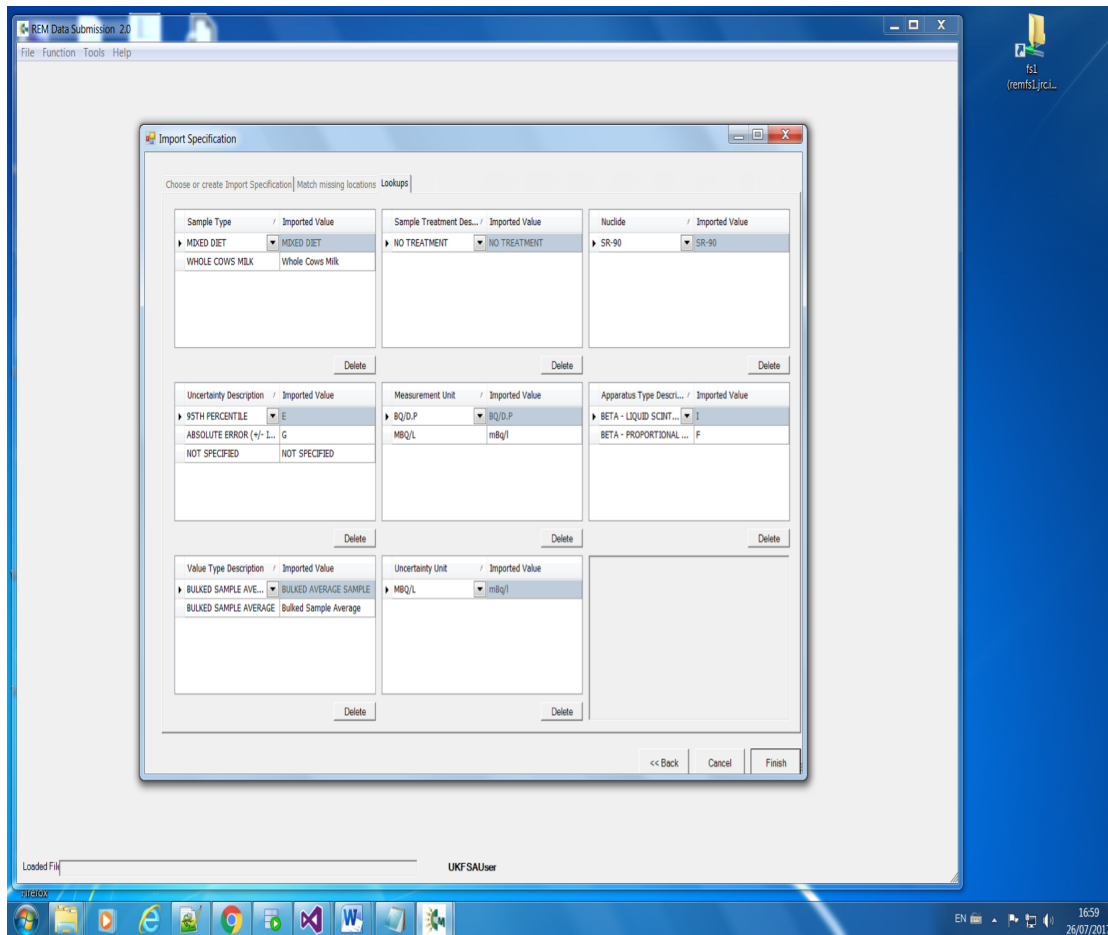
Password

Domain

OK Cancel

REMdb Data and System administration

- The Import Specification Wizard has been extended to include Uncertainty Units



REMdb Data and System administration

Member State users now have the possibility of modifying their contact information while maintaining read-only privilege on information related to other users.

The screenshot displays the 'REM Data Submission 2.0' application window. The main interface is divided into several sections:

- Choose User and Institution:** A list of users and institutions from various countries, including Austria, Belgium, Czech Republic, Denmark, Estonia, France, Germany, Greece, Hungary, Ireland, Italy, Lithuania, Luxembourg, Macedonia, Malta, Netherlands, Norway, Poland, Portugal, Romania, Serbia, Slovakia, Slovenia, Spain, Sweden, Switzerland, Turkey, and the UK.
- Content Table:** A table with columns: Content, Title, Receipt Date, ReferenceCode, Institute, and Final. It lists several entries for Austria (AUSTRIA) with dates ranging from 2004 to 2008.
- Contact Form:** A form for editing contact information for 'AustriaUser'. Fields include Country Code (FR), Institution (57), Last Name (Simon Comu), First Name (Marie), Affiliation (Institut de radioprotection et de sûreté nucléaire), and E-Mail (marie.simon-comu@irsn.fr). There is an 'Edit' button.
- Buttons:** 'Open Submission from Database', 'Import TAB Delimited File', 'Open Locally Saved Submission', 'Create New Submission', and 'Delete Submission'.
- Error Dialog:** A modal dialog box titled 'Insufficient Privileges' with a red 'X' icon. The message reads: 'You cannot modify data belonging to other institutions. Please choose your institution!' with an 'OK' button.

The application is running on a Windows desktop environment, with the taskbar showing the date and time as 16:01 on 26/07/2017.

REMdb Data and System administration

Migration of DST from VS 13 to VS 15 and from Oracle 10g to Oracle 12c

Why Migrate

- To keep up with technology trends;
- To take advantage of latest improvements.

Challenges

- Libraries and packages need to be replaced (manually);
- Code fragments need to be reviewed and adapted;
- The entire software needs to be recompiled and tested.

This is an an-going iterative process until the system has become stable

REMdb Data and System administration

Application Support

What ?

- Respond to user requests; provide technical support
- Track, analyse, troubleshoot and resolve issues raised by users;

Why?

- Diverse user community – different backgrounds and different levels of computer literacy;
- Dynamic user group – frequent role changes: People move from data submission to other roles and new people come in to handle data submission
- Not all users find time to attend training courses

REMdb Data and System administration

Data Maintenance & Analysis


These activities concern cleaning, validating and ensuring the long-term quality of data in REM database.

Catchments

The problem in this case is duplication.

- In some cases the same physical catchment was named slightly differently and each name was assigned a different code
- In other cases, the same catchment name was repeated and each repetition had a different code (ID).

The software identifies catchments by their identifiers (IDs). Results are bound to be inaccurate, inconsistent and incorrect.



149	ETANG DE ST QUENTIN
155	ETANG GOUILLET
151	ETANG DE ST QUENTIN
153	ETANG DE ST. QUINTIN
152	ETANG DE ST-QUENTIN
163	ETANG ST-QUENTIN
158	ETANG RECEPTEUR
159	ETANG RECEPTEUR
150	ETANG DE SACLAY
162	ETANG SACLAY
167	ETANGS DE SACLAY
169	EXE
465	RIVER EXE
192	GRAN CANAL D'ALSACE
193	GRAND CANAL D'ALSACE
228	IONIAN SEA
229	IONIC SEA
279	LAKE IJSSEL
280	LAKE IJSSEL
301	LIGURIA
302	LIGURIAN SEA
308	LMSt4-MLVA-Wiesbaden
309	LMSt4-MLVA-Wiesbaden
331	MANZANARES
332	MANZARANES
333	MAR MEDITERRANEO
338	MEDITERRANEAN SEA
339	MEDITERRANEE
360	NAPPE PHERATIQUE
361	NAPPE PHREATIQUE
376	NORTH
377	NORTH SEA
409	PO
410	PO RIVER

REMdb Data and System administration

NUTS Codes

Migrating the custom (legacy) codes in REM database to standard EUROSTAT NUTS cods.

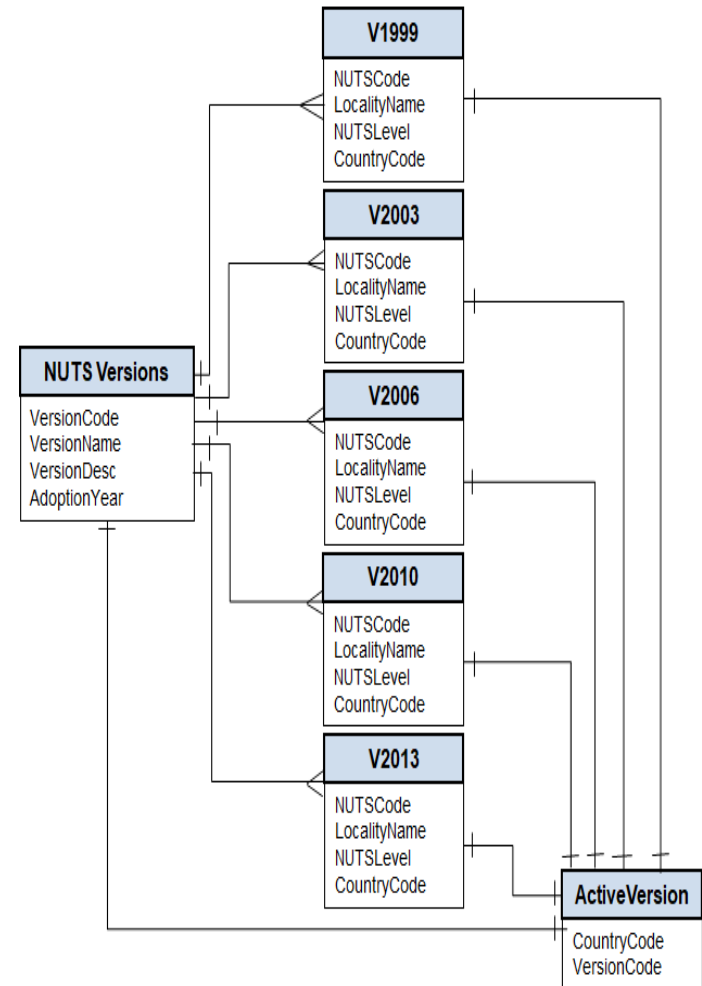
Macro activities:

- Acquisition of new codes.
- Mapping and verification with stakeholders
- Modifying DB Structure
- Monitoring Reports
- Updating historical data

REMdb Data and System administration

Project and Task Tracking					
Project: DST & Monitoring Reports: NUTS Code Upgrade					
Date:					
Author:					
Phases and Tasks					
Data Submission					
Task	Resource	Start	End	Days	Status
29/09/2017					
Creating Database Objects - Tables and indexes	PMN			5	In progress
Design Logical Model					Complete
Create Physical Entities					Complete
Data Acquisition (download from Eurostat)					Complete
Populate Objects					In progress
Creating Database Objects - Procedures and	PMN			5	Complete
identifying and modifying other processes					Complete
Creating additional procedures & functions					Complete
Service Layer	PMN			9	Complete
Adding in-memory data structures (dashboards)					Complete
Updating existing web services					Complete
Creating new services					Complete
Client Layer (DST)	PMN			9	In progress
Review and rework user interface components					In progress
Review and rework presentation logic components					In progress
Review and adapt web service invocation modules					In progress
Development					
Technical design					Not started
DB Development					Not started
API Development					Not started
UI Client					Not started
Testing					Not started
Dev Complete					Not started
Operations					
Hardware Config					Not started
System Testing					Not started
Launch					

NUTS Code – ER Diagram



State of the art:

- Mapping has been completed for practically all member states.
- Data for Belgium has been verified and validated because it was intended to get Belgium involved in the beta test.
- All required database objects have been created.

REM Data Submission Tool training courses

Data are submitted by the Member States directly into REMdb using a tool developed and maintained by JRC: **REMdb Submission Tool**.

JRC organizes and hosts on a yearly basis a training course on the Data Submission tool, explaining its usage and giving practical examples.

Each participants is given a PC loaded with a copy of the Submission Tool.

Each participants is asked to bring a sample copy of their own datasets in order to practice with.

Feedback provided at the end of the training poses the basis for the next one.

REM Data Submission Tool training courses

The objectives are that, after attending the course, participants should:

- have an overview of the REM activities and routine monitoring of environmental radioactivity levels in Europe;
- know how to submit data through the REM DST;
- know how to check compliance and quality of their data using the REM DST;
- know how their data are being compiled, collated and checked by the JRC;
- know how their data are being reported to the European Community through a series of annual monitoring reports on environmental radioactivity levels published by the EC.

REM Data Submission Tool training courses

REMdb Submission Tool

What it is used for

Submitting environmental radioactivity data to the REM Database.

Who are the users

Researchers/laboratories of EU and non-EU Member States who submit the data.
The tool allows viewing, updating, and extensively searching data.

How the data are used

Compilations of the information received from the Member States are published by the Commission as a series of annual monitoring reports and available for on-line browsing.

REM Data Submission Tool training courses

13-14 December **2016**

9 participants from 7 countries

- REMdb submission tool v2.0

26-27 September **2017**

8 participants from BG, ES, GR, IE, LT, PL & RO

- REMdb submission tool v2.1

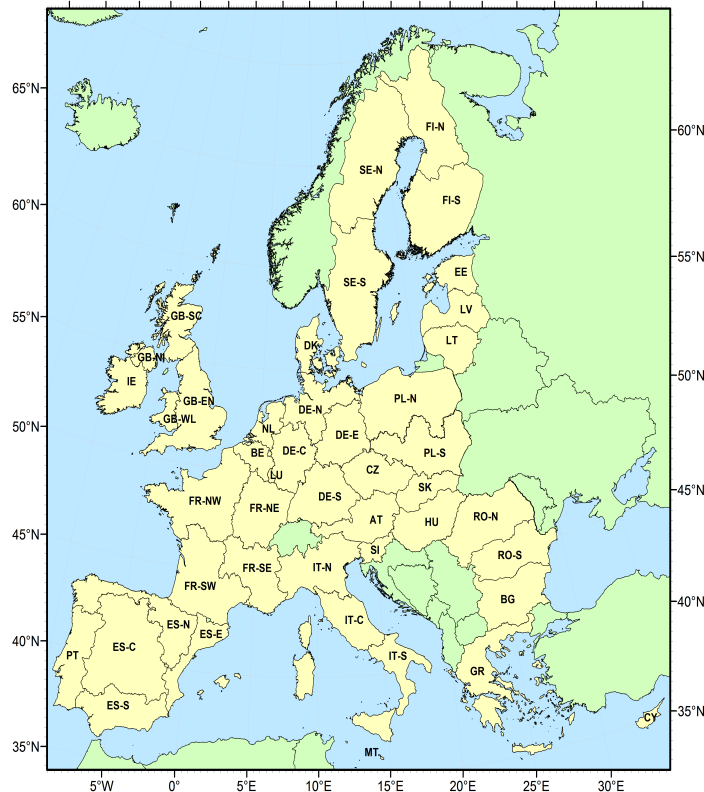
13-14 November **2018**

8 participants from 8 countries

- REMdb submission tool v2.1
- REMdb Webcheck

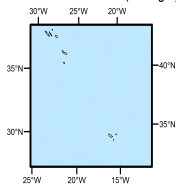


Annual Monitoring Report 2007-2011

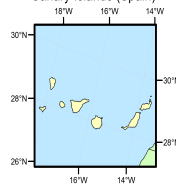


- BG and RO first included;
- Covering 5 years to catch up with delay;
- Same structure as for previous reports;

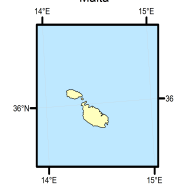
Azores and Madeira (Portugal)



Canary Islands (Spain)



Malta



Annual Monitoring Reports

- Textual part
- Dense network maps & tables
- Sparse network graphs
- Appendices

Sampling media	Radionuclide categories	
	Dense network	Sparse network
airborne particulates	gross β ^{137}Cs	^7Be ^{137}Cs
surface water	residual β ^{137}Cs	^{137}Cs
drinking water	^3H ^{90}Sr ^{137}Cs	^3H ^{90}Sr ^{137}Cs
milk	^{90}Sr ^{137}Cs	^{90}Sr ^{137}Cs
mixed diet	^{90}Sr ^{137}Cs	^{90}Sr ^{137}Cs

Annual Monitoring Reports: dense network ex.

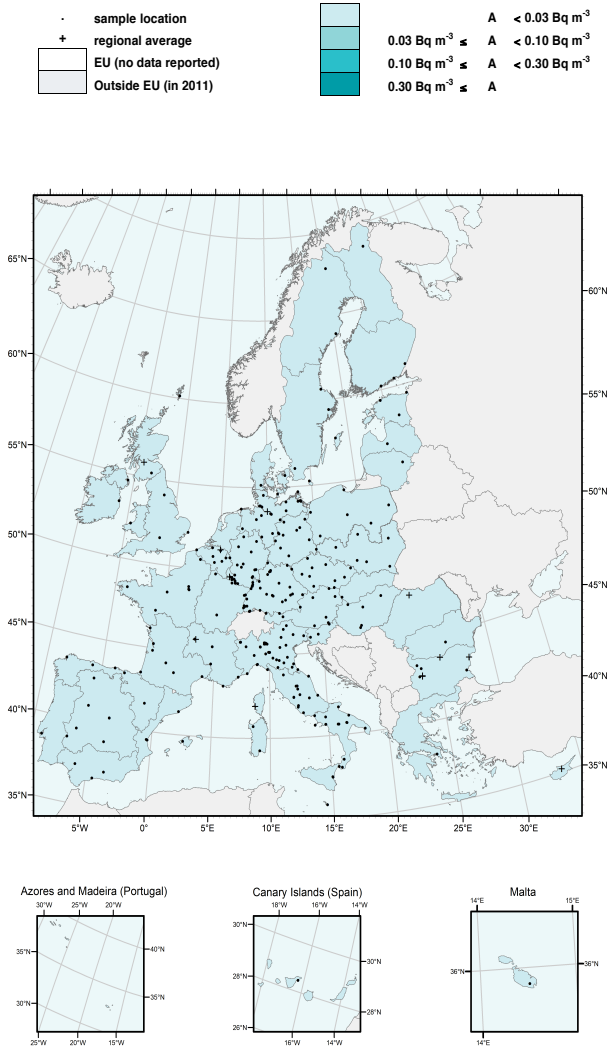


Fig. A10 Sampling locations and geographical averages by year for ^{137}Cs in airborne particulates, 2011

Table A10: Geographical and time averages

YEAR : 2011
 SAMPLE TYPE : airborne particulates (Bq m^{-3})
 NUCLIDE CATEGORY : caesium-137 (^{137}Cs)

Country	N	L	1 st quarter	2 nd quarter	3 rd quarter	4 th quarter	Annual average	Monthly max	M
AT	543	10	<RL	<RL	<RL	<RL	<RL	<RL	
BE	96	8	<RL	<RL	<RL	<RL	<RL	<RL	
BG	143	8	<RL	<RL	<RL	<RL	<RL	<RL	
CY	11	1	<RL	<RL	<RL	<RL	<RL	<RL	
CZ	677	10	<RL	<RL	<RL	<RL	<RL	<RL	
DE - N	4207	24	<RL	<RL	<RL	<RL	<RL	<RL	
DE - C	3849	22	<RL	<RL	<RL	<RL	<RL	<RL	
DE - S	4693	32	<RL	<RL	<RL	<RL	<RL	<RL	
DE - E	2859	11	<RL	<RL	<RL	<RL	<RL	<RL	
DE	15608	89	<RL	<RL	<RL	<RL	<RL	<RL	
DK	117	3	<RL	<RL	<RL	<RL	<RL	<RL	
EE	161	3	<RL	<RL	<RL	<RL	<RL	<RL	
ES - N	110	5	<RL	<RL	<RL	<RL	<RL	<RL	
ES - C	173	7	<RL	<RL	<RL	<RL	<RL	<RL	
ES - S	145	4	<RL	<RL	<RL	<RL	<RL	<RL	
ES - E	96	4	<RL	<RL	<RL	<RL	<RL	<RL	
ES	524	20	<RL	<RL	<RL	<RL	<RL	<RL	
FI - N	57	1	<RL	<RL	<RL	<RL	<RL	<RL	
FI - S	362	3	<RL	<RL	<RL	<RL	<RL	<RL	
FI	419	4	<RL	<RL	<RL	<RL	<RL	<RL	
FR - NW	488	9	<RL	<RL	<RL	<RL	<RL	<RL	
FR - NE	119	3	<RL	<RL	<RL	<RL	<RL	<RL	
FR - SW	214	6	<RL	<RL	<RL	<RL	<RL	<RL	
FR - SE	295	7	<RL	<RL	<RL	<RL	<RL	<RL	
FR	1116	25	<RL	<RL	<RL	<RL	<RL	<RL	
GB - EN	10	3	<RL	<RL	<RL	<RL	<RL	<RL	
GB - WL	4	1	<RL	<RL	<RL	<RL	<RL	<RL	
GB - SC	17	3	<RL	<RL	<RL	<RL	<RL	<RL	
GB - NI	4	1	<RL	<RL	<RL	<RL	<RL	<RL	
GB	35	8	<RL	<RL	<RL	<RL	<RL	<RL	
GR	10	1	<RL	<RL	<RL	<RL	<RL	<RL	
HU	237	5	<RL	<RL	<RL	<RL	<RL	<RL	
IE	26	1	<RL	<RL	<RL	<RL	<RL	<RL	
IT - N	1353	34	<RL	<RL	<RL	<RL	<RL	<RL	
IT - C	783	9	<RL	<RL	<RL	<RL	<RL	<RL	
IT - S	467	14	<RL	<RL	<RL	<RL	<RL	<RL	
IT	2603	57	<RL	<RL	<RL	<RL	<RL	<RL	
LT	60	1	<RL	<RL	<RL	<RL	<RL	<RL	
LU	111	2	<RL	<RL	<RL	<RL	<RL	<RL	
LV	3	1	<RL	<RL	<RL	<RL	<RL	<RL	
MT	40	1	<RL	<RL	<RL	<RL	<RL	<RL	
NL	52	1	<RL	<RL	<RL	<RL	<RL	<RL	
PL - N	6	6				<RL	<RL	<RL	
PL - S	6	6				<RL	<RL	<RL	
PL	12	12				<RL	<RL	<RL	
PT	59	1	<RL	<RL	<RL	<RL	<RL	<RL	
RO - N	12	1	<RL	<RL	<RL	<RL	<RL	<RL	
RO - S	4	1	<RL	<RL	<RL	<RL	<RL	<RL	
RO	16	2	<RL	<RL	<RL	<RL	<RL	<RL	
SE - N	143	2	<RL	<RL	<RL	<RL	<RL	<RL	
SE - S	291	4	<RL	<RL	<RL	<RL	<RL	<RL	
SE	434	6	<RL	<RL	<RL	<RL	<RL	<RL	
SI	37	3	<RL	<RL	<RL	<RL	<RL	<RL	
SK	24	1	<RL	<RL	<RL	<RL	<RL	<RL	

RL : reporting level for ^{137}Cs in air, i.e. $3.0 \text{ E-02 Bq m}^{-3}$ (see Appendix B)

N : number of measurements considered in calculating the annual concentration.
 L : number of sampling locations considered in calculating the annual concentration.
 Monthly max : maximum monthly average in the year.
 M : month during which the maximum occurred.

Annual Monitoring Reports: sparse network ex.

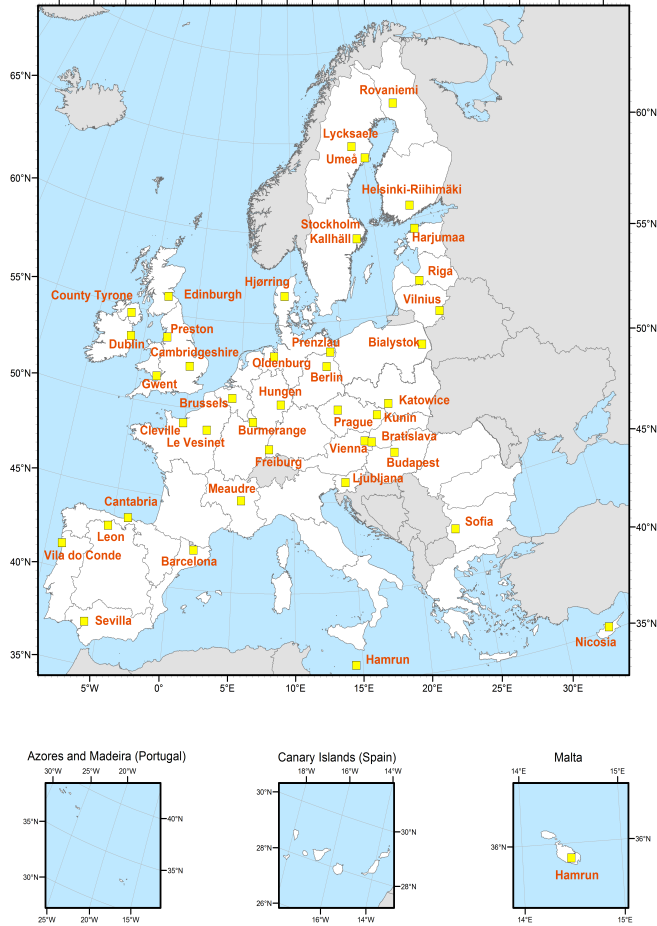


Fig. M11
Sampling locations for ^{90}Sr and ^{137}Cs in milk considered in Figures M12 – M42

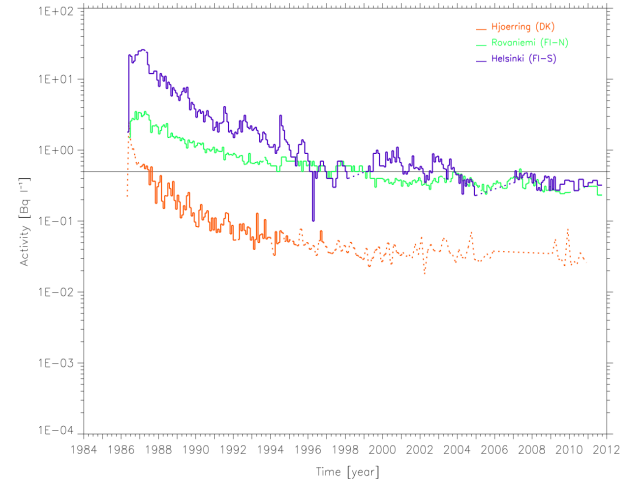


Fig. M26
Activity trends for ^{137}Cs in milk (Hjørring, Rovaniemi and Helsinki)

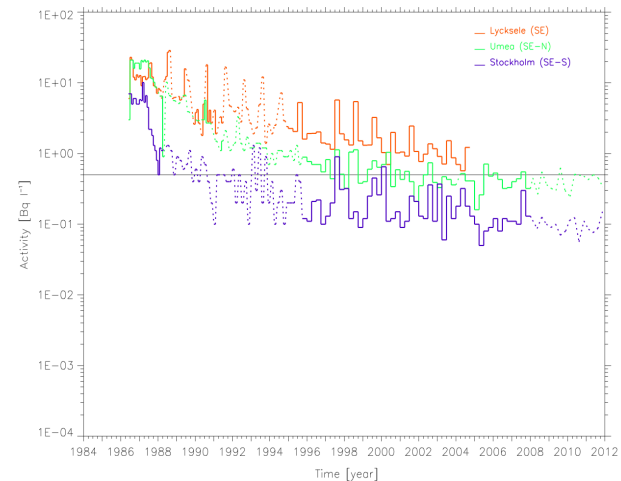


Fig. M27
Activity trends for ^{137}Cs in milk (Lycksele, Umeå and Stockholm)

Annual Monitoring Reports: Next

- More automated report production developed:
 - MR 2012-2014 (incl. Croatia)
 - MR 2015-2016
- Review of layout of future reports:
 - content (sample type/nuclides, networks)
 - Data representation

Summary of the Euratom Art 36 data transmissions

DATA DELIVERED FOR 2015 (2018-09-17)

COUNTRY	AIRBORNE PARTICULATES		MILK (COW, FRESH)		DRINKING WATER			MIXED DIET		SURFACE WATER	
	CS-137	T-BETA	CS-137	SR-90	CS-137	H-3	SR-90	CS-137	SR-90	CS-137	R-BETA
AT	available	not available	available	available	available	available	available	available	not eligible	available	available
BE	available	available	available	available	not available	available	not available	available	available	available	available
BG	available	available	not available	not available	available	not available	available	available	not available	available	not available
CY	available	available	available	available	available	available	available	available	available	available	available
CZ	available	not available	available	available	available	available	available	available	available	available	available
DE	available	available	available	available	available	available	available	available	available	available	available
DK	available	not available	available	available	available	available	available	available	available	available	available
EE	available	not available	available	available	available	available	available	available	available	available	available
ES	available	available	available	available	available	available	available	available	available	available	available
FI	available	not available	available	not eligible	available	available	available	available	available	available	not available
FR	available	not available	available	available	available	available	available	not available	not available	available	available
GR	available	available	available	available	not available	available	available	available	available	not available	available
HR	available	not available	available	available	available	available	available	available	available	available	available
HU	available	available	available	available	available	available	available	available	available	available	available
IE	available	available	available	available	not available	available	not available	available	not available	available	available
IT	available	available	available	available	available	available	available	available	not eligible	available	available
LT	available	not available	available	available	not available	available	not available	available	available	available	not available
LU	available	available	available	available	available	available	available	available	not available	available	available
LV	not available	not available	available	not eligible	available	available	available	available	available	available	available
MT	available	available	available	available	available	available	available	available	available	available	available
NL	available	available	available	available	not available	available	available	available	available	not available	available
PL	not available	not available	not eligible	not available	available	available	available	not available	not available	available	not available
PT	available	available	available	available	available	available	available	available	available	available	available
RO	available	available	available	available	not available	available	available	not eligible	not eligible	available	available
SE	available	not available	available	available	available	available	available	available	available	available	available
SI	available	not available	available	available	available	available	available	available	available	available	available
SK	available	available	available	available	available	available	available	available	available	available	available
UK-EN	available	not available	available	available	available	available	available	available	available	available	available
UK-NI	available	available	available	available	not available	available	not available	available	available	not available	available
UK-SC	available	available	available	available	available	available	available	available	available	available	available
UK-WL	available	not available	available	available	available	available	available	not available	not available	available	available

available for MR

not eligible for MR

not available

Trends in monitoring

Reported item	Sampling year		
	2015	2016	2017*
Countries with few ST/Nucl. (≥ 7 missing)	DK, PL, RO, GB-NI	DK, MT, PL, GB-EN, UK-SC, GB-NI	DK, GR, MT, RO, GB-NI
ST/Nucl. poorly reported (≥ 14 missing)	Air/G-beta Drink/Sr-90 Surf/R-beta	Air/G-beta Drink/Sr-90 Surf/R-beta	Air/G-beta Surf/R-beta
Countries with many ST/Nucl. (≤ 3 missing)	AT, BE, BG, CZ, DE, EE, ES, FI, HU, IT, MT, NL, PT, SE, SI, SK, UK-EN, UK-SC	AT, BE, CZ, DE, EE, ES, FI, HU, IT, PT, SE, SI, SK, UK-SC	AT, BE, BG, CZ, DE, EE, ES, FI, HR, HU, IT, NL, SE, SI, SK, UK-SC
ST/Nucl. poorly reported (≤ 7 missing)	Air/Cs-137 Milk/Cs-137 Drink/H-3 Diet/Cs-137 Surf/Cs-137	Air/Cs-137 Milk/Cs-137 Surf/Cs-137	Air/Cs-137 Milk/Cs-137 Diet/Cs-137 Surf/Cs-137

* Without IE and PT data

Thanks



Questions?

You can contact us at REMdbsupport@ec.europa.eu

Stay in touch!



ec.europa.eu/jrc



@EU_ScienceHub



EU Science Hub - Joint Research Centre



Joint Research Centre



EU Science Hub

marco.sangiorgi@ec.europa.eu



REMdb Data and System administration

Application Development & Maintenance

- Upgrade Data Submission Tool from vs 2.0 to 2.1
- Migration DST from Visual Studio 2013 to t VS 2015
- Migration DST from Oracle RDBMS version 10g to version 12c.