



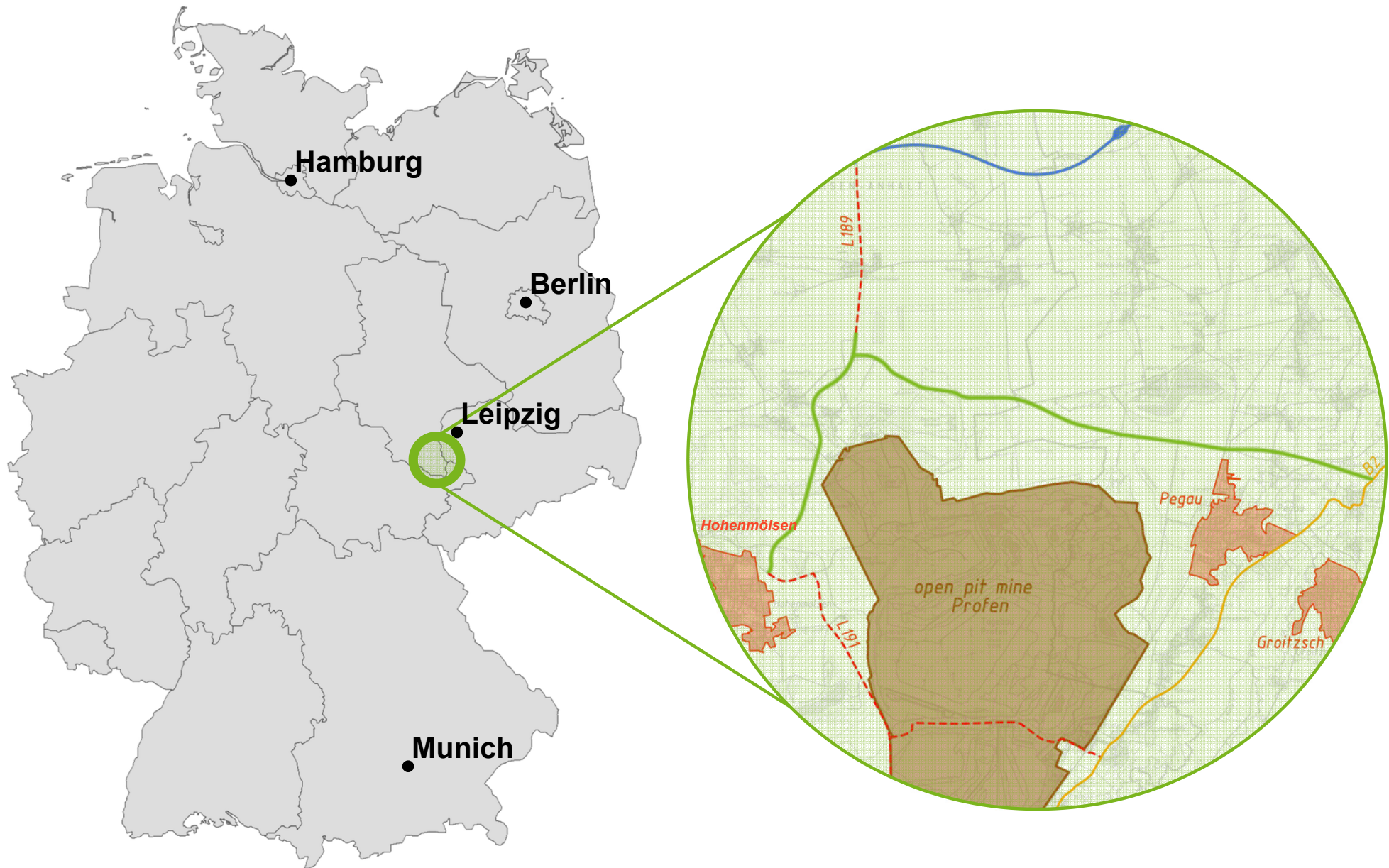
13.07.2018


TRANSREGIONAL CONNECTION OF REGIONAL ECONOMIC HUBS

European Coal Regions in Transition – Project Lab
Dr. Kai-Mark Steinbach, Chief Financial Officer

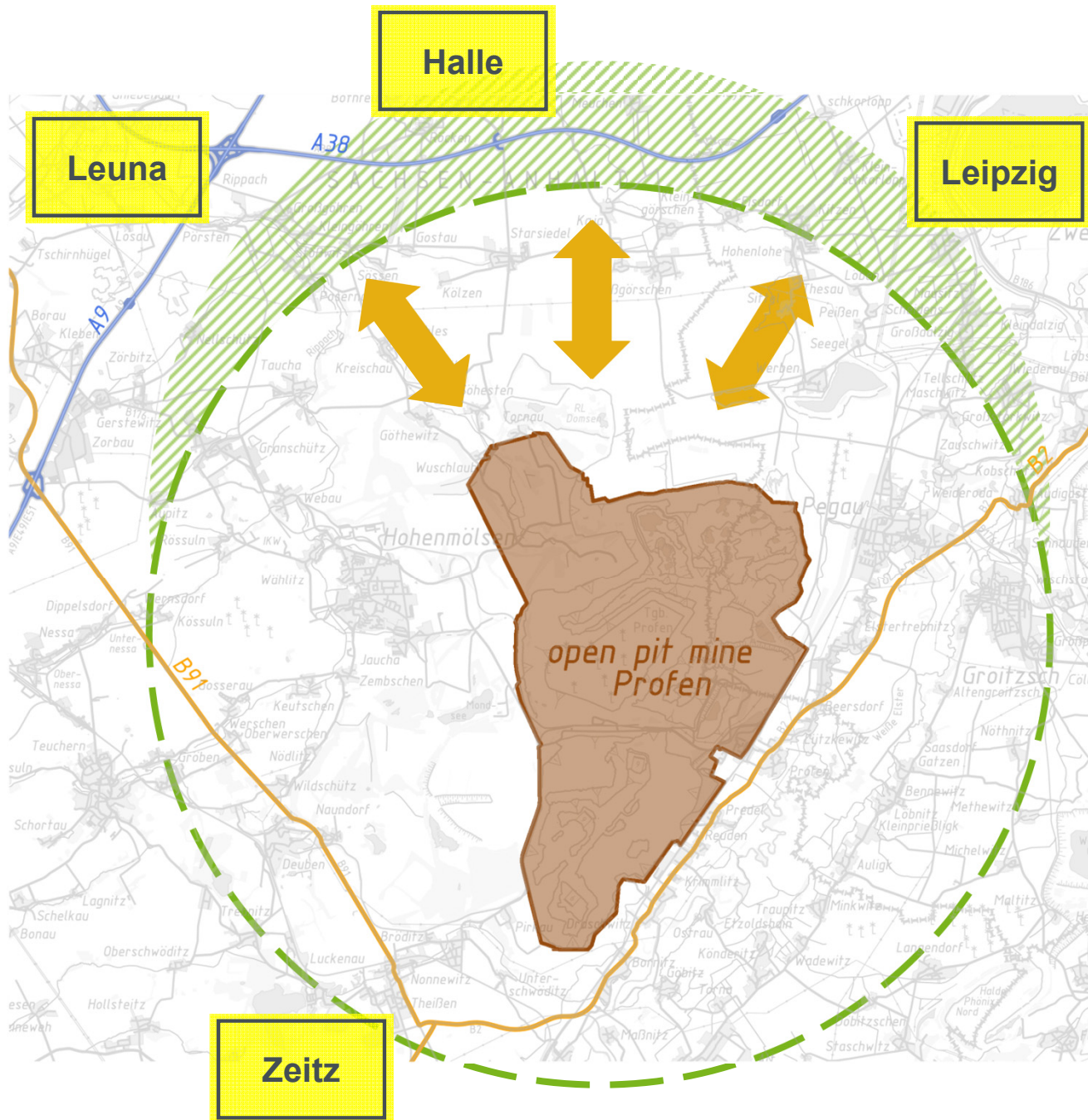


Region: southern Saxony-Anhalt/ western Saxony



Project	East-West Connection around Profen Mine
Regional Partners	
Project Details	<ul style="list-style-type: none">➤ Re-establishment of connection between the cities of Hohenmölsen and Pegau/Groitzsch➤ Length = about 12 km➤ CAPEX total = about EUR 55 million*
Background	<ul style="list-style-type: none">➤ Imperative element for development of an efficient infrastructure in the region

*first estimate

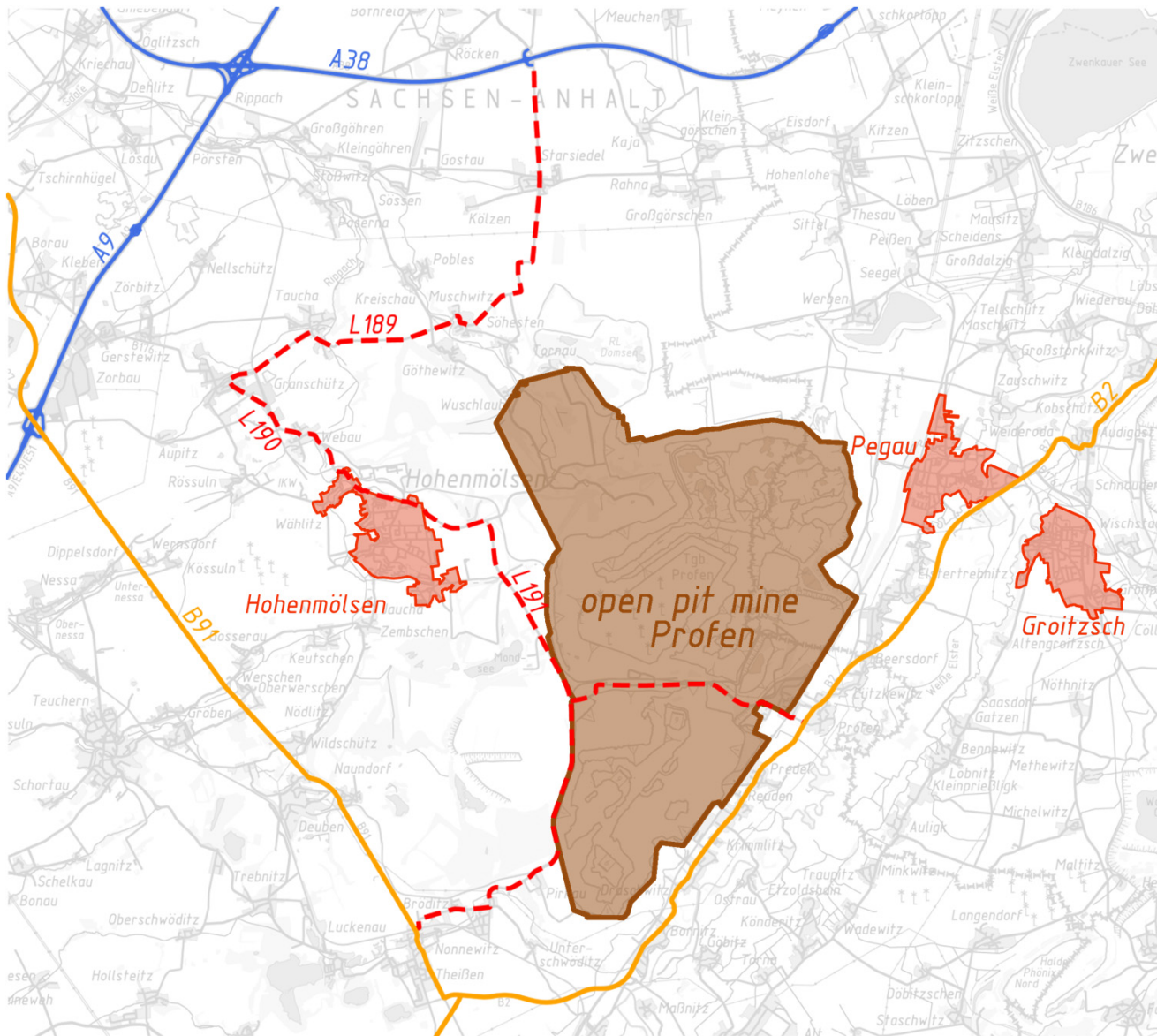


POTENTIALS

- Good opportunities for transport connections outside the mining region
 - Highways A9 and A38
 - Federal roads B2 and B91
- Proximity to economic centers
 - Leuna – 30 km
 - Halle – 60 km
 - Leipzig – 40 km

WEAKNESSES

- Missing efficient connections to transregional road network



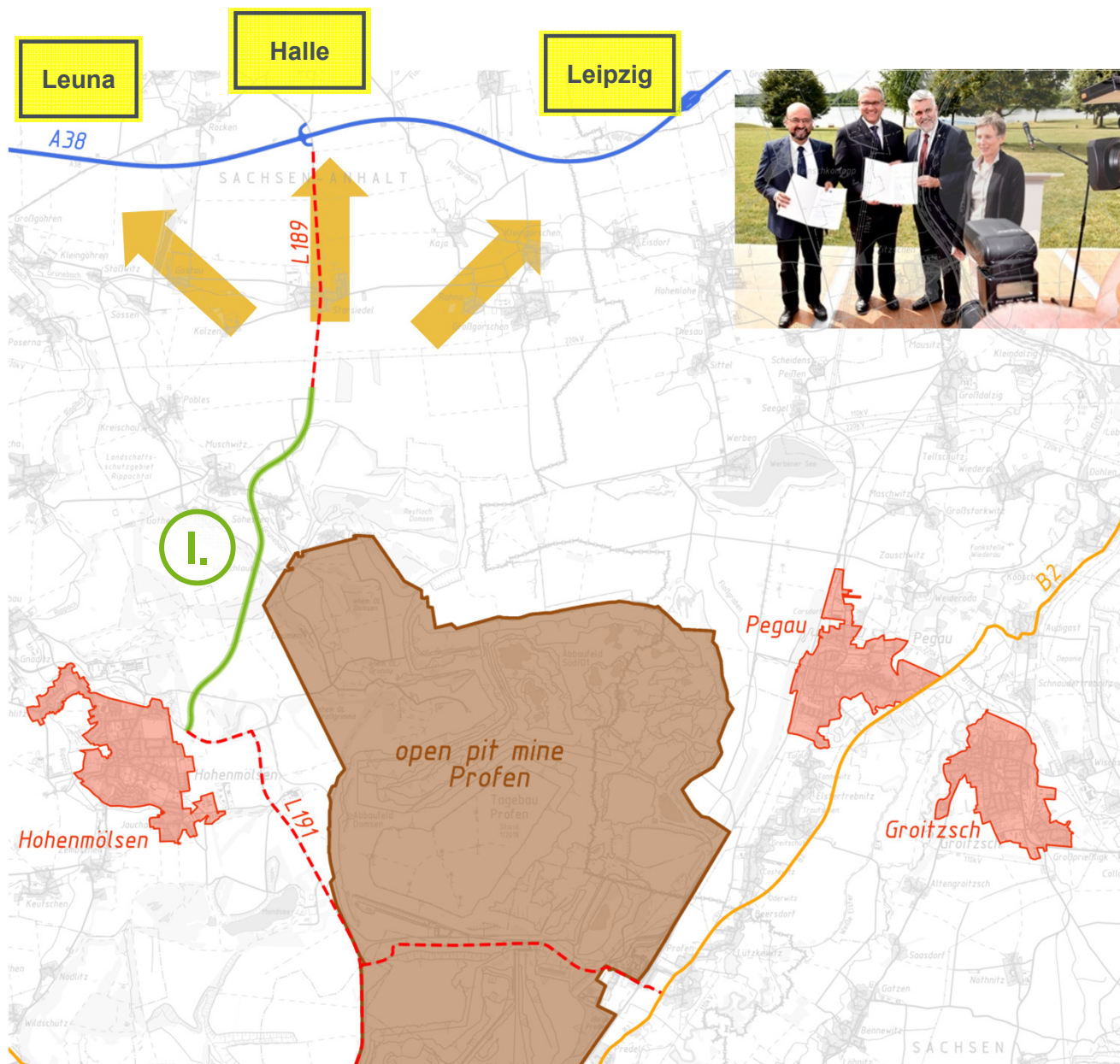
POTENTIALS

- Development of an integrated economic area

WEAKNESSES

- Separation of regional economic hubs
- High traffic volume and transit traffic in surrounding communities

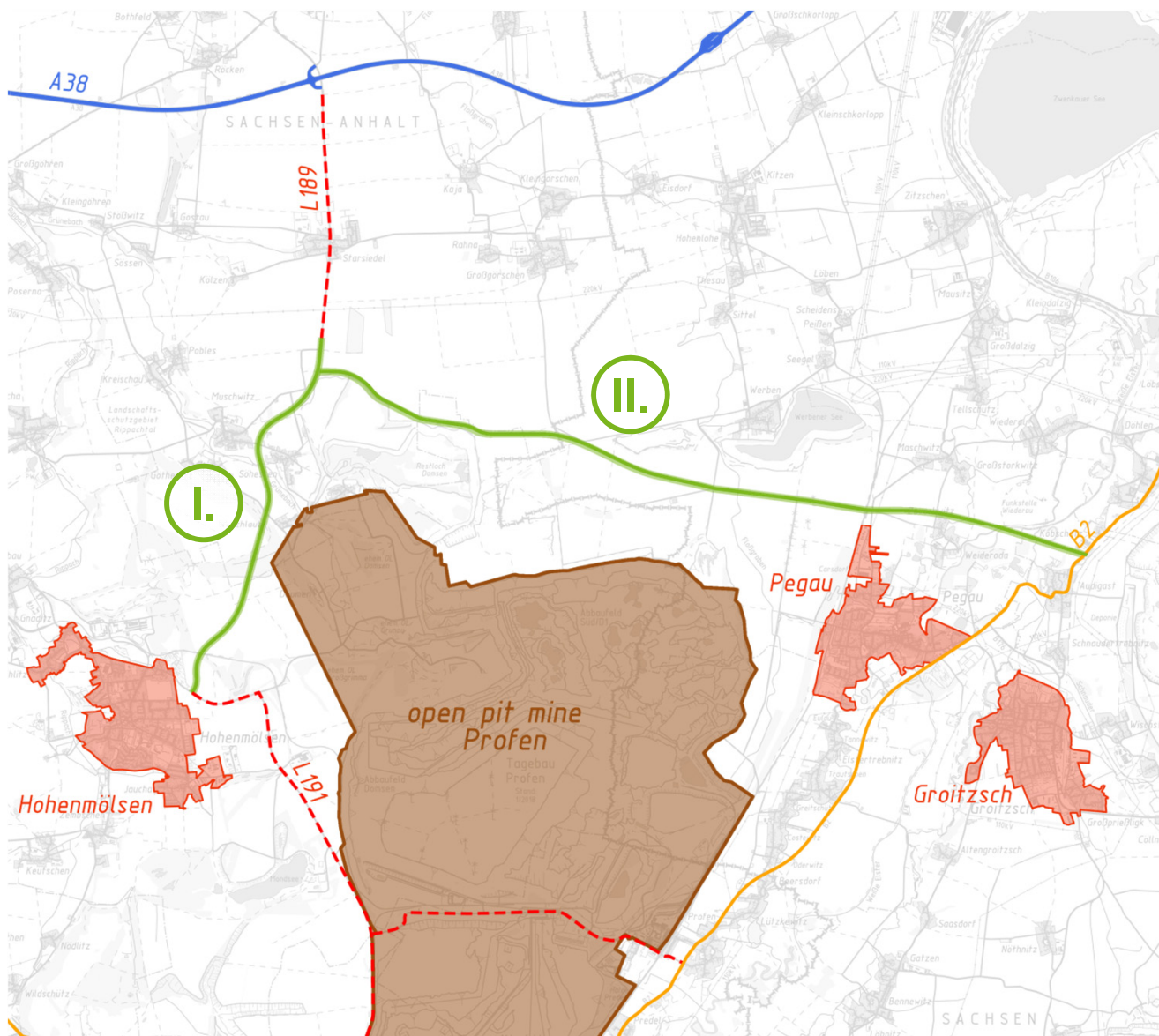
Phase I – North-South Connection



NORTH-SOUTH CONNECTION ✓

- Length = 6 km
- Financial support provided by Saxony-Anhalt and EU
- Funding commitment letter handed over on 25 June 2018
- Construction period: 2018 - 2022

- Establishment of direct connection to highway A38 and connection to economic centers
- Reduction of traffic load in the communities
- Increasing attractiveness of the area



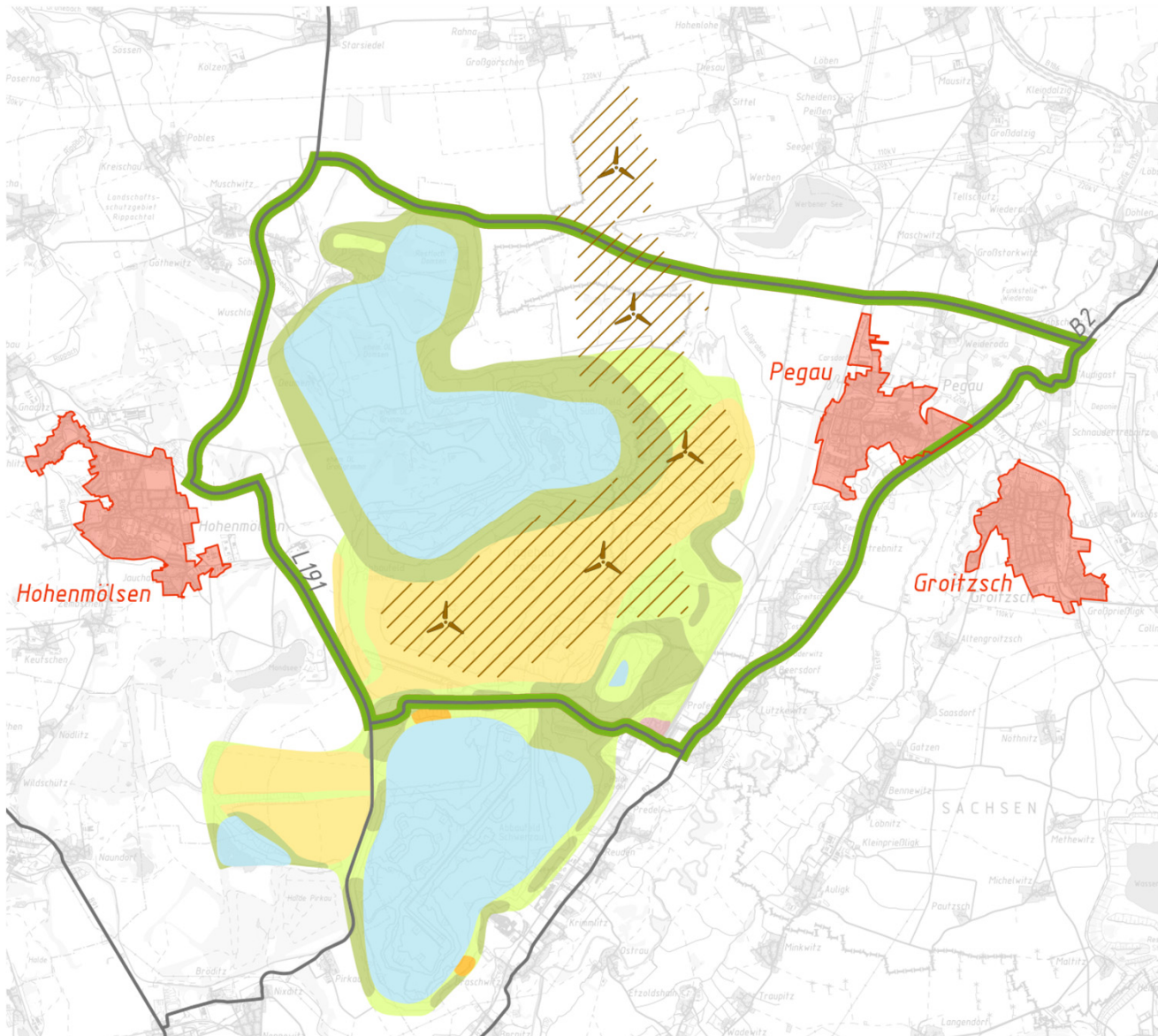
EAST-WEST CONNECTION

- Consistent development of transport infrastructure to create an integrated network of regional economic hubs
- Length = 12 km
- CAPEX total = EUR 55 million*



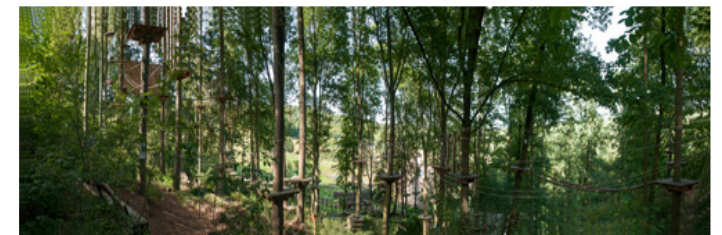
- Creation of an integrated economic area in the region
- Impetus to be provided for structural development from within the region itself

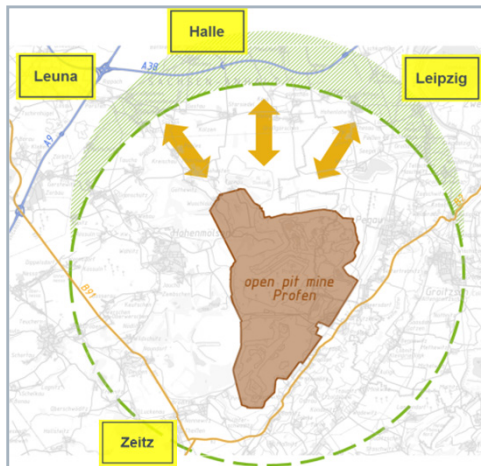
*first estimate



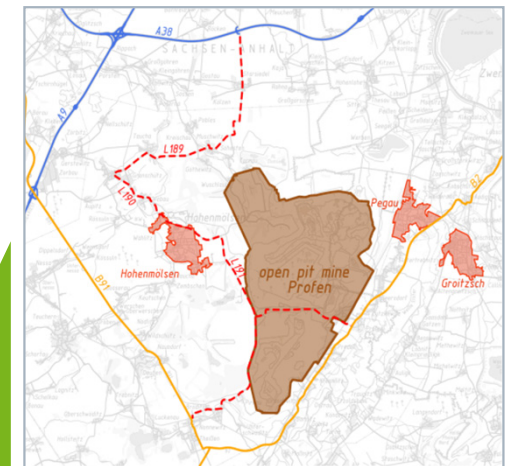
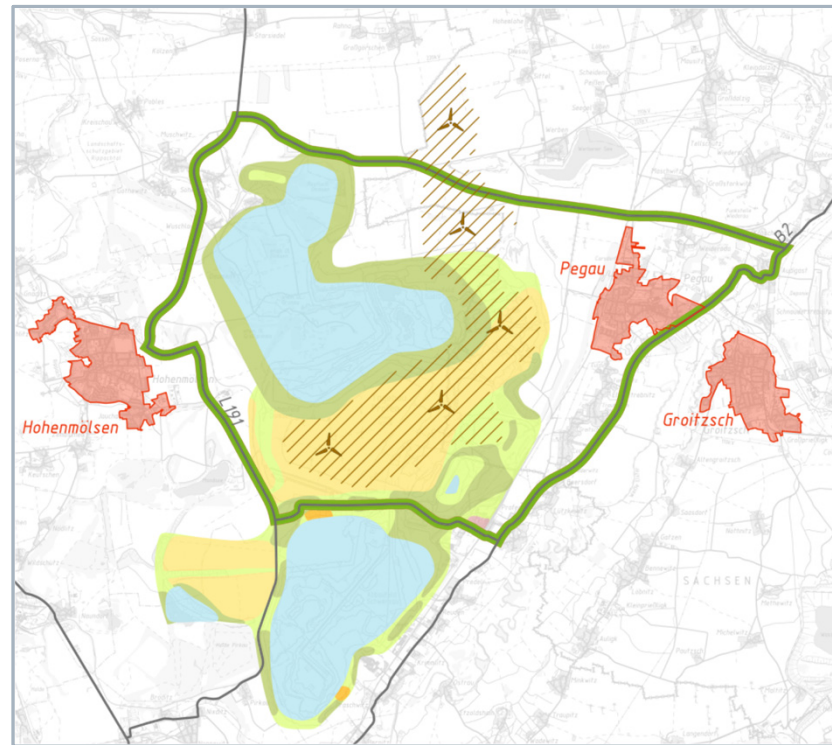
CLOSED LOOP OF ROADS

- Creation of an efficient loop connection around the future Domsen lake
- Exploration of future economic and tourism potentials





- Missing efficient connections to transregional road network



- Separation of regional economic hubs

ECONOMY

- Providing impetus for sustainable economic development in the region
- Strengthening the attractiveness of the region
- Creating an integrated economic area for exploration of economic potentials

PEOPLE

- Increasing residential attractiveness
- Shorter commuting distances
- Reducing traffic load in the communities
- Improving emergency escape routes and
- Offers of public transport

Glückauf and thank you very much for your attention!

