

National executive team

 **RE:START**

Usti, Karlovy Vary and  
Moravian-Silesian Region

# Governance model of implementation of RE:START Strategy in Czech Republic

Brussels, 8th April 2019



EVROPSKÁ UNIE  
Fond soudržnosti  
Operační program Technická pomoc



MINISTERSTVO  
PRO MÍSTNÍ  
ROZVOJ ČR

## Coal mining sites in the Czech Republic and places of interest for the Strategy:



### Some specific features:

- involving 3 coal regions with very specific features and, in many respects, specific development needs...
  - ⇒ ...resulting in extraordinary importance of coordinating the whole process of transformation

## Principles of the governance model of RE:START Strategy:

- Strategic approach
  - ⇒ input analysis (identifying baseline situation),
  - ⇒ strategic framework (defining implementation rules),
  - ⇒ action plans (defining specific actions and tasks).
- Coordination - the process is managed from government level and coordinated from the center
- Implementation on the basis of a government resolution = commitment and guarantee of continuity.
- Common procedures, unified negotiation methodologies.
- Individual approach in regions - involvement and activation of each region
- Continuous evaluation (at both - regional and government - levels) resulting in the flexibility of the whole implementation process (and interconnected benefits – e.g. Reallocations on the level of OPs within actual programming period).

## Principles of the governance model of RE:START Strategy:

- Involvement of the widest possible range of regional and central stakeholders.
- Open communication of the process of preparation and implementation of the RE:START Strategy and its Action plans through which the program is implemented („Top-Down / Bottom Up“ approach).
- Activating regional stakeholders.
- Building and developing capacities for implementation of restructuring / transformation projects.



- **First stage (2015 - 2018)**

→ Emphasis on creating a system at central level with respect to the needs of regions.

- **Second stage (2019- )**

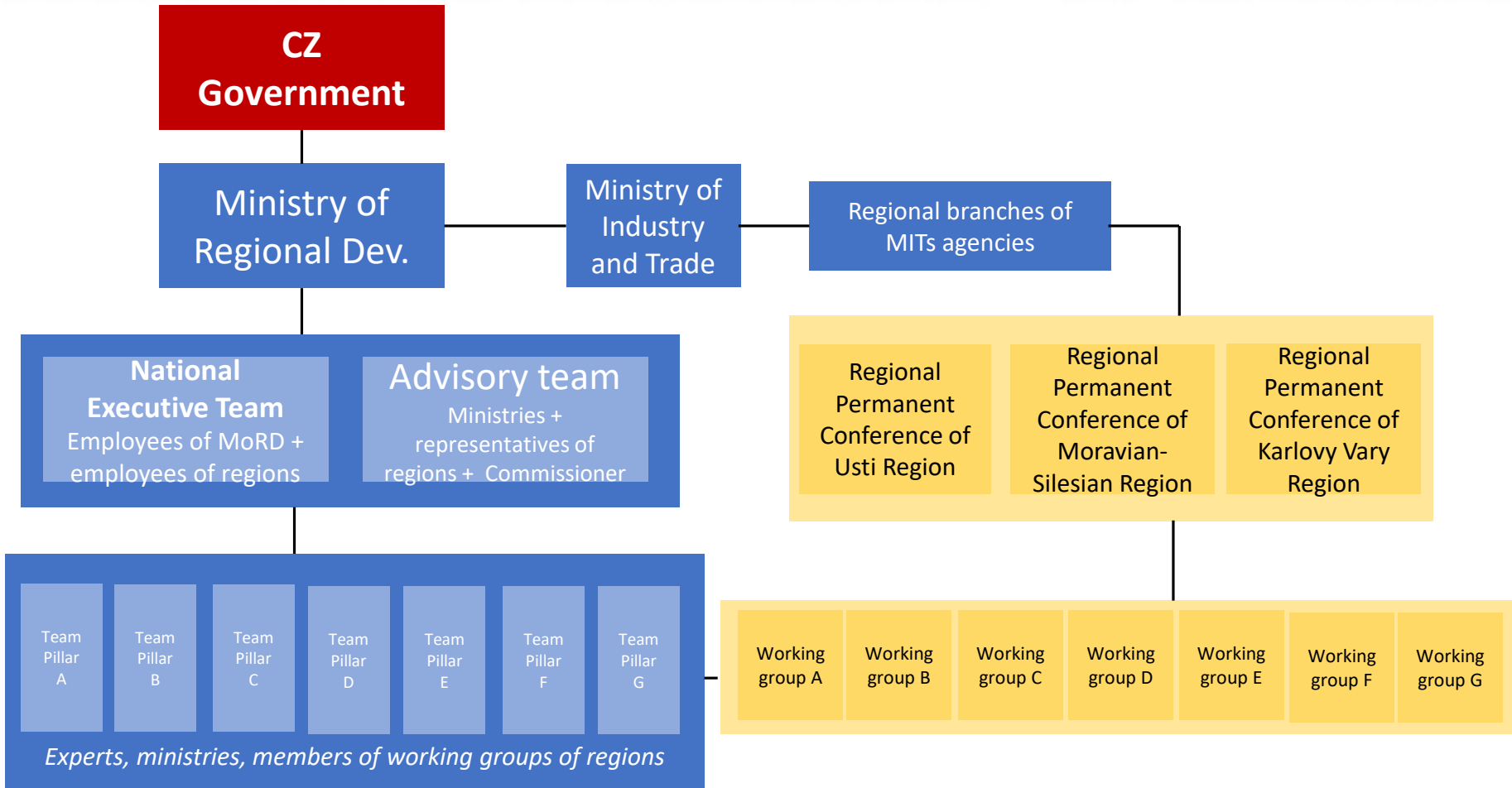
→ Emphasis on effective absorption and implementation in regions.

## **Change of the implementation structure of RE:START Strategy**

**(from 1<sup>st</sup> January 2019):**

- The main responsible resort is now the Ministry of Regional Development.
- The coordinating role passed from the Office of the Government Commissioner to the National Executive Team under the Ministry of Regional Development.
- Further strengthening the role of regions and its stakeholders - strengthening the executive teams on the level of Regional Authorities of the regions and their involvement in the preparation and implementation of the RE: START Action Plans.

# Change of the implementation structure



## New management structure:

- Executive level - both national and regional – newly **funded by ESIF (OP Technical Assistance)**.
- The **integrated co-ordination role** (MoRD - National Executive Team of 12 staff) is maintained.
- **Strengthening the role of regions** - their primary role is to increase absorption capacity and prepare projects in the region.
- The **participatory approach** of the individual regions through its „Regional Permanent Conferences“ and tripartite bodies is maintained and strengthened.
- The **individual approach** to addressing the regional specific needs is strengthened, the governor of each region is the guarantee of the implementation of the strategy in the region.

## Distribution of competencies – executive level - regional and central level:

### Regional Permanent Conferences

- Preparation of **strategic projects**
- **Supporting absorption capacity** and methodological support for regional stakeholders
- **Collecting the drafts of projects** and data from regions
- **Identification of barriers of implementation**
- Provision of activities of working groups activities at regional level
- **Seminars and workshops for regional stakeholders**
- Marketing activities of the Strategy on regional level
- Preparation of documents for purposes of the CRIT Platform at the regional level.

### National Executive Team

- **Preparation, implementation and evaluation of measures / support programs**
- Implementation methodology, schedules and procedures
- **Analysis of the need and absorption capacity of the specific measures**
- Success analysis of project applicants in individual programs
- Provision of activities of working teams for the strategy pillars
- **Negotiations with ministries and central institutions**
- **Creating documents for government meetings**
- Fulfilling the RE: START marketing strategy
- **Contact point for involvement of Czech regions in the CRIT Platform**



**Problems and limitations:**

- The specificity of some problems and needs of structurally disadvantaged / coal regions and the interconnected absence of relevant tools enabling their (integrated) solutions (tools are being developed now).
- Limited involvement of ministries and affected stakeholders to initiate concrete steps to fulfill specific measures and to comply with the timetable for their implementation.
- Insufficient readiness of specific projects in the regions (insufficient absorption capacity).
  - since the approval of the first Action Plan of the RE: START Strategy in 2017 we perceive the growing involvement of regional stakeholders and thus the growth of absorption capacity.
- Limited existence of "active civil society" and the danger of the loss of trust of those involved because of possible slowing down of the implementation process.
- There is still a relatively limited level of awareness among the general public about the RE:START Strategy and there are a lot of distorted ideas about its capabilities and possibilities.

## Expected benefits:

- Exchange of experiences and best practices between regions
- Creation and efficient use of new tools directly targeting coal regions, including those contributing to the development of efficient transition management models
- Strengthening the capacity of the Czech Republic and its coal regions in the process of continuing to strengthen the role of civil society as an important player in the transition process

## Basic recommendations:

- Creation of clearly defined strategies including their implementation structure (respecting the region's needs and possibilities of joint management)
- Ensuring sufficient resources for the implementation structure (e.g. With using the potential of ESIF)
- Providing resources and tools for implementing measures and projects
- Continuous evaluation

National executive team

 **RE:START**

Usti, Karlovy Vary and  
Moravian-Silesian Region

Thank you for your attention

Karel Tichý

Deputy Manager of RE:START Strategy  
Ministry of Regional Development

[karel.tichy@mmr.cz](mailto:karel.tichy@mmr.cz)



EVROPSKÁ UNIE  
Fond soudržnosti  
Operační program Technická pomoc



MINISTERSTVO  
PRO MÍSTNÍ  
ROZVOJ ČR