

Richard Wakeford

on behalf of

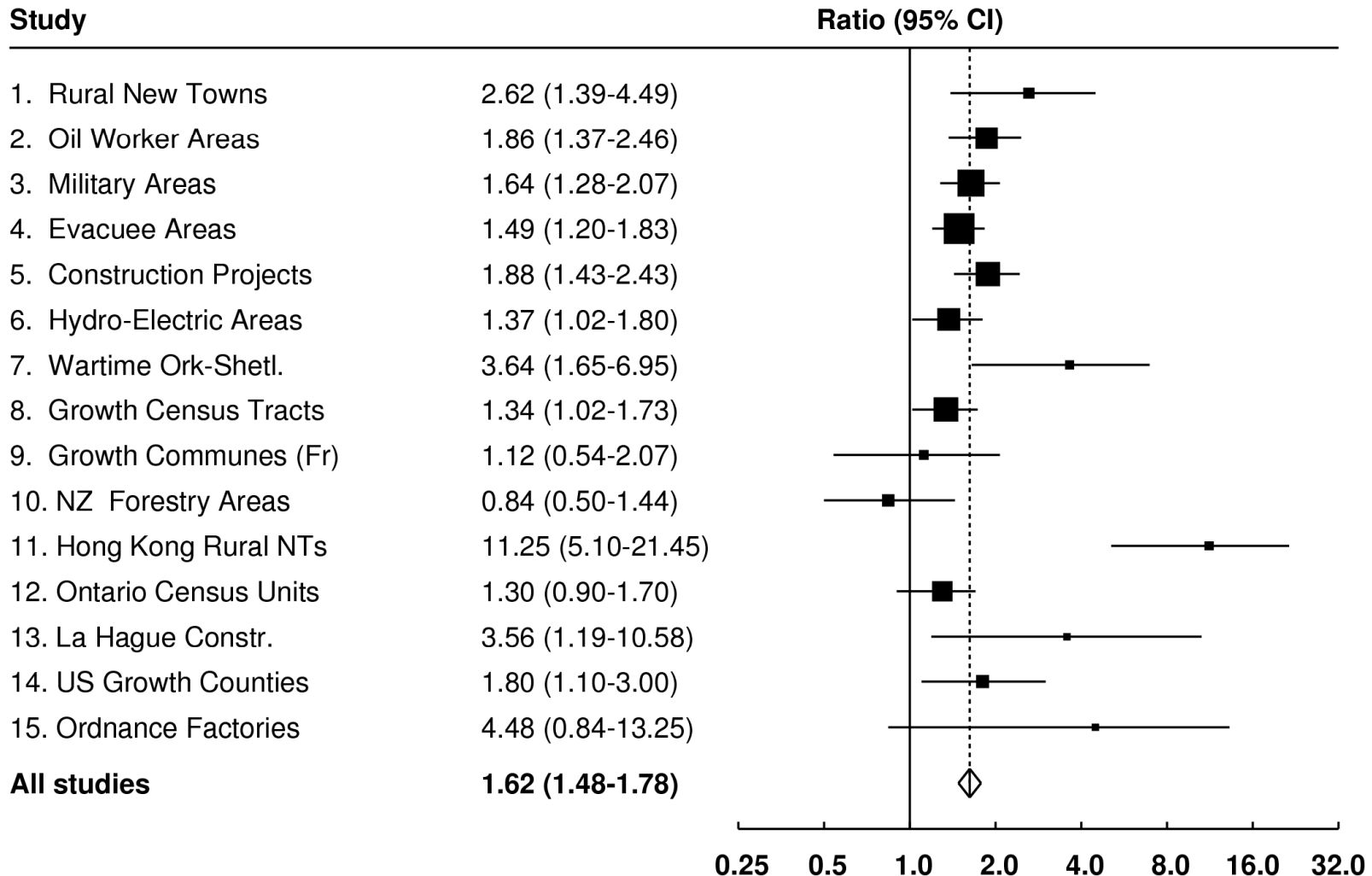
Professor Leo Kinlen

Division of Public Health & Primary Health Care
University of Oxford



Rural Population Mixing

EXTREME RURAL POPULATION MIXING & CL. 0 - 14 Yrs



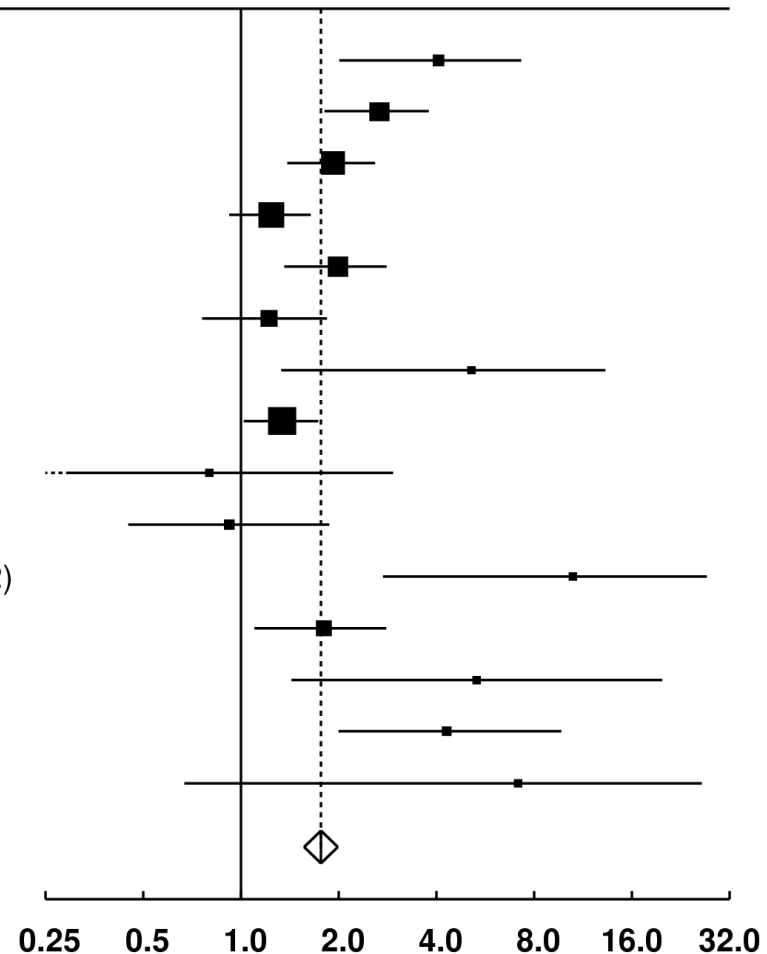
Rural Population Mixing

EXTREME RURAL POPULATION MIXING. & CL. 0 - 4 Yrs

Study

Ratio (95% CI)

1. Rural New Towns	4.06 (2.01-7.29)
2. Oil Worker Areas	2.67 (1.81-3.79)
3. Military Areas	1.92 (1.39-2.59)
4. Evacuee Areas	1.24 (0.92-1.64)
5. Construction Projects	1.99 (1.36-2.81)
6. Hydro-Electric Areas	1.22 (0.76-1.84)
7. Wartime Ork-Shetl'd	5.13 (1.33-13.26)
8. Growth Census Tracts	1.34 (1.02-1.73)
9. Growth Communes (Fr.)	0.80 (0.08-2.94)
10. N.Z. Forestry Areas	0.92 (0.45-1.87)
11. Hong Kong Rural NTs	10.53 (2.74-27.22)
12. Ontario Census Units	1.80 (1.10-2.80)
13. La Hague Construction	5.32 (1.43-19.84)
14. US Growth Counties	4.30 (2.00-9.70)
15. Ordnance Factories	7.14 (0.67-26.27)
All studies	1.76 (1.57-1.99)



Urban Population Mixing

EXTREME URBAN POPULATION MIXING & CL. 0 - 14 Yrs

Study

Ratio (95% CI)

1. Overspill New Towns	0.86 (0.47-1.44)
2. Oil Worker Areas	1.08 (0.81-1.42)
3. Military Areas	1.12 (0.98-1.28)
4. Evacuee Areas	0.92 (0.73-1.15)
5. Commut'g Incr. Ts	1.50 (1.19-1.87)
6. Hong Kong Incr. Areas	0.72 (0.41-1.17)
7. Ontario Census Units	0.80 (0.70-1.00)
8. Growth Census Tr (E-W)	0.89 (0.77-1.02)
All studies	1.00 (0.93-1.07)

