



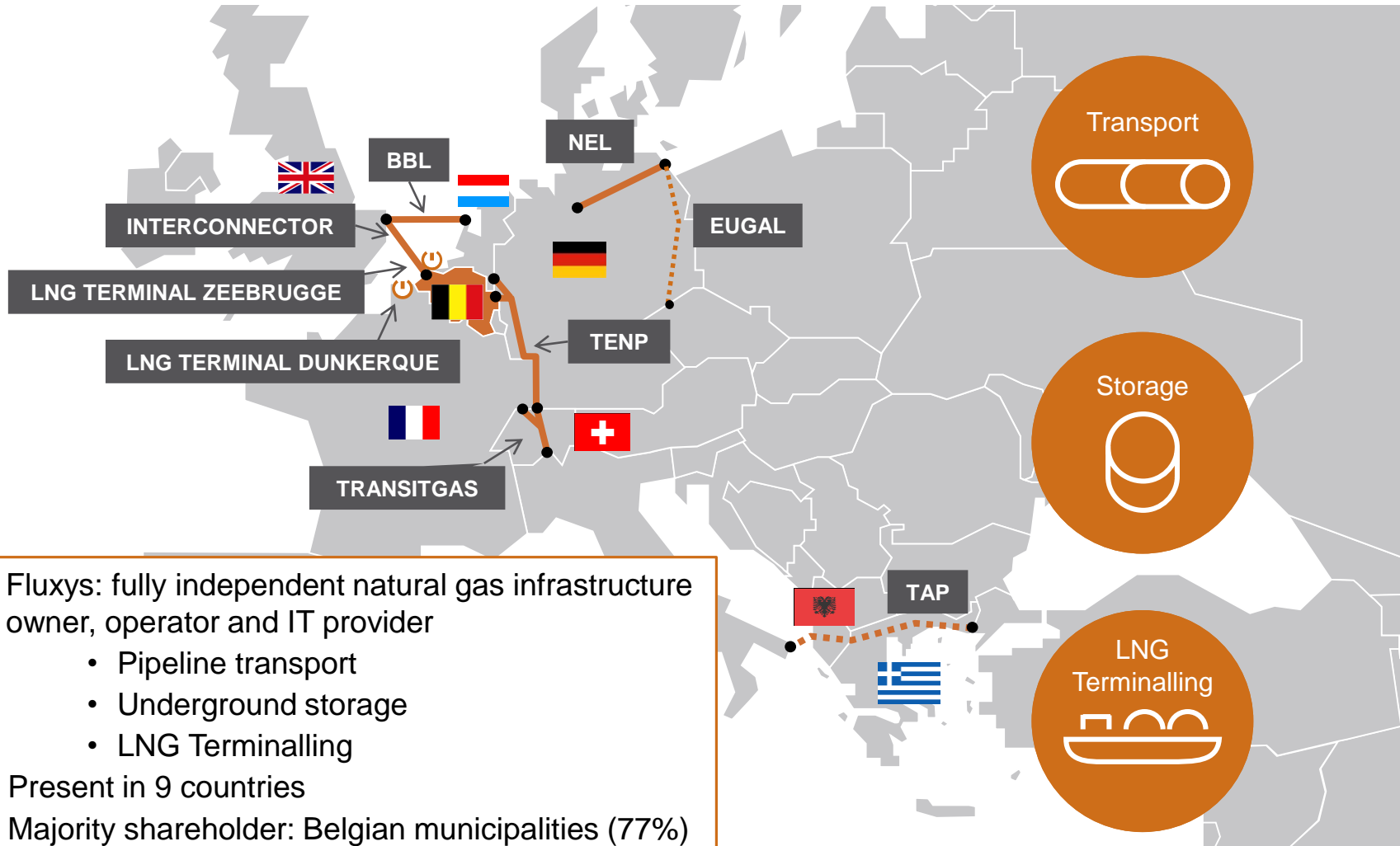
FLUXYS LNG  
TERMINAL  
ZEEBRUGGE

## First workshop of the Eastern Partnership LNG Network

Hany Aouad

Warsaw Feb. 20<sup>th</sup> 2019

# FLUXYS: HIGH PRESSURE NATURAL GAS & LNG INFRASTRUCTURE COMPANY



# KEY ROLE OF ZEEBRUGGE AREA

Interconnector pipeline  
↔ United Kingdom

Zeepipe pipeline from  
Norwegian gas fields

## INTERCONNECTOR

1998

To Zeebrugge :  
20 bcm/y

To UK :  
25.5 bcm/y

## ZTP PHYSICAL

1999

62 bcm/y  
net traded 2017

## LNG TERMINAL

1987

9 bcm/y

Dunkirk-Maldegem  
pipeline

## CAPACITY FROM FRANCE

2016

8 bcm/y

## ZEEPIPE TERMINAL

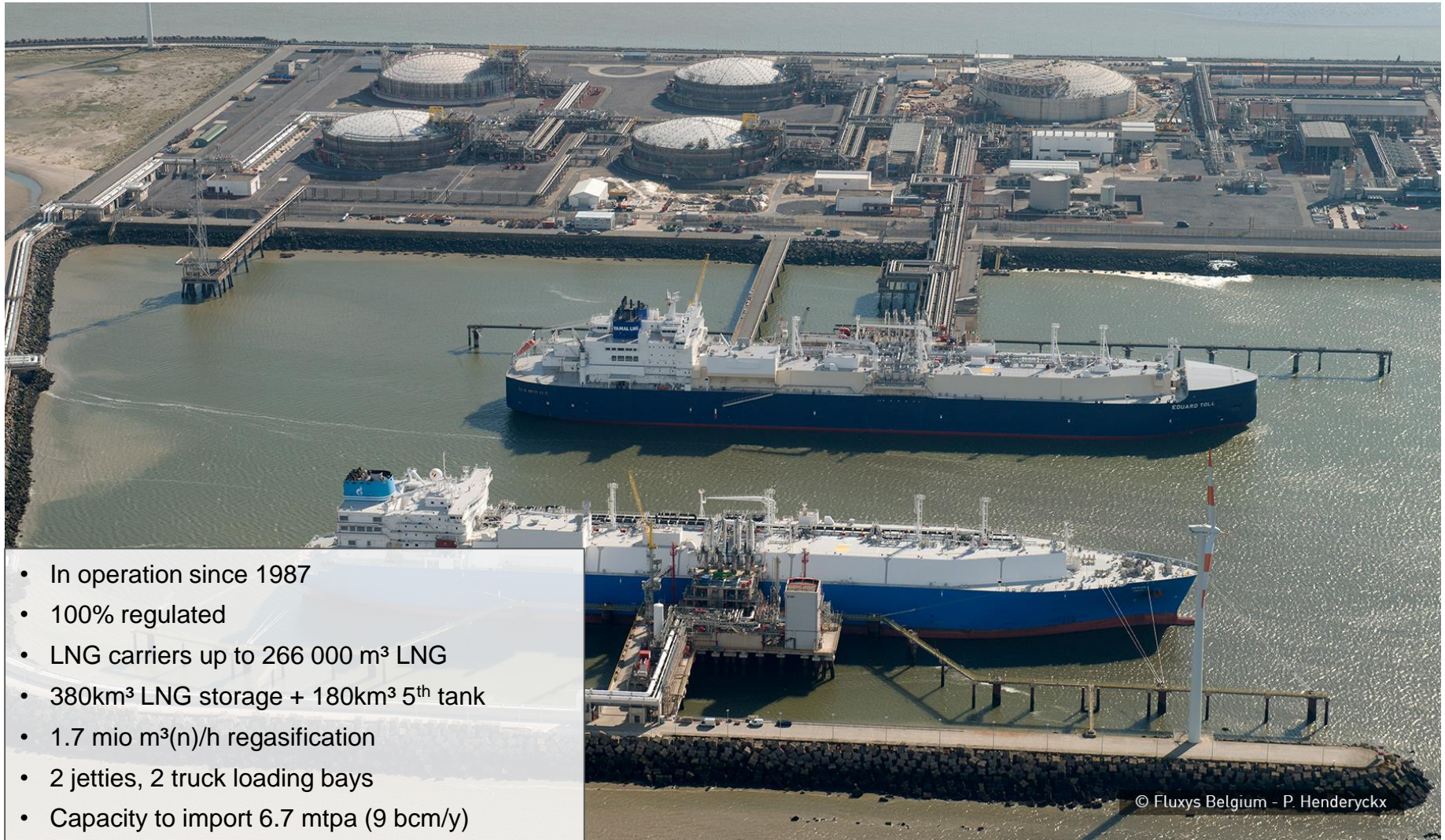
1993

15 bcm/y

Zeebrugge area : throughput capacity of ~ 57 bcm/y  
= over 12% of border capacity needed to supply Europe



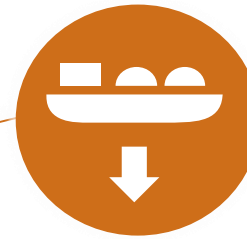
# ZEEBRUGGE LNG TERMINAL



- In operation since 1987
- 100% regulated
- LNG carriers up to 266 000 m<sup>3</sup> LNG
- 380km<sup>3</sup> LNG storage + 180km<sup>3</sup> 5<sup>th</sup> tank
- 1.7 mio m<sup>3</sup>(n)/h regasification
- 2 jetties, 2 truck loading bays
- Capacity to import 6.7 mtpa (9 bcm/y)

© Fluxys Belgium - P. Henderyckx

# ZEEBRUGGE LNG TERMINAL



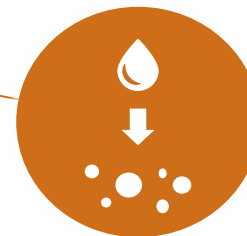
UNLOADING

1987 Commissioning

First 20 years:

- Regas for Belgium
- 1 terminal user
- Throughput capacity:  
4 mio tonnes per year

2008

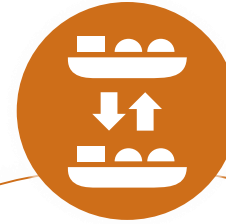


REGASIFICATION

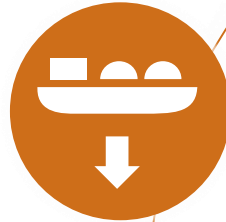


# ZEEBRUGGE LNG TERMINAL

TRANSSHIPMENT



UNLOADING



TRUCKLOADING



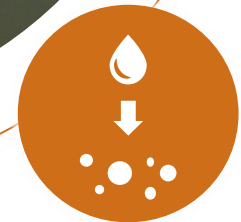
2008

- 4<sup>th</sup> storage tank
- Double regas
- 2 truck loading bays
- Open Rack Vaporiser (less emissions)
- Second jetty
- Ship-to-ship transfers
- 5<sup>th</sup> tank construction
- Multiple Terminal users

2019 today



SMALL AND LARGE LOADING

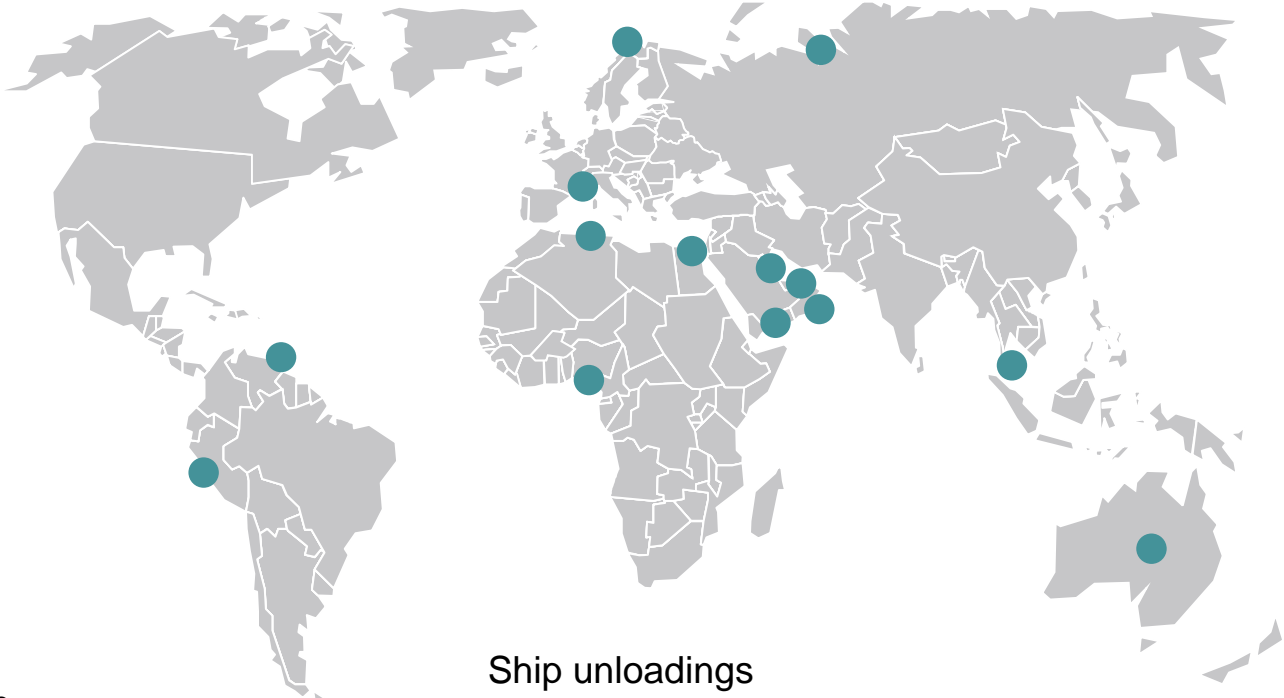


REGASIFICATION

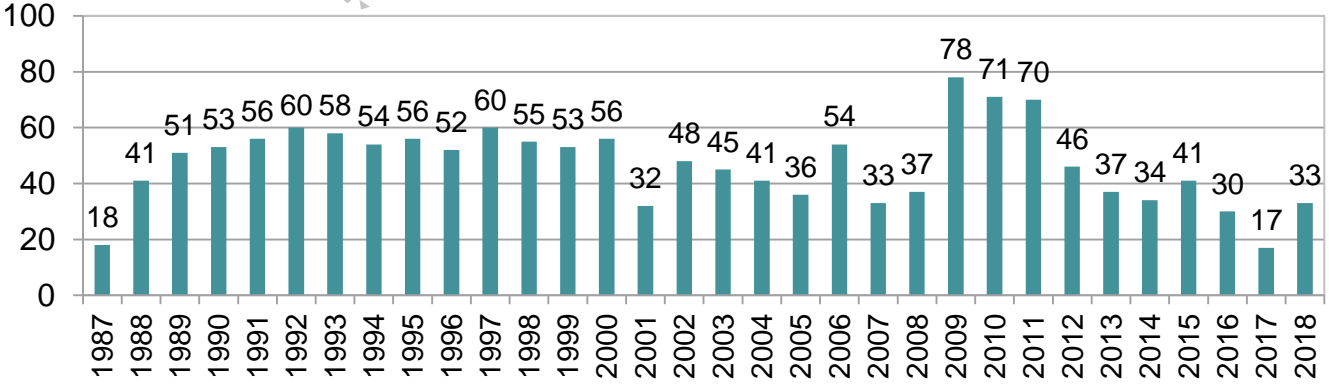
## MULTIPLE TERMINAL USERS

Shipper	Duration (years)	Quantity (mtpa)	Slots (per year)	As from
Qatar Petroleum / ExxonMobil → assigned to EDFT	20	3.3	55	Apr 2007
Eni	20	2.0	33	Apr 2007
Total	15	1.4	22	Oct 2008
		6.7 mtpa	110	9 BCM
YAMAL	20	8	214	Mid 2019
Small scale LNG: Gasum, Skangas, Nauticor, Prima LNG, GasCom, Rolande LNG, Titan LNG, Molgas, Broadview, Air Liquide...				

# LNG SHIP UNLOADING: A FLURRY OF SOURCES

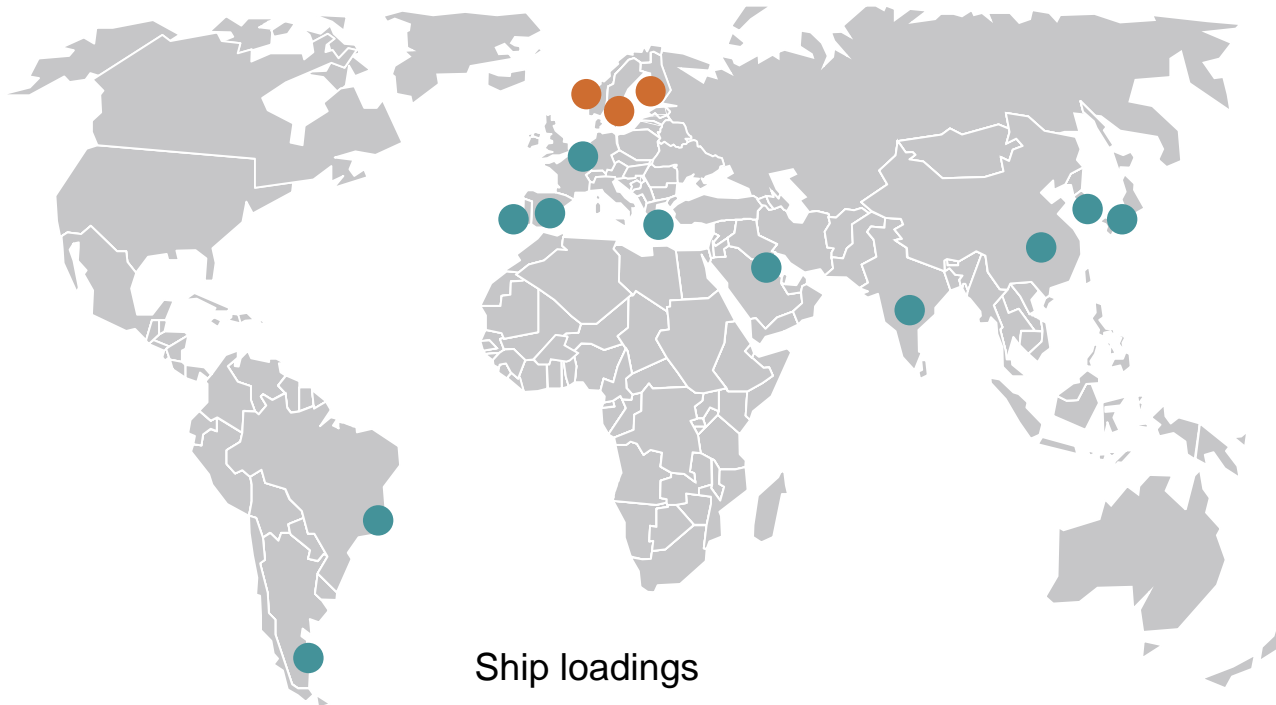


Ship unloadings

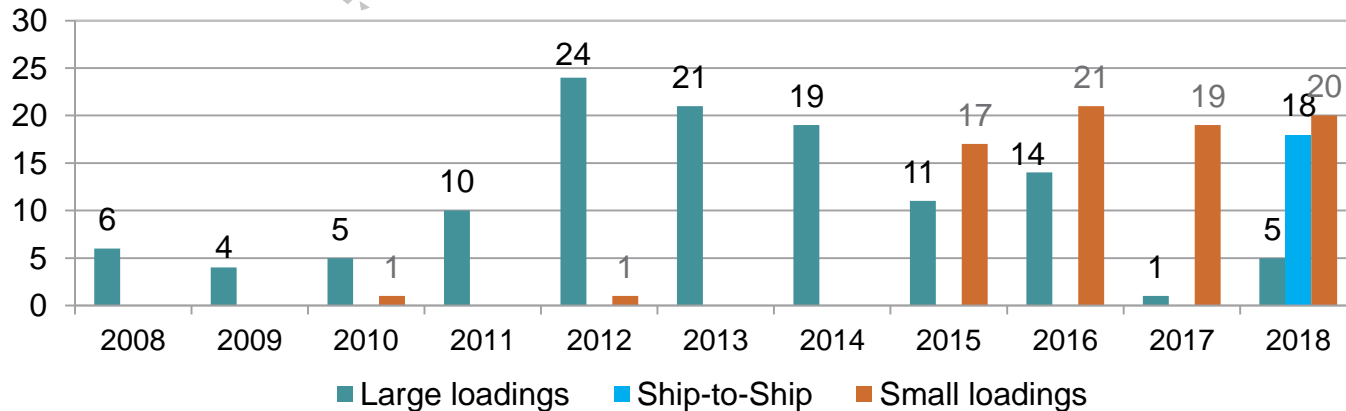




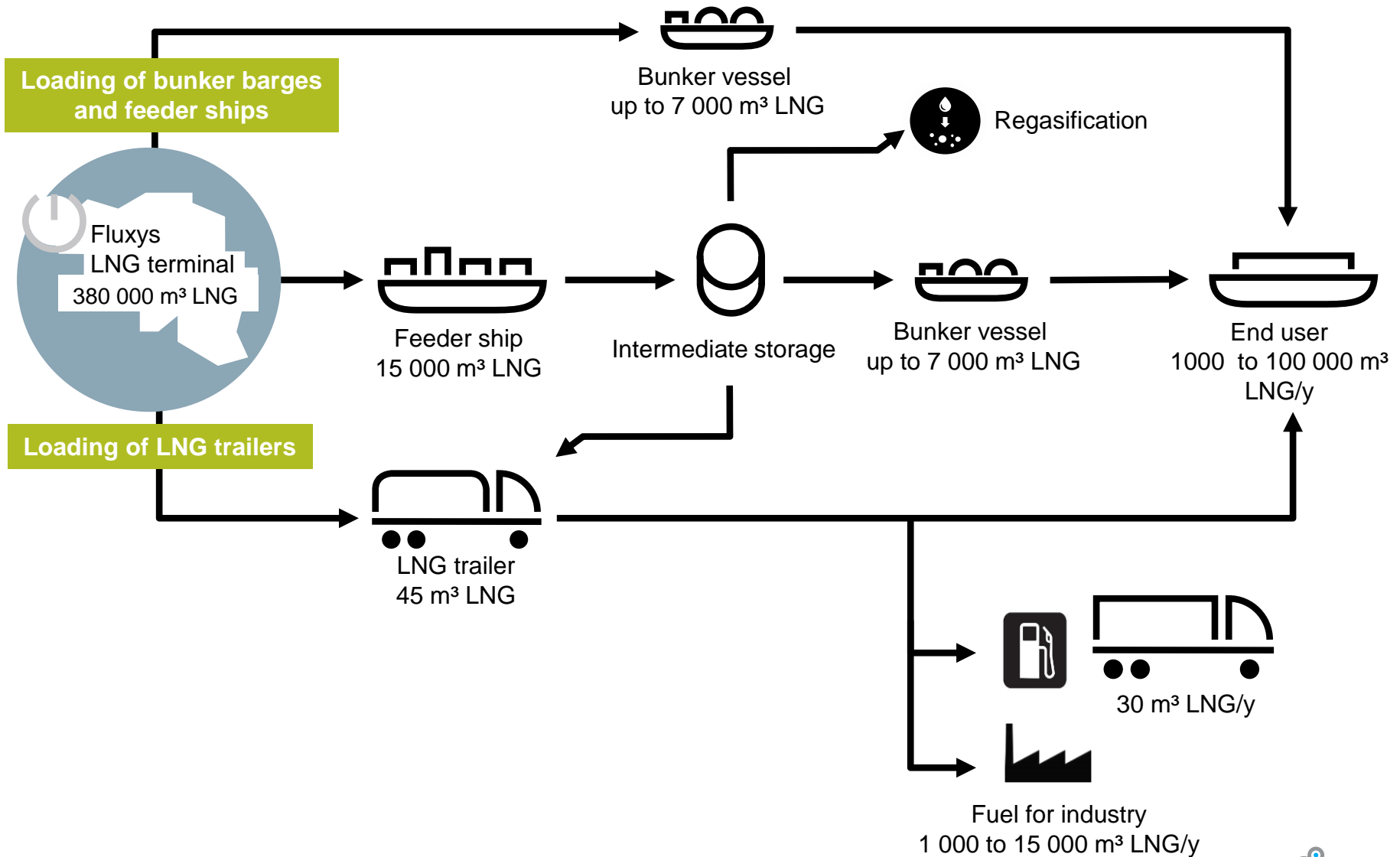
# FIRST IMPORT TERMINAL TO START SHIP LOADING: 2008



Ship loadings



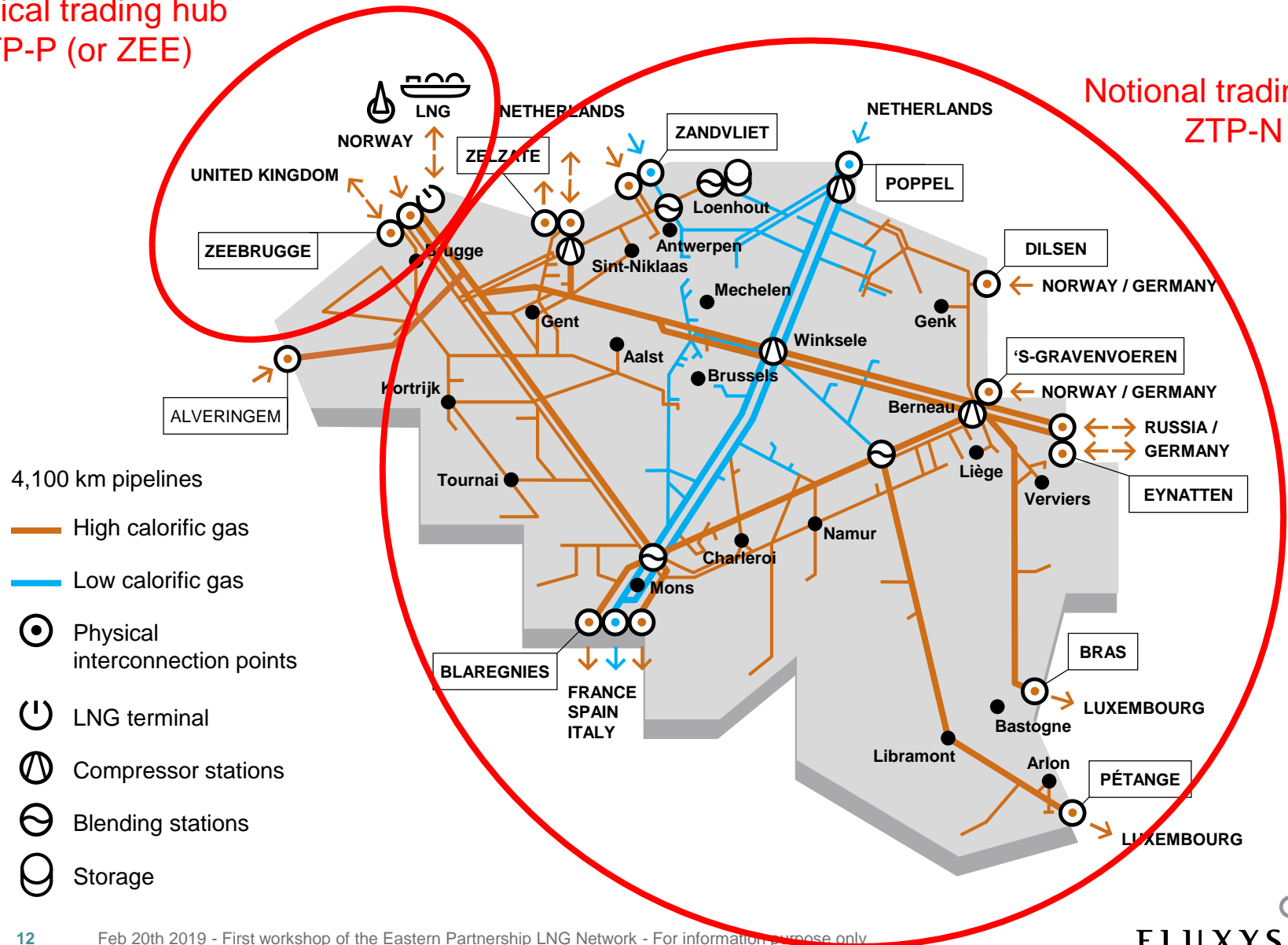
# DOWNSTREAM SMALL SCALE LNG SUPPLY FROM ZEEBRUGGE: A CLOSER LOOK



# HIGHLY INTERCONNECTED NETWORK WITH TWO GAS TRADING HUBS

Physical trading hub  
ZTP-P (or ZEE)

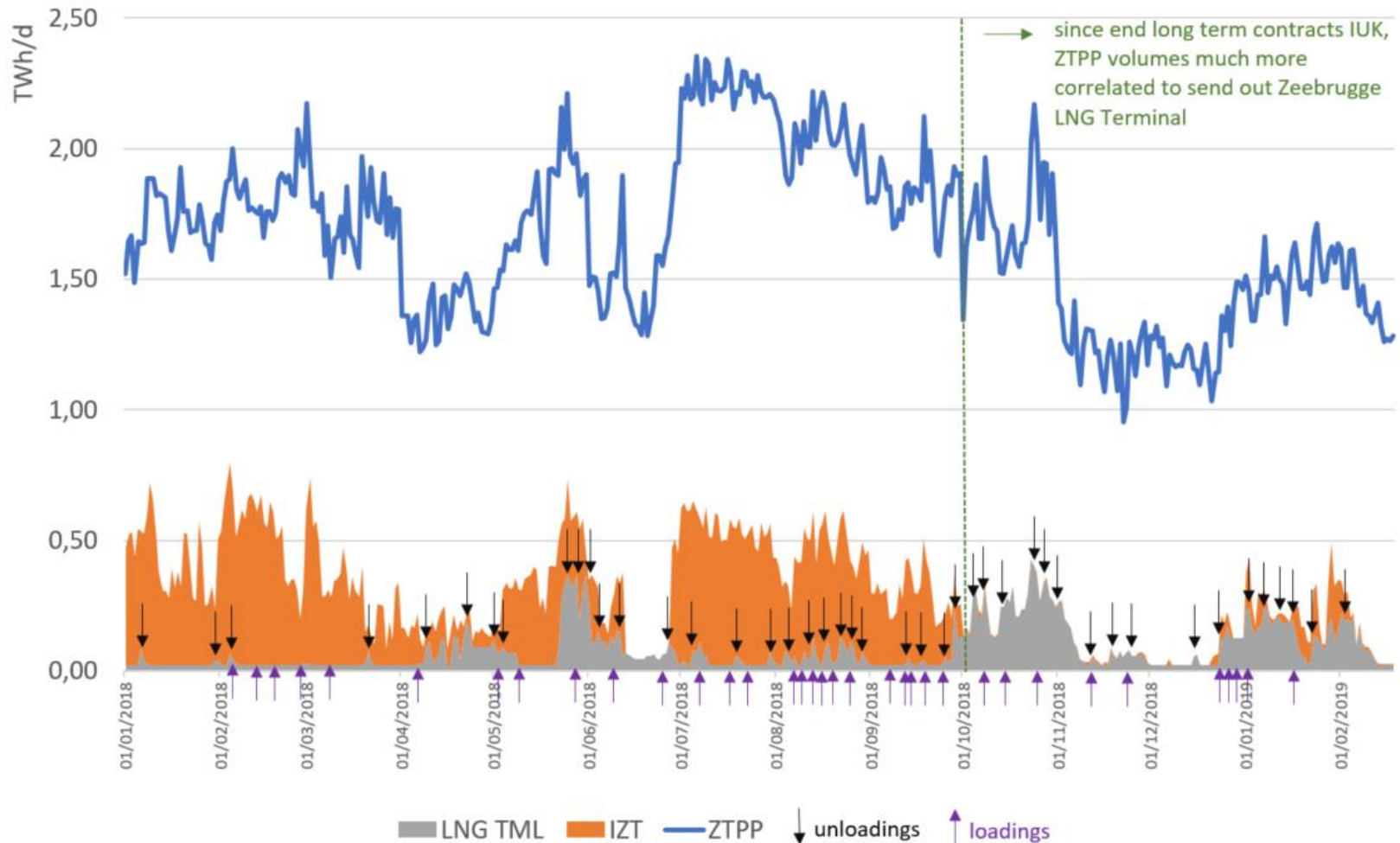
Notional trading hub  
ZTP-N



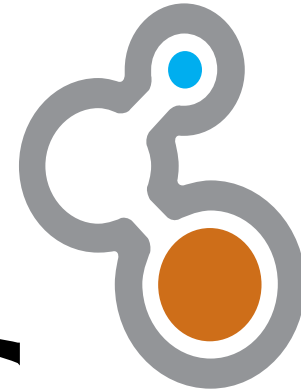


# INFLUENCE OF LNG UNLOADINGS ON EXCHANGED VOLUMES ON ZTP-P (ZEE)

Comparison ZTPP volumes with flows at IZT and Zeebrugge LNG Terminal



# FLUXYS



Hany AOUAD  
+32 22 82 73 43  
info.LNG@fluxys.com