

27 APRIL 2021

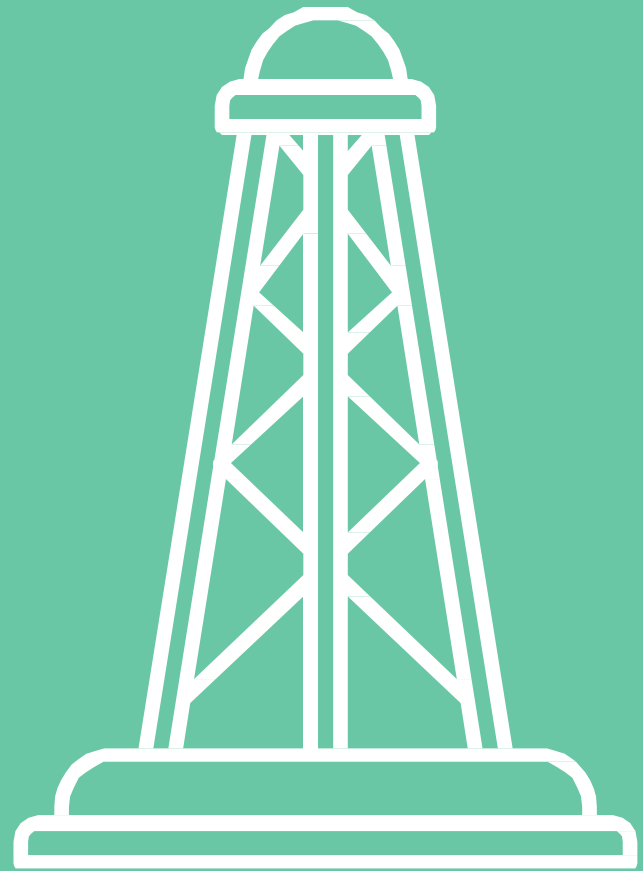
IEDEREEN  
GENKT



# Coal Regions in Transition

## Creative energy from industrial heritage in Genk

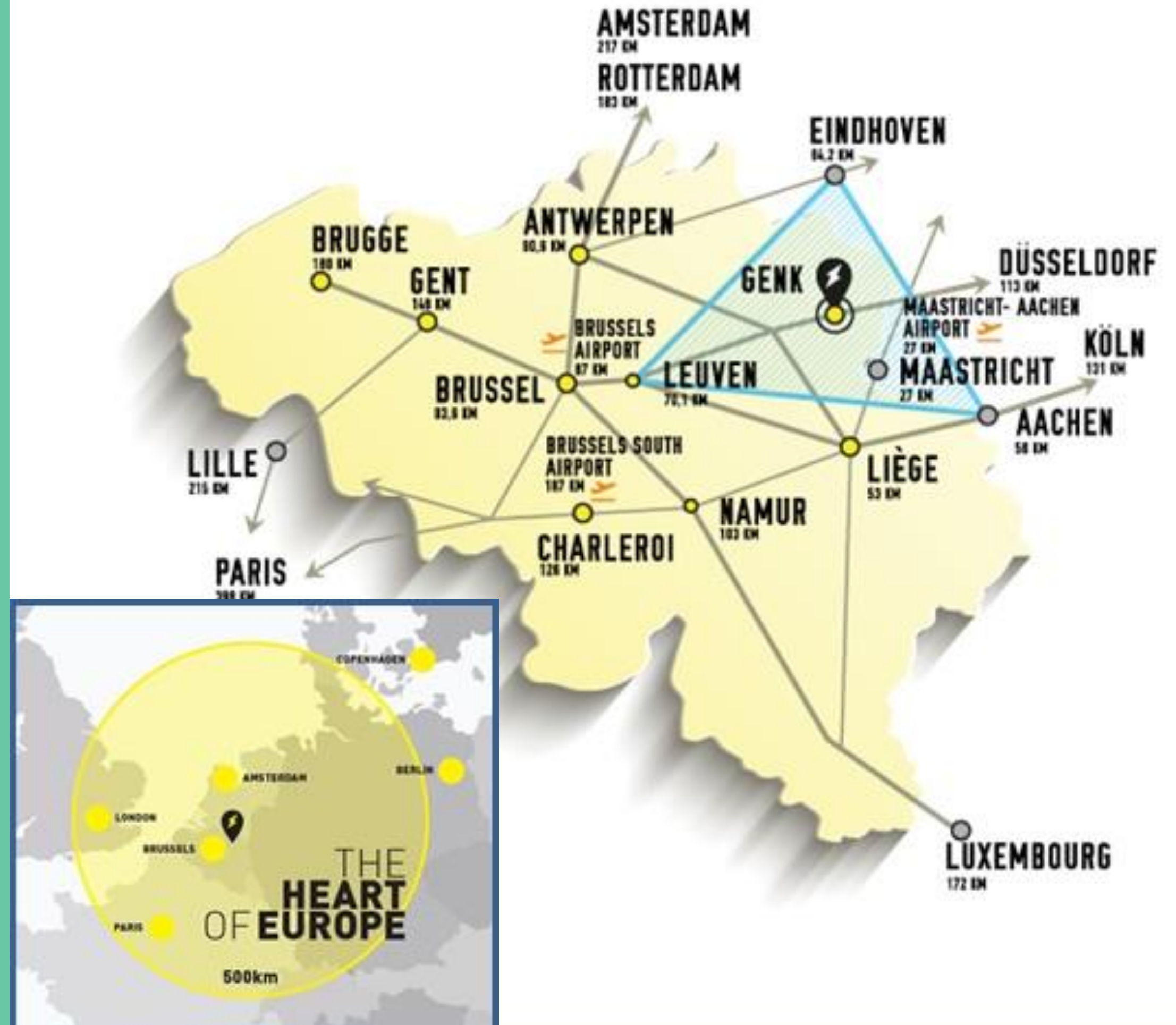
Wim Dries - Mayor of Genk



GENK: FROM COAL MINING VIA  
INDUSTRY TO TODAY

THE ROLE OF CULTURE & CREATIVITY

GREAT  
ACCESSIBILITY,  
STRONG  
ECONOMIC  
POSITION



# 4 INDUSTRIAL REVOLUTIONS IN 100 YEARS

## 1ST INDUSTRIAL REVOLUTION



## 2ND INDUSTRIAL REVOLUTION



## 3RD INDUSTRIAL REVOLUTION



## 4TH INDUSTRIAL REVOLUTION



CLOSURE MINES

CLOSURE FORD



1901

1917

1964

1990

present

Coal mines

Ford Genk

Introduction of

Creativity

Manual labor

Automatisation

electronics and IT for

Renewable energy

Steel

higher automatization

Technologie

Oil

of production

just-in-time logistics



(added value)

SMART CITY

**HOW?**

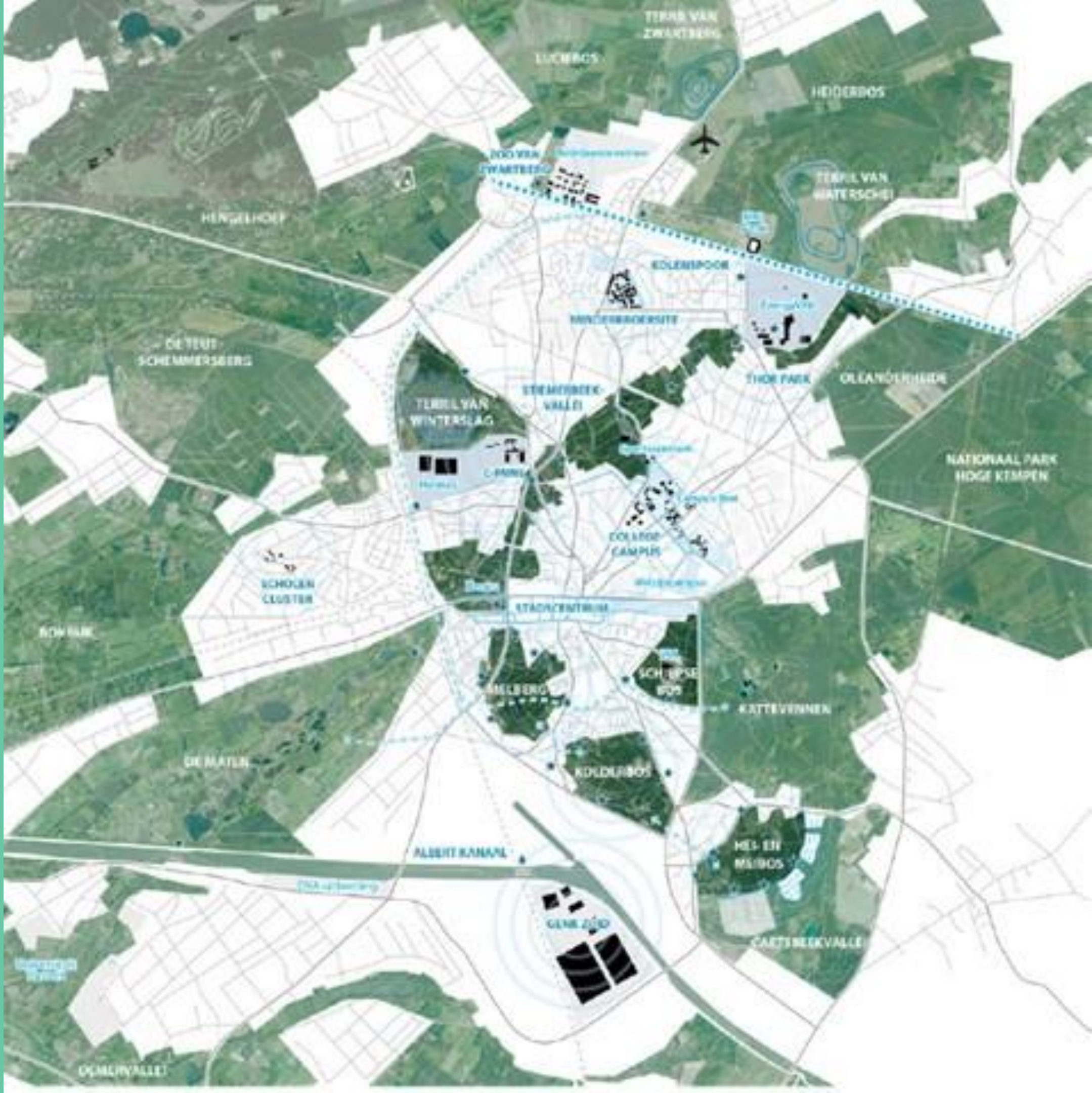
## **TRANSFORMING A CITY**

- Design thinking
- Cultural thinking
- Social design
- Putting things into motion

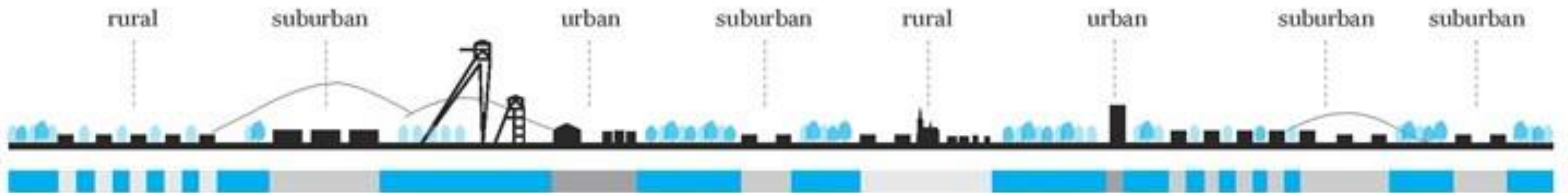
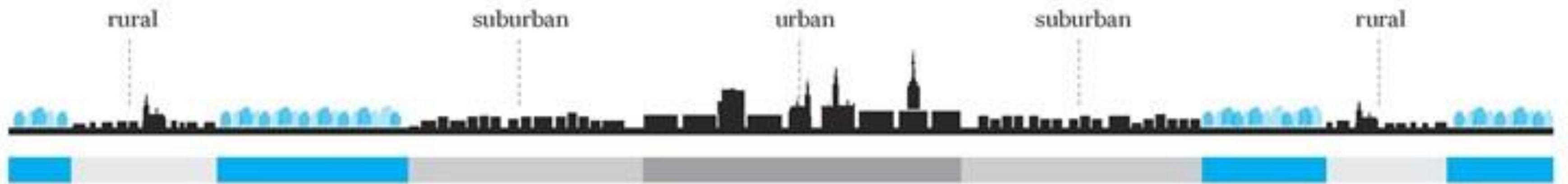
## **INVESTMENTS IN CREATIVE DEVELOPMENTS**

**HELP FROM EUROPE, BELGIUM, FLANDERS, LIMBURG**

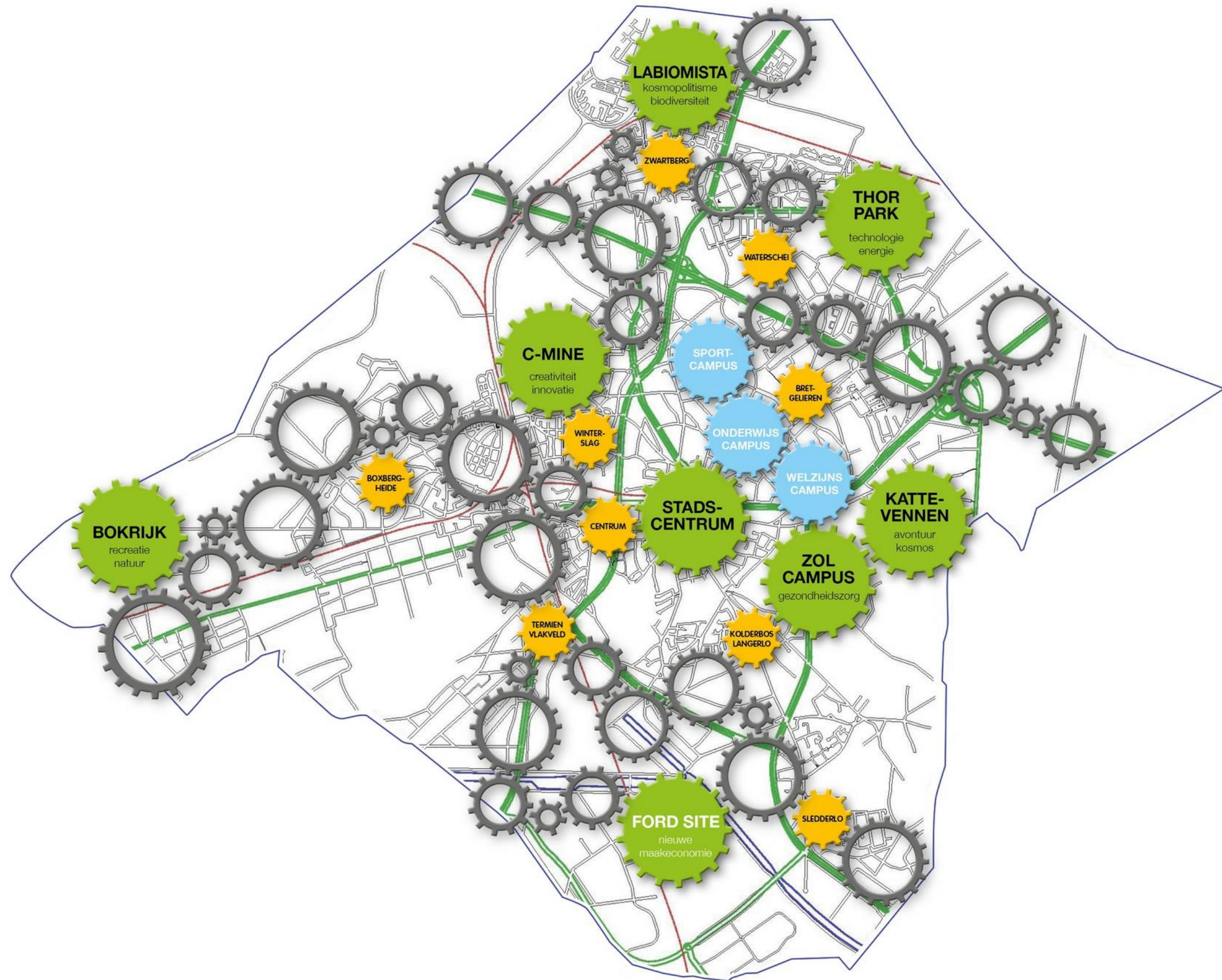
# NETWORK CITY CITY OF DRIVERS



# GENK, NETWORK CITY



# GENK, CITY OF DRIVERS





# CITY DEVELOPMENT

## RECONVERSION OF INDUSTRIAL SITES

1. C-mine
2. Thor Park
3. Labiomista

# 1. C - MINE



# C - MINE



FROM: COAL MINE

TO: CROSSROAD OF CREATIVITY & EXPERIENCES

4 PILLARS:

Creative economy:

C-mine Crib, creative business zones, events,...

Education:

LUCA School of Arts

Artistic creation & presentation:

Stage halls, exhibitions, room for meetings, ...

Creative - recreative:

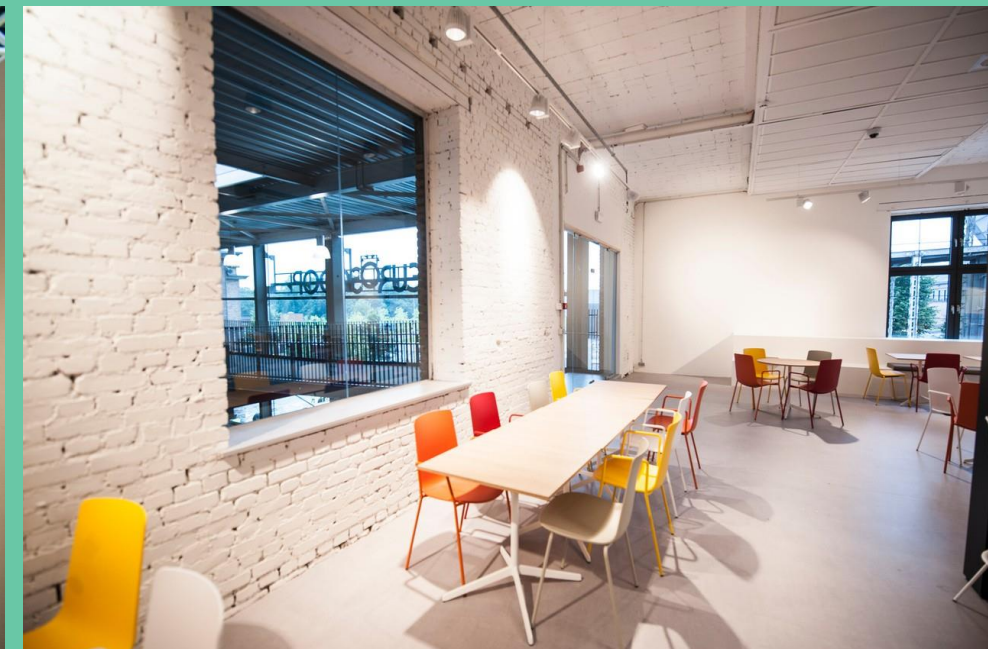
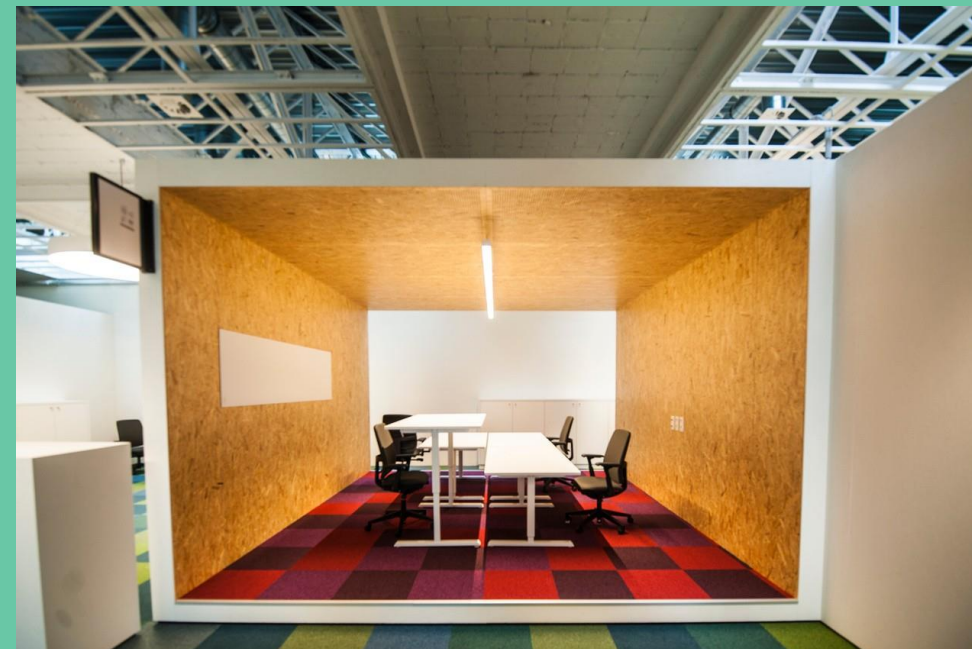
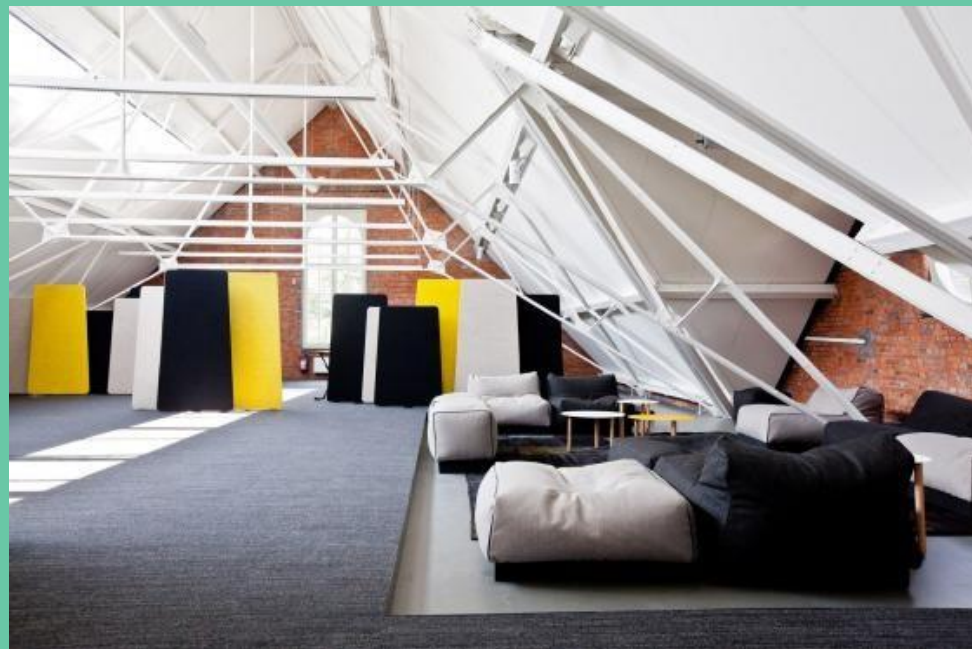
Tourism, cinemas, C-mine expedition, terril, cultural heritage

# C - MINE



## C-MINE CRIB

- Office space
- Flexible workspace
- Coworking space
- Meeting rooms



# 2. THOR PARK



FROM: COAL MINE

TO: TECHNOLOGY & RENEWABLE ENERGY

THOR -  
PARK

- Knowledge
- Economy
- Development of talents
- Lab for new insights
- Smart Cities





**T2-CAMPUS**

**URBAN PARK**  
Nature and recreation area — 30 ha

**ENERGYVILLE 1&2**

**TECHNOLOGY & TALENTCAMPUS**  
Technology- en talenteducation — 4,5 ha

**Smart manufacturing campus**

**THOR CENTRAL**

**INCUBATHOR**

**HIGH-QUALITY BUSINESS PARK**  
Business — 36,3 ha

**BUSINESS & ACTIVITY CENTRE**  
Business — 2,2 ha

**SCIENCE PARK**  
Research & development and business — 20 ha

# THOR- PARK



## INCUBATHOR:

- Incubator for businesses who focus on:
  - Smart Energy
  - Innovation
  - Technology
- The ideal operational base for starters, ambitious growth companies, and everything in between





# FUTURE: SMART MANUFACTURING CAMPUS - INDUSTRY 4.0

## THOR- PARK



# 3. LABIOMISTA



## DIVERSITY & COSMOPOLITISM

### LABIO - MISTA

- Villa OpUnDi
- Lab for biological & cultural diversity
- Touristic visits
- Park area - animals





# THANK YOU! QUESTIONS?



Mayor Wim Dries



[www.facebook.com/wimdries1](https://www.facebook.com/wimdries1)



@wimdries



[www.linkedin.com/wimdries](https://www.linkedin.com/wimdries)