



RESTART and Coal Regions Platform
Governance of transition in the Moravian-
Silesian Region of the Czech Republic
Zdenek Karasek and Karel Firla



MAIN CHALLENGES OF MORAVIAN-SILESIA REGION

Brain Drain

Population of 1,2 M expected to shrink by 250 000 citizens in 2050

Ageing

Population 65+ expected to double in 2050

Air pollution, brownfields

Among the most polluted areas in EU mostly in areas with high density of population

Low entrepreneurial intensity

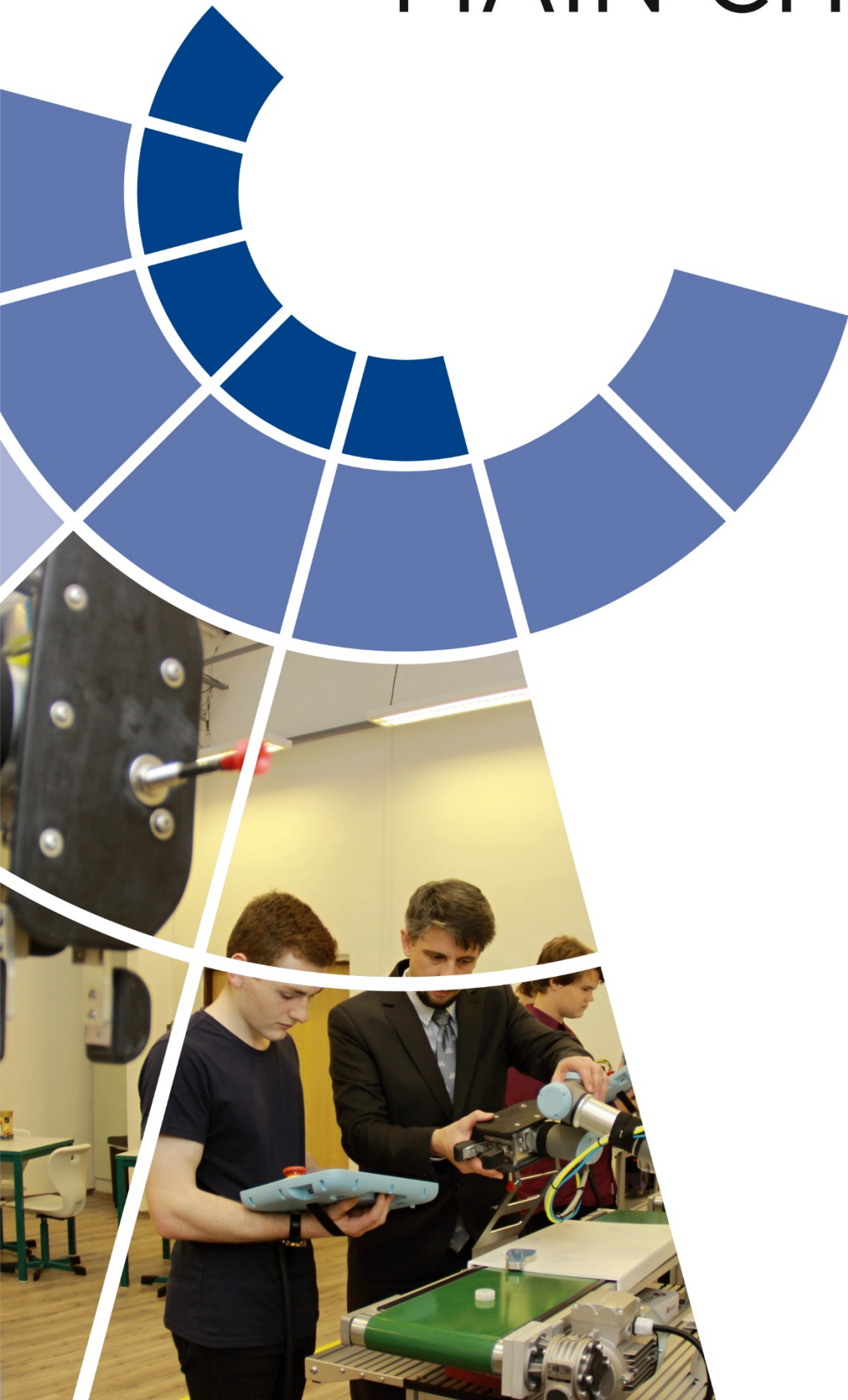
Lowest ratio of SME´s per 1000 habitants

Lack of skilled workforce, higher unemployment rates

Projected supply doesn´t correspond with the projected demand

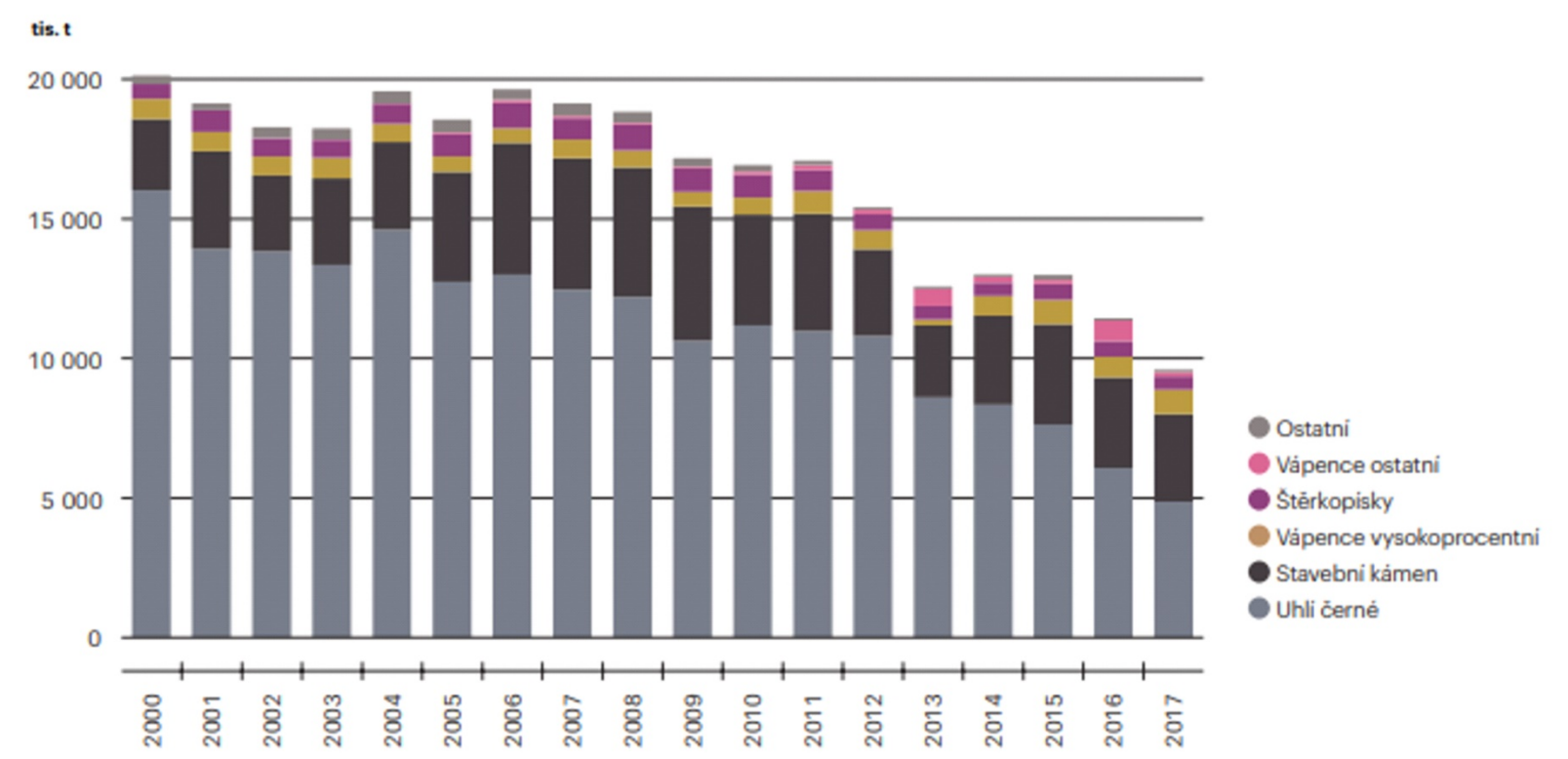
Vulnerability to the climate changes is increasing (heat, water, land use)
Territorial disparities

Global trends – Digitalization, Decarbonization, Suburbanization

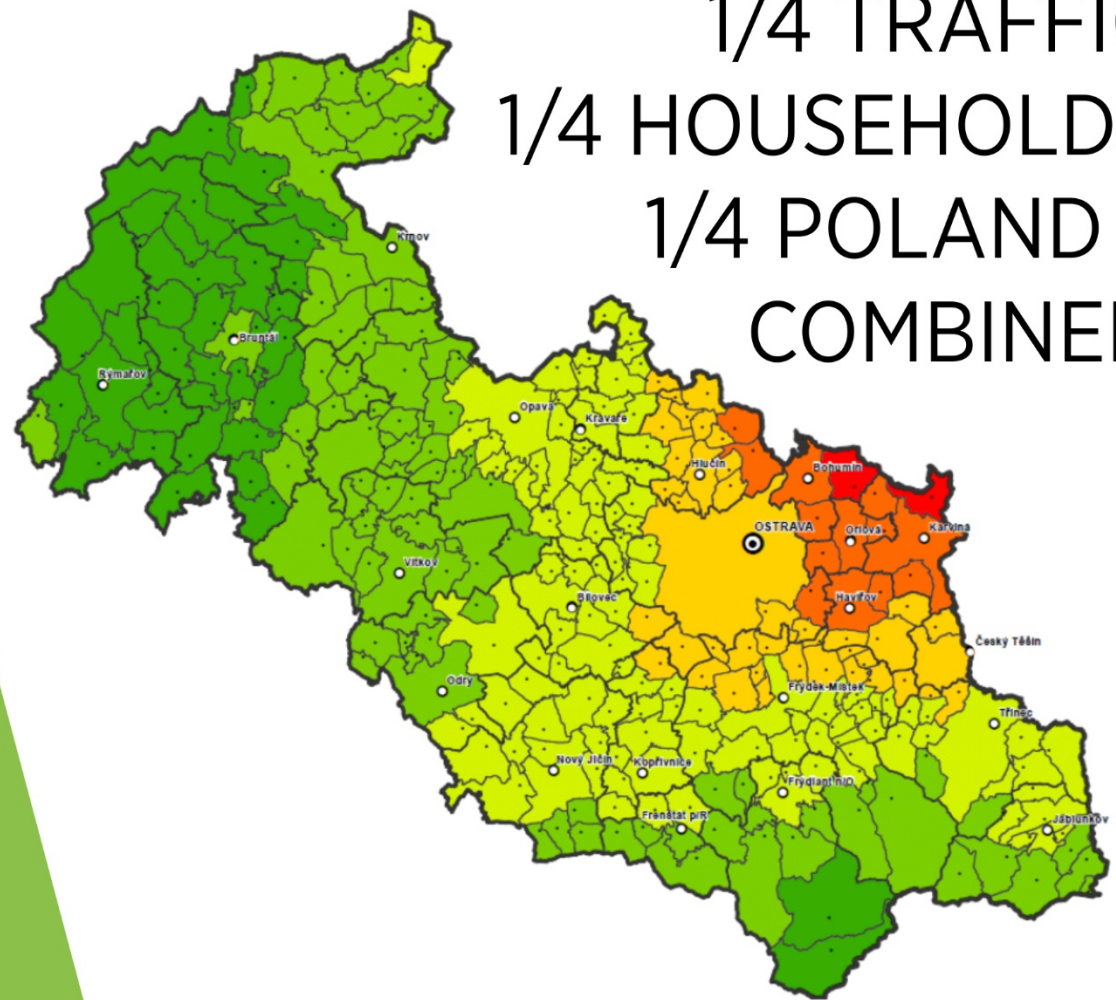


COAL MINING DECLINE, THOUSANDS OF TONS, 2000 - 2017

Vývoj těžby [tis. t], 2000-2017



AIR POLLUTION, 2015
 1/4 INDUSTRY
 1/4 TRAFFIC
 1/4 HOUSEHOLDS
 1/4 POLAND /
 COMBINED



EMPLOYED IN MINING SECTOR IN MS REGION



VISION 2024

NEW ENERGY FOR THE MORAVIAN-SILESIA REGION

The Moravian-Silesian Region will successfully conclude its economic transformation and return to being one of the development epicentres of the Czech Republic.

We will be a region where people want to stay or return to because of its favourable conditions for quality living. With the vibrant and attractive city of Ostrava at its centre, the region has a high population density and unique culture in a diverse range of regional cities and municipalities. The area is full of maintained vegetation and high-quality public spaces, surrounded by the picturesque Beskydy and Jeseníky mountains, which are easily accessible to both residents and visitors to the region.

Our region honours its industrial history and can place a value on it by smartly combining modern technologies and educated people. It is a region offering extraordinary opportunities to all those who put their hands, heads and hearts together, a region offering respectable conditions for anyone who has already done their share for society and wants to enjoy a well-earned rest.

Our region is not on the fringe but at the very centre of a strong, well-connected central European region cooperating with adjacent areas in Poland and Slovakia.

We want to bring new energy to our region under the following coalition programme for the 2016–2020 period, with an outlook on future years.



Hukvaldy



Jeseníky



Opava



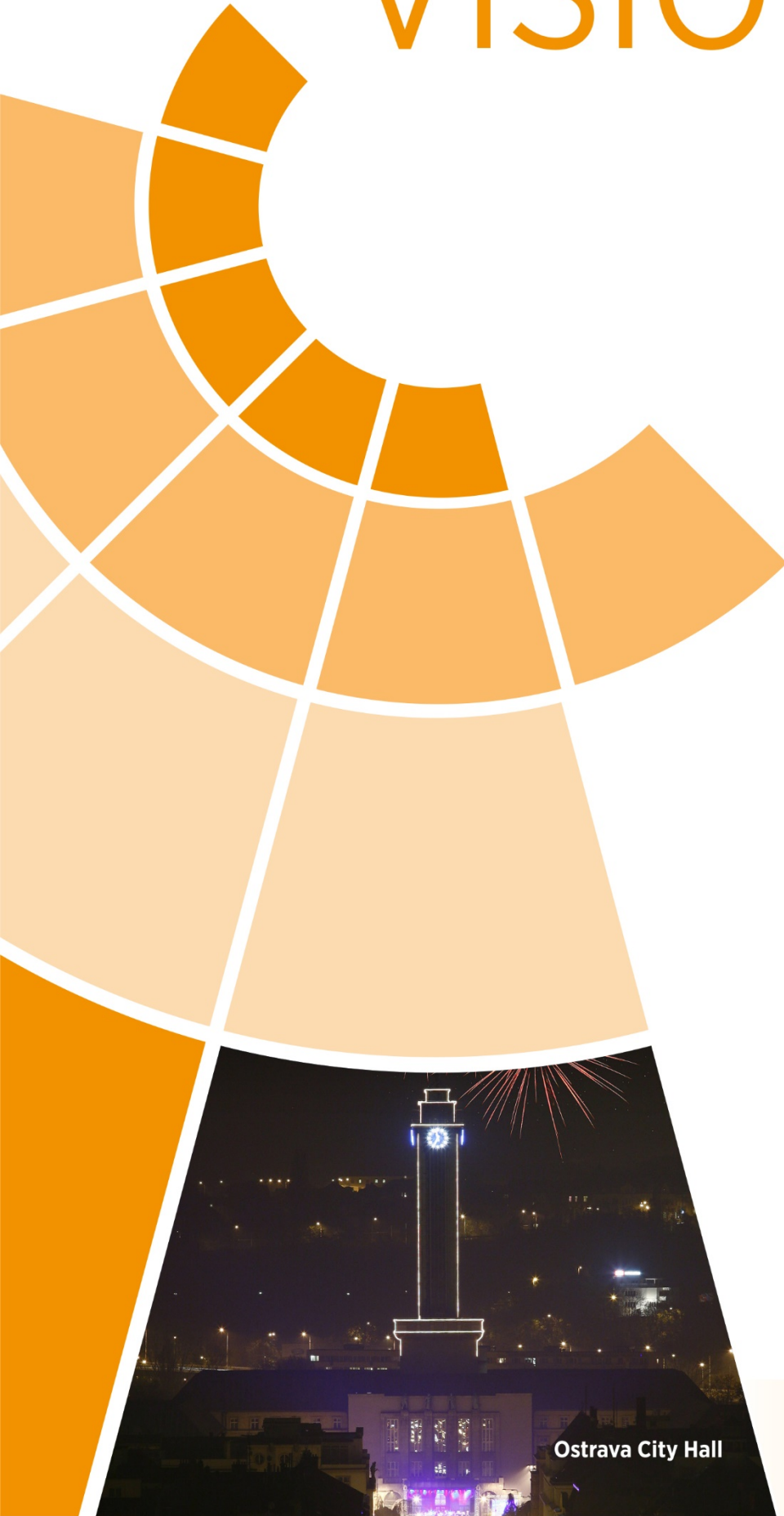
Ostrava



Fulnek



Dolní Lomná - bazaar



Ostrava City Hall



MORE ENTERPRISING AND ACTIVE REGION

Better links between business and science and research to improve the success rate of our companies on global markets—we will offer the cutting-edge **Moravian-Silesian Innovation Centre**.

We will create favourable conditions for business development, both for existing companies and incoming investors—we will develop the **MS Invest agency's services**.

We will provide information about supply and demand on the labour market and use it for career guidance and education of the population—we will use the **MS Employment Pact**.



We will be one of the top 3 regions in CZ (excluding Prague) in economic performance and entrepreneurship.



MORE EDUCATED REGION

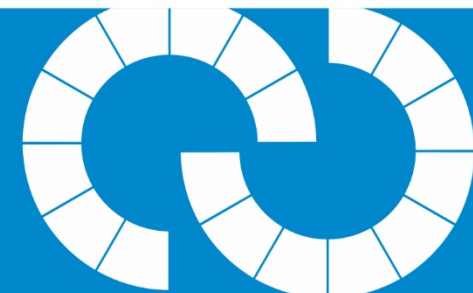
We will focus on improving the quality and relevance of education at schools and educational organisations in the region.

Specifically, we will support the development of technical education and building modern vocational centres for technical training.

We will improve the development of life skills and working in the 21st Century, such as communication in English, entrepreneurship and the use of modern technologies.



We want to be the best region in managing educational quality and supporting it in practice.



CLEANER REGION

We plan to reduce emissions to the level of valid Ostrava agglomeration limits and maintain air quality in other areas.

We will reduce the amount of biodegradable waste in landfills.

We will create the “**Clean MS Region**” programme, including the “**Clean Town in the MS Region**” competition.

We will overcome our image as a region with particularly polluted air.



Karviná – Božena Němcová Park



Bukovec



MORE ATTRACTIVE REGION

We will support the development of disadvantaged areas in the region—**Karvinsko, Bruntálsko and Vítkovsko.**

We will make better use of the **region's tourism potential**—landscape diversity and convenient location on the border with Poland and Slovakia.

We will improve cooperation with Ostrava in building attractions of supra-regional importance for residents and visitors to the region.

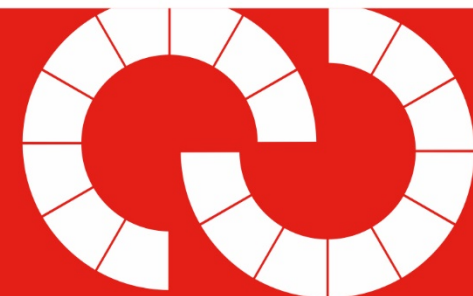


Bruntál – Chateau park



Karviná

We will build a reputation as a place well equipped for active living for its citizens and an attractive tourist destination.



WEALTHIER REGION

We will ensure **the responsible and transparent** management of regional resources.

We will ensure **adequate resources for co-financing** useful EU projects.

We will strive to **modernise the region's** assets to achieve operational savings.



We will be a financially secure region with strong development investment dynamics.



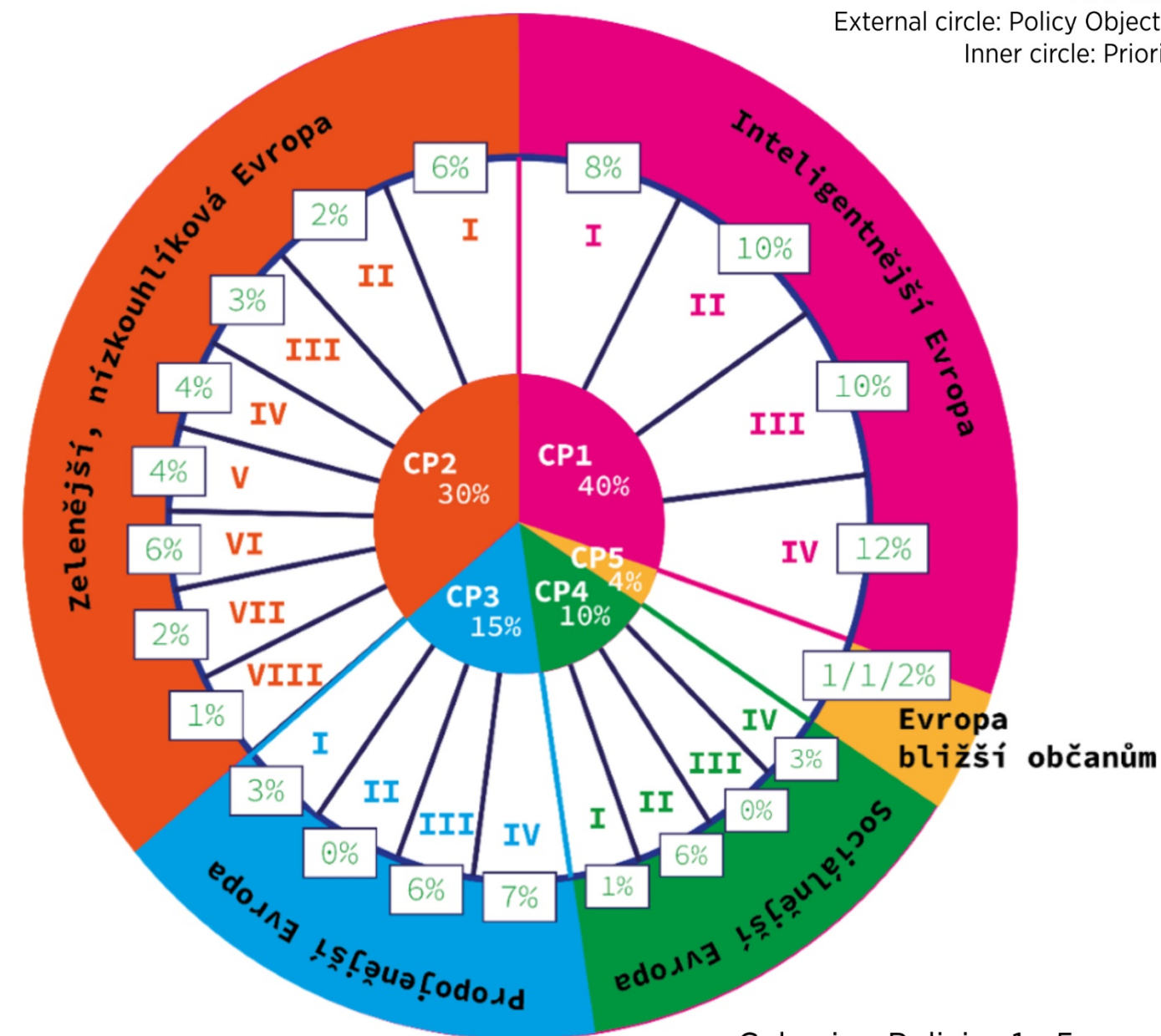
MS REGION POSITION ON PROGRAMMING PERIOD 2021 - 2027

Our priorities are aligned with European regulatory framework.

We are ready to be integral part of implementation structure:

**Operational programme
or
Integrated Territorial Development**

Legend
ESIF 2021 +
External circle: Policy Objectives
Inner circle: Priorities



- Cohesion Policies 1 - 5
- Smarter Europe
 - Greener, carbon free Europe
 - A more connected Europe
 - A more social Europe
 - Europe closer to citizens



Governance model of the Moravian-Silesian Region with regard to RESTART and Coal Platform programs

- STRATEGIC LEVEL

Steering Committee for the Transformation of the Moravian-Silesian Region

Composition:

- Governor of the MS + 4 Deputy Governors; 6 Mayors of cities (Ostrava, Karvina, Havírov, Opava, Frýdek Místek and Trinec); 1 Government Deputy and the Chairman of MS Region Tripartite + 1 member of the European Parliament as permanent participant

Permanent Regional Conference (PRC) extended by representatives of the Regional Council of Economic and Social Agreement (tripartite)

- PRC is a **platform for the involvement of key actors in the territory**, regarding the preparation and the evaluation of the Strategy Action Plan. PRC discusses relevant documents and reports on preparation and implementation.

Governance model of the Moravian-Silesian Region with regard to RESTART and Coal Platform programs

- EXECUTIVE LEVEL

Governor's Deputy for the RE:START and the Coal Platform

Role:

- Ensures the coordination of activities at MS Region level;
- Cooperates with the PRC Secretariat + MSID Managing team;
- Reports to the Governor, to the Steering Committee and to PRC;
- Participates in/represents the Governor in relevant meetings at national and EU level (together with the Ministry of Regional Development (MRD), the EC and with the Coal Platform Secretariat)

Governance model of the Moravian-Silesian Region with regard to RESTART and Coal Platform programs

Permanent Regional Conference Secretariat

- Activities related to PRC, activities of the Office of the Special Representative of the Government related to the RE:START Programme and the Coal Platform (CP);
- Information on other Partners within the MS Region;
- Information gathering on new project ideas;
- Cooperation with MSID - Managing Authority

Regional Experts in working groups related to RESTART main pillars:

- A. Pillar “Entrepreneurship”
- B. Pillar “Investments”
- C. Pillar “Science and Research”
- D. Pillar “Human Resources”
- E. Pillar “Social Stabilization”
- F. Pillar “Environment”
- G. Pillar “Infrastructure and Public Administration”

Governance model of the Moravian-Silesian Region with regard to RESTART and Coal Platform programs

► **Regions / Coal Platform Regions in the Czech Republic**

- 14 regions in the Czech Republic / 8 NUTS II regions;
- 3 regions (MS, Ustecky and Karlovy Vary) are active in the Coal Platform;
- NUTS II Severozapad Region (Karlovy Vary + Usti);
- NUTS II Moravskoslezsko;
- Strong differences and disbalances between regions;
- Different historical background/heritage;
- Different political/organizational structure;
- Impact of neighbouring countries' regions;
- Karlovy Vary Region + Usti Region/Bavaria + Saxony;
- Moravian-Silesian Region/Poland + Slovak Republic

➤ **Moravian-Silesian Region – key challenges related to RE:START/CP**

- Environment;
- Energy/energy intensive industry;
- Large companies (Arcelor Mittal, OKD, Vítkovice, Třinecké železárny, Hyundai, etc.);
- Land ownership;
- Brownfields/damaged landscape after mining/industrial activities;
- Large infrastructure projects
- Restructuring/SMEs/Start-ups;
- Retraining/changing skills;
- Brain drain

► **Moravian-Silesian Region – our homework related to RE:START/CP**

- Communication with relevant managing Authorities, e.g. with the Ministry of Regional Development/Ministry of Industry and Trade, Ministry of Social Affairs, Ministry of Education and other relevant stakeholders;
- Cooperation with Ústecký and Karlovarský Regions;
- „Leadership“/Technical support to both regions (strategy, drafting documents, project preparations, etc.);
- Coordination/know-how sharing in areas of common interest:
 - Environment
 - Energy
 - Brownfields/damaged landscape after mining/industrial activities
 - Land ownership solutions
 - Large companies

► **Moravian-Silesian Region – our homework related to RE:START/CP**

- Joint action in negotiations with the EC and the EU;
- Cooperation at project level, e.g.:
 - CEET (Centre for Energy and Environment Technologies) in Ostrava, MS Region – cooperation with Ustí Region and other relevant institutions within the Czech Republic (International cooperation)
 - Project Mining pit sites and Collieries reclamation project of Landscape after coal mining, MS Region – cooperation with Ustí Region
- Verification, whether there are similar projects to existing ones (projects within the CP project pipeline in the Czech Republic) that would compete with each other;
- Effective/coordinated use of existing operational programmes/other available tools and procedures in the Czech Republic for project funding

► **Moravian-Silesian Region – what do we expect from the EC/EU, related to RE:START/CP**

We are asking for support/help with following key topics:

- Support to large companies;
- Support to finding solutions to land ownership issues;
- Support regarding brownfields/landscape after mining/industrial use;
- The set up of an effective communication structure between the Czech Republic (MS + Ustí + Karlovy Vary Regions) and the EC related to projects within the RE:START/CP pipeline, based on areas of interests (energy, transport, social affairs, etc.);
- The set up an effective communication structure between project managers in CP regions in the Czech Republic and project managers in other EU Member States (e.g. the CEET project);
- Help us with project managers from other EU Member States, which are experienced in large infrastructure projects under RE:START/CP;
- Help to create/find out integrated/flexible/complex tools to deal with large infrastructure projects (ITI style) under RE:START/CP.

► Moravian-Silesian Region – conclusions

We consider the active participation in Coal Platform for Regions in Transition to be an excellent tool, mainly to:

- Be able to create and submit large integrated project for complex transition solutions
- Understand the real needs of Coal Regions in Transition;
- Identify and understand the complexity of all key problematic topics (such as land ownership, brownfields, landscape after mining/industrial use etc.), which are blocking/delaying the transition process;
- Look for effective solutions and use/reallocation of EU funding within EU Member States;
- Profit from effective communication with the EC/other EU Member States to build national/international (European) projects, which will complement each other;
- See this project as a practical way to prepare the Czech Republic (MS + Ústi + Karlovy Vary Regions) for the next planning period (2021 – 2027).

THANK YOU FOR YOUR ATTENTION



Moravian-Silesian
Region

