

Coal Regions in Transition



4th Working session

9 April

Hard coal

- **Deep** mining 500-1000 m
- Land **declination** – up to 50 m
- Mining **gas** outflow
- Mining **heaps**, sludge **lagoons**
- Derelict and **low quality areas**
- Many **individual sites**
- **Fragmented ownership**

SURFACE IS STILL THERE

Lignite

- **Surface** mining 300 m
- **Continuous area of opened** mining pits
- Land **slides**
- Landscape **vanished**
- All settlement and infrastructure **demolished**
- areas of **single ownership**

SURFACE HAS DISAPPEARED

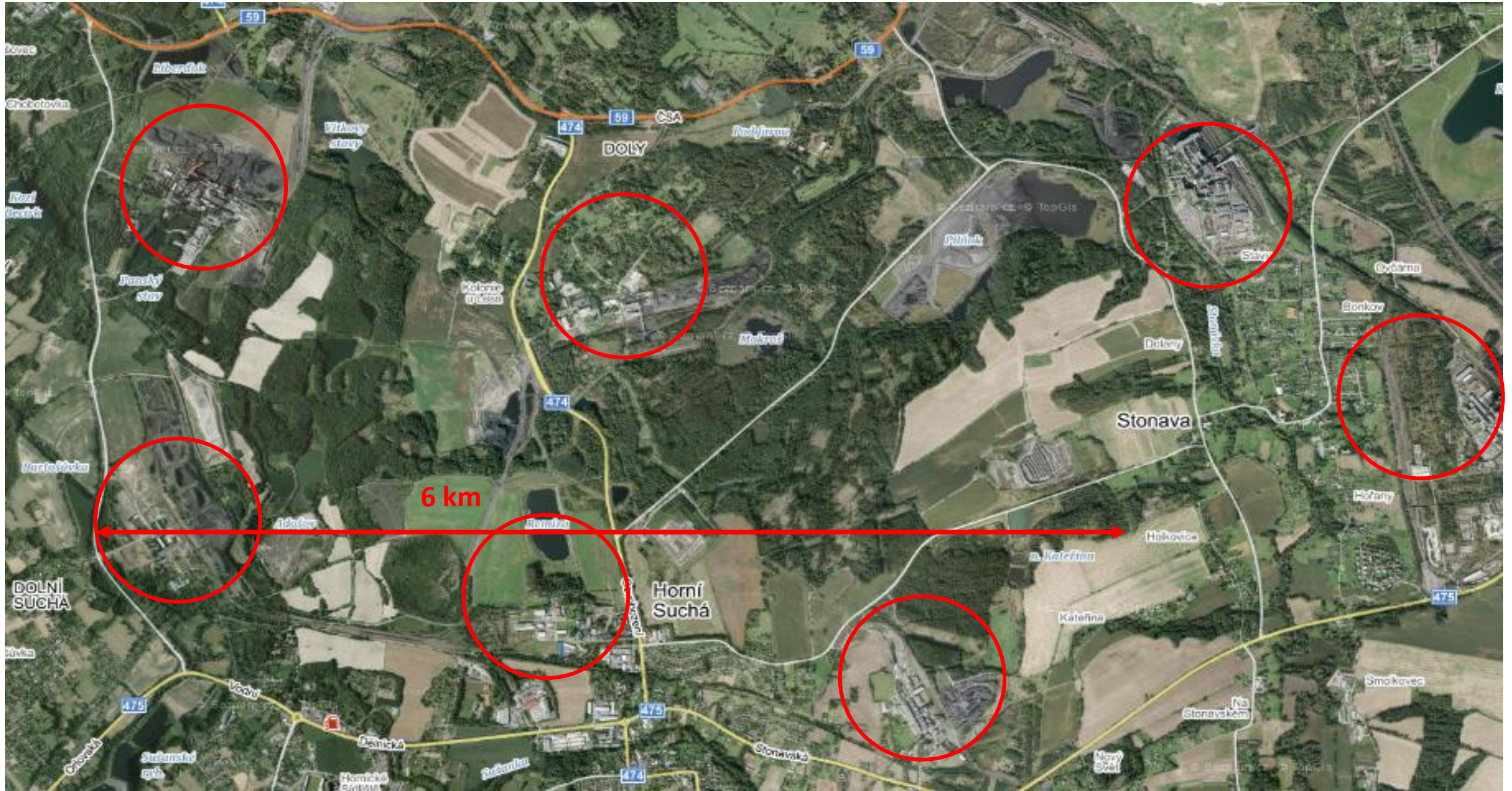


Different approach to reclamation and resocialization
Continuous project of landscape improvement is including after use project

Northern Bohemia - Lignite mining landscape

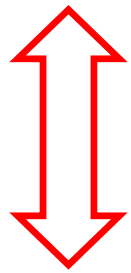


Moravia-Silesia: Hard coal mining landscape



A - Environment

- Water management
- Agricultural and forestry
- Fauna, Flora



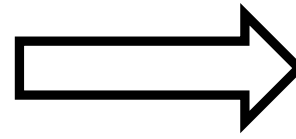
- **Absence of „on-time“ long term planning**
- **Disharmony of Legislation**
- **Absence of common municipal political interests**
- **Too complex and long term problem**
- **Lack of initial funding**

B – Development – new uses to

- Support economy
- Improve social image
- Prevent negative behaviour (derelict land)



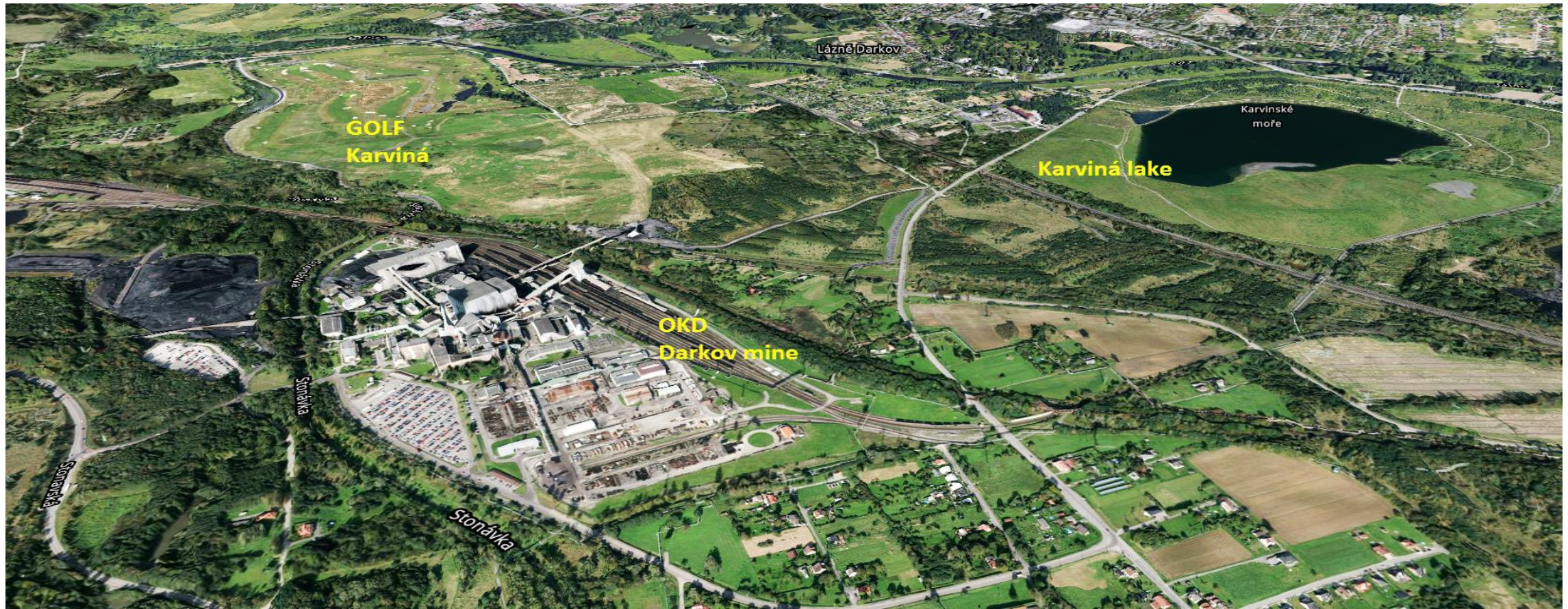
Area potential



Needs

- Environment, recreation
- Water retention
- New energy sources – mine gas, hydroenergy, photovoltaic, geothermal
- Leisure, Sports, Industry

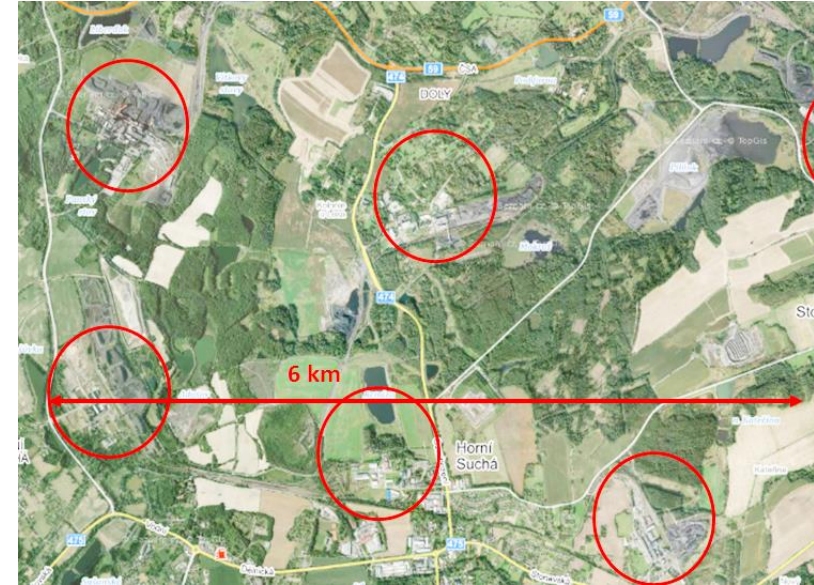
- Strategic masterplan
- New image
- Improving infrastructure
- Funding
- Awareness, Learning



Development of new land uses – up to 10 projects

Samples from Moravia – Silesia

- Area of interest approx. 8x4km, not populated (in-between towns)
- Fragmented landscape and ownership
- Projects - islands of life (anchor projects) using
 - collieries
 - mining heaps
 - lakes
- Individual solutions
- Timing of projects from the intention to opening 3 -10 years



LEGISLATION AND PLANNING

- Reclamation process – in all cases the original target was amended to suit new uses
- Municipal Zoning plans – part of the process in all cases (**absence of long term plans**)
- Protected species – issue present in all projects
- Ownership issues – always part of the projects
 - State transfer to municipality,
 - Private land granted to municipality to cooperate on the development,
 - Private land leased out to municipality / operator



Dukla colliery before and after
2007 - 2014



LAND TECHNICAL ISSUES AND FUNDING

- Basic reclamation is performed by the mining company (according to mining Law)
- Land contamination issues – not present in any project, problems with illegal waste tips
- Funding of „lucky projects“ – Initial phases funded by the land owner (risk elimination)
- Technical issues related to mining activities in all projects mine gas, declinations, land slides etc.
- Infrastructure and land preparation phase – national funding for development of former mining sites (reclamation)
- Development – mostly private funding, sometimes combined with EU (subject to eligibility and political will)



Karviná lake reclamation 1994-2016



IMPACT AND IMAGE

WE HAVE

- Minor issue of primary mining damages (covered by mining companies)
- Anchor projects to be followed up
- Some development – commercial and recreation
- Existing and some new infrastructure

BUT

- Too large and complex topic for one election period
- Slow process of restructuring
- Lack of strategic steps to improve image
- Underestimated potential of the area by officials
- Sometimes too high expectations of private asset owners

RESTART and the Coal Platform help to form the strategy plus implement significant projects



Franisek colliery before and after 1998 - 2010



RE:START initiated program RESOCIALIZATION of post mining areas

- Prepared by Ministry of Regional Development
- Now in discussion - type of funding: National or with involvement of EU funding
- Area eligible to funding was agreed in both regions
- Strategic projects in preparation in both regions
 - North-West - Usti and Karlovy Vary - Ready projects for resocialization of lakes
 - Energetic use of hydric power to replace closed coal energy sources
 - Leisure and recreation
 - Moravia-Silesia region – Strategy for Mining pit and Colliery resocialization
 - Identifying main areas of intervention
 - Proposing Area masterplan
 - Discussions with stakeholders
 - Projects development

1 – Targeted definition of projects (synergy and eligibility)

- Support to create large project vehicles
- Public – private partnership incl. ownership solutions

2 - Sharing of know how for

- the image improvement
- sustainable planning
- long term project management
- political communication

3 – EU Co-funding for

- initial project phases
- public awareness
- **territorial strategy based on RE:START for integrated investments, to change the post-mining areas**





Thank you

Eva Spasovová
spasovova@mskec.cz
+420-723557070

Lukáš Adámek
adamek@msid.cz
+420- 720030080