

| In national currency | | | | | |
|----------------------|------------------------------|-------------------------------------------------------------------------------|---------------------------------------------------------------------|----------------------------------------------------------------------------------------------------------------|-------------------------------------------------------------------------------------------------------------|
| | Euro-super 95 (I) | Gas oil automobile Automotive gas oil Dieselkraftstoff (I) | Gas oil de chauffage Heating gas oil Heizöl (II) | Fuel oil - Schweres Heizöl (III) Soufre <= 1% Sulphur <= 1% Schwefel <= 1% | Fuel oil - Schweres Heizöl (III) Soufre > 1% Sulphur > 1% Schwefel > 1% |
| | 1000L | 1000L | 1000L | t | t |
| Bulgaria (BGN) | 951.00 | 976.00 | 1,002.00 | | 805.00 |
| Czech Republic (CZK) | 13,307.50 | 14,501.67 | 12,454.17 | 8,460.00 | |
| Denmark (DKK) | 4,122.00 | 4,371.00 | 4,693.20 | 2,934.00 | |
| Estonia (EEK) | 7,801.67 | 8,265.33 | 7,741.50 | | |
| Hungary (HUF) | 149,063.95 | 161,405.06 | 161,405.06 | 109,802.08 | |
| Latvia (LVL) | 374.58 | 407.58 | 407.58 | | |
| Lithuania (LTL) | 1,823.95 | 1,936.63 | 1,783.20 | | 1,161.89 |
| Poland (PLN) | 2,019.87 | 2,223.74 | 2,081.11 | 1,733.00 | 1,370.00 |
| Romania (RON) | 2,250.59 | 2,469.29 | 1,942.03 | 1,975.05 | |
| Sweden (SEK) | 4,424.00 | 5,149.00 | 4,675.20 | 4,009.02 | |
| United Kingdom (GBP) | 405.44 | 430.61 | 414.11 | | |

| En/In EURO | | | | | |
|-------------------------------------------------------------------------------------------------------------------|------------------------------|-------------------------------------------------------------------------------|---------------------------------------------------------------------|----------------------------------------------------------------------------------------------------------------|-------------------------------------------------------------------------------------------------------------|
| | Euro-super 95 (I) | Gas oil automobile Automotive gas oil Dieselkraftstoff (I) | Gas oil de chauffage Heating gas oil Heizöl (II) | Fuel oil - Schweres Heizöl (III) Soufre <= 1% Sulphur <= 1% Schwefel <= 1% | Fuel oil - Schweres Heizöl (III) Soufre > 1% Sulphur > 1% Schwefel > 1% |
| | 1000L | 1000L | 1000L | t | t |
| Austria | 495.74 | 539.65 | 531.43 | 368.00 | |
| Belgium | 526.02 | 565.71 | 510.11 | 347.99 | |
| Bulgaria | 486.25 | 499.03 | 512.32 | | 411.60 |
| Cyprus | 558.52 | 583.15 | 582.31 | 514.87 | |
| Czech Republic | 543.85 | 592.65 | 508.98 | 345.74 | |
| Denmark | 552.98 | 586.39 | 629.61 | 393.61 | |
| Estonia | 498.62 | 528.25 | 494.77 | | |
| Finland | 549.06 | 608.09 | 560.80 | | |
| France | 493.05 | 524.86 | 539.47 | 376.31 | |
| Germany | 486.68 | 546.41 | 527.94 | | |
| Greece | 524.24 | 634.68 | 505.73 | 408.52 | |
| Hungary | 547.59 | 592.92 | 592.92 | 403.36 | |
| Ireland | 524.40 | 558.90 | 644.14 | 266.13 | |
| Italy | 556.05 | 586.73 | 581.87 | 391.47 | |
| Latvia | 528.17 | 574.70 | 574.70 | | |
| Lithuania | 528.25 | 560.89 | 516.45 | | 336.51 |
| Luxembourg | 519.86 | 549.25 | 510.36 | | |
| Malta | 570.09 | 562.85 | 504.69 | 497.98 | |
| Netherlands | 516.23 | 537.93 | 434.88 | 330.94 | |
| Poland | 511.58 | 563.21 | 527.09 | 438.92 | 346.98 |
| Portugal | 532.75 | 590.96 | 554.31 | 513.27 | |
| Romania | 526.34 | 577.49 | 454.18 | 461.90 | |
| Slovakia | 541.80 | 577.38 | 665.00 | 365.00 | 358.36 |
| Slovenia | 513.47 | 540.09 | 504.06 | 413.00 | |
| Spain | 536.12 | 579.70 | 508.89 | 412.39 | |
| Sweden | 478.80 | 557.26 | 505.98 | 433.89 | |
| United Kingdom | 468.39 | 497.47 | 478.41 | | |
| CE/EC/EG EUR 27 (IV) Moyenne pondérée Weighted average Gewichteter Durchschnitt | 507.43 | 555.01 | 532.85 | 405.15 | 361.00 |
| CE/EC/EG Euro Area 16 (€) (V) Moyenne pondérée € Weighted average € Gewichteter Durchschnitt € | 515.91 | 560.21 | 532.43 | 402.56 | 358.36 |

| Other petroleum products | In National Currency | In/En EURO |
|--------------------------|-------------------------|------------|
|--------------------------|-------------------------|------------|

Lead Substitute Petrol (1000L) (I)

| | | |
|----------------------|-----------|--------|
| Czech Republic (CZK) | 13,225.83 | 540.51 |
| Greece (EUR) | | 609.52 |

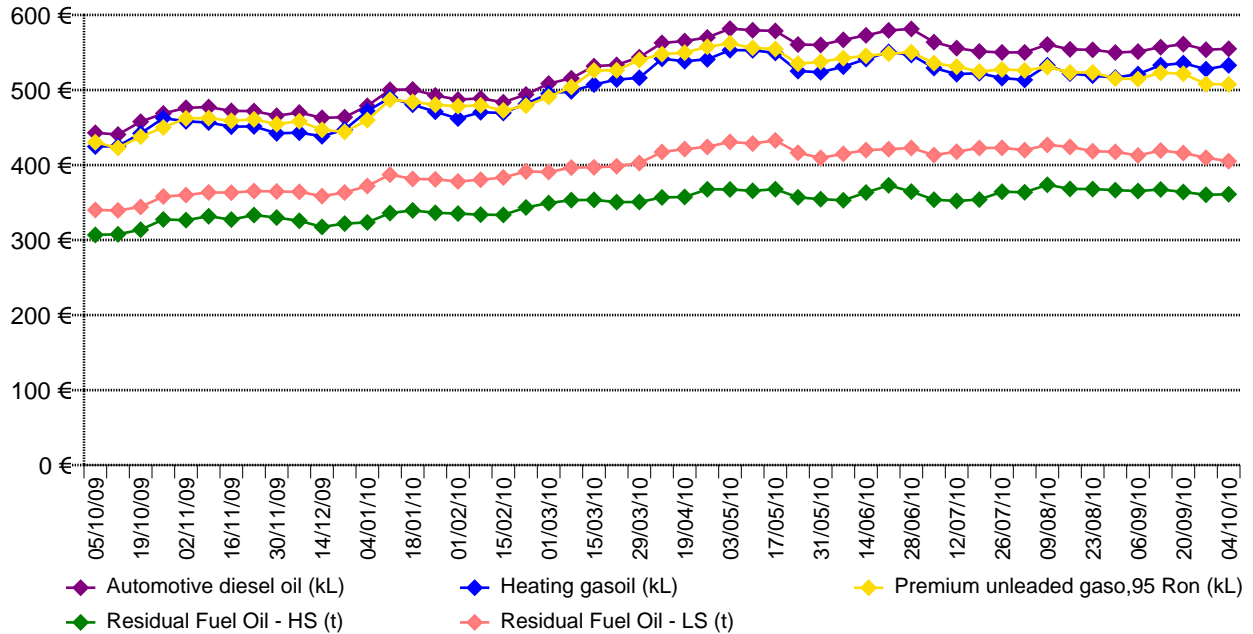
LPG - motor fuel (1000L) (I)

| | | |
|----------------------|------------|--------|
| Belgium (EUR) | | 485.12 |
| Bulgaria (BGN) | 754.00 | 385.52 |
| Czech Republic (CZK) | 9,788.33 | 400.03 |
| Estonia (EEK) | 7,156.00 | 457.35 |
| France (EUR) | | 571.87 |
| Germany (EUR) | | 422.79 |
| Hungary (HUF) | 132,818.07 | 487.91 |
| Italy (EUR) | | 420.37 |
| Latvia (LVL) | 223.22 | 314.75 |
| Lithuania (LTL) | 1,124.81 | 325.77 |
| Luxembourg (EUR) | | 453.61 |
| Netherlands (EUR) | | 513.83 |
| Poland (PLN) | 1,396.28 | 353.64 |
| Portugal (EUR) | | 508.16 |
| Romania (RON) | 1,604.84 | 375.32 |
| Slovakia (EUR) | | 420.17 |
| Slovenia (EUR) | | 504.71 |
| Spain (EUR) | | 477.04 |

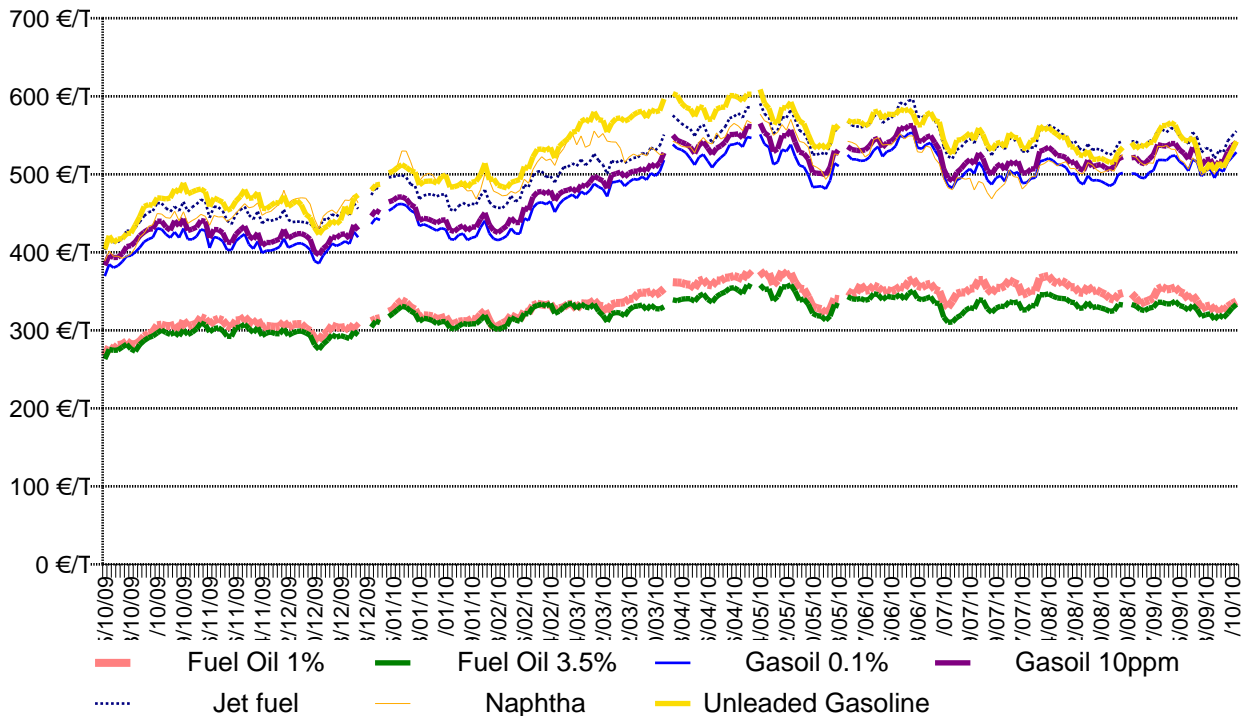
Standard Grade Burning Oil UK (1000L) (II)

| | | |
|----------------------|--------|--------|
| United Kingdom (GBP) | 416.52 | 481.19 |
|----------------------|--------|--------|

PRIX A LA CONSOMMATION DES PRODUITS PETROLIERS (hors droits et taxes) - MOYENNE PONDEREE - EUR 27
CONSUMER PRICES OF PETROLEUM PRODUCTS (Net of duties and taxes) - WEIGHTED AVERAGE - EUR 27
VERBRAUCHERPREISE FÜR MINERALÖLERZEUGNISSE (ohne Steuern und Abgaben) - GEWICHTETER DURCHSCHNITT - EUR 27



PRIX SPOT DES PRODUITS PETROLIERS (Platts) - COTATIONS DE ROTTERDAM FOB
SPOT OIL PRODUCTS PRICES (Platts) - ROTTERDAM QUOTATIONS-BARGES FOB
SPOT-PREISE MINERALÖLERZEUGNISSE (Platts) - ROTTERDAM NOTIERUNGEN FOB



| Euro exchange rate | | |
|--------------------|-----|-----------|
| Bulgaria | BGN | 1.95580 |
| Czech Republic | CZK | 24.46900 |
| Denmark | DKK | 7.45410 |
| Estonia | EEK | 15.64660 |
| Hungary | HUF | 272.22000 |
| Latvia | LVL | 0.70920 |
| Lithuania | LTL | 3.45280 |
| Poland | PLN | 3.94830 |
| Romania | RON | 4.27590 |
| Sweden | SEK | 9.23980 |
| United Kingdom | GBP | 0.86560 |

- (I) Pump prices
- (II) Delivered consumer prices for deliveries of 2 000 to 5 000 litres (for offtakes of less than 2 000 litres the industrial sector may be taken into consideration)
- (III) Delivered consumer prices for offtakes of less than 2 000 tonnes per month or less than 24 000 tonnes per year (for Ireland, deliveries of 500 to 1 000 tonnes per month)

The prices inclusive of duties and taxes are VAT excluded

- (IV) Average resulting from the weighting of the quantities consumed during the year 2008 (EUR 27/EUR 25)
- (V) Average resulting from the weighting of the quantities consumed during the year 2008 (EUROLAND)



EUROPEAN COMMISSION
Directorate-General for Energy

Prix en vigueur au
Prices in force on
Preise geltend am

Prix à la consommation des produits pétroliers hors droits et taxes
Consumer prices of petroleum products net of duties and taxes
Verbraucherpreise für Mineralölzeugnisse ohne Abgaben und Steuern

4/10/2010

The prices communicated by the Member States are the prices most frequently charged, based on a weighted average.

Comparisons between prices and price trends in different countries shall be carefully made. They are of limited validity because of differences in product quality, in marketing practices, in market structures, and to the extent that standard categories are representative of the total sales of a given product.

Information concerning subscriptions to the Oil bulletin : e-mail : ener-oil-bulletin@ec.europa.eu

Disclaimer

This oil bulletin prepared by the European Commission aims at enhancing public access to information about petroleum product prices within the Members States of the European Union. Our goal is to keep this information timely and accurate. If errors are brought to our attention, we will try to correct them.

However the Commission accepts no responsibility or liability whatsoever with regard to the information on this publication.

Copyright notice

Reproduction is authorised provided the source is acknowledged.

© European Communities, 2010