



European
Commission

Coal Regions in Transition Initiative: Outlook and Progress towards a Just Transition

Just Transition Platform Meeting: Coal
Regions in Transition virtual week and
Carbon-intensive regions seminars

10 May 2022



Welcome remarks

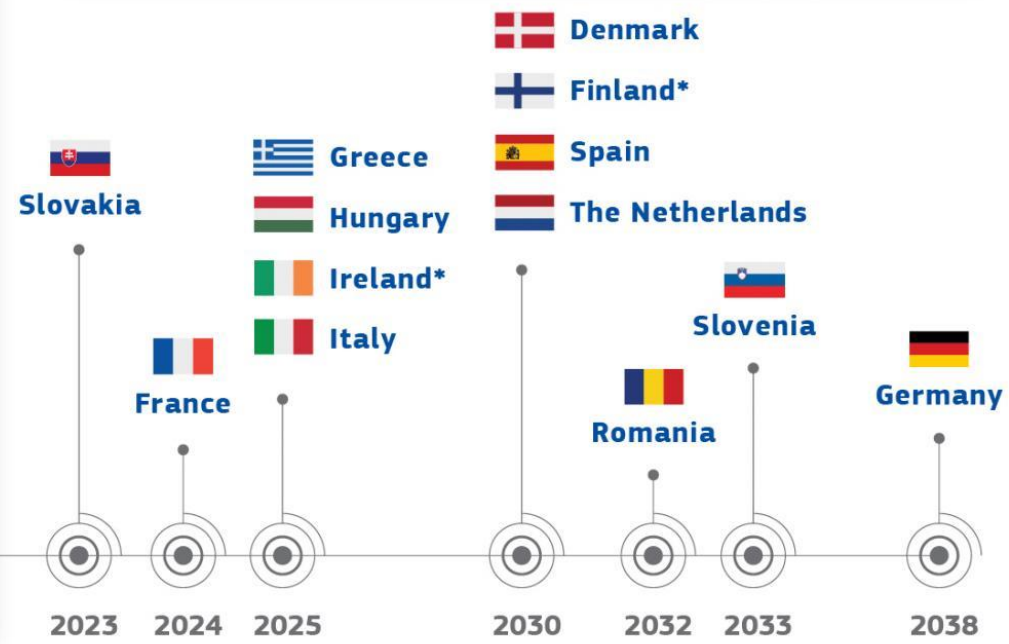
Paula Pinho

Director for Just Transition, Consumers, Energy Efficiency
and Innovation in the Directorate-General for Energy,
European Commission



Coal phase-out commitments in the EU

-  **Austria**
 -  **Belgium**
 -  **Cyprus**
 -  **Estonia***
 -  **Latvia**
 -  **Lithuania**
 -  **Luxembourg**
 -  **Malta**
 -  **Sweden**
 -  **Portugal**
- Coal-free as of 2021**



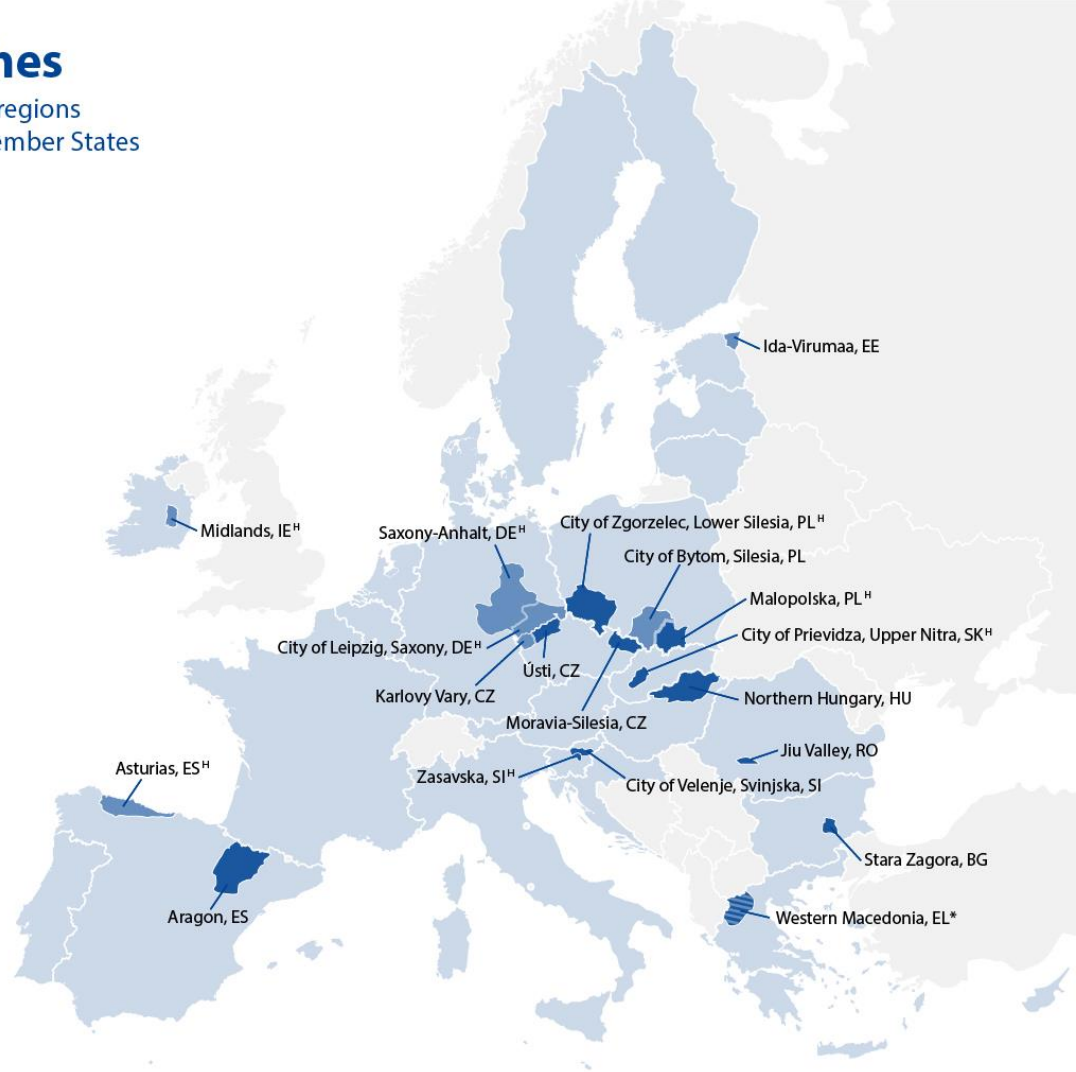
- Phase-out under consideration**
-  **Bulgaria**
 -  **Croatia**
 -  **Czech Republic**
 -  **Poland**

* Member States with peat and oil shale in their energy mix.

results of the 1st Call

8 matches

with 19 coal+ regions
from 12 EU Member States



(2nd Call in autumn 2022)



European
Commission

Annual Political Dialogue on 7-8 July in Oviedo, Asturias (Spain)

The event will feature high-level political discussions, roundtables of key just transition issues, discussions on the role of EU coal regions in a fast-changing energy world and how to make sure they thrive in new environments, and much more.

Agenda and registration links will be made available soon.



Jörg Steinbach

Minister for Economic Affairs, Labour and Energy, State of
Brandenburg, Germany

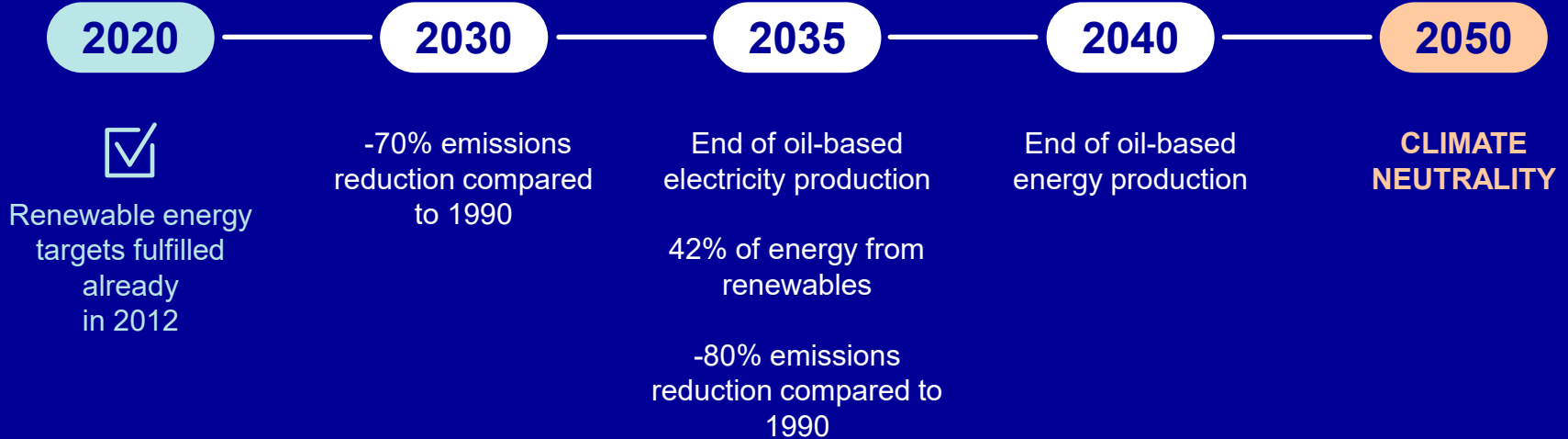




Ida-Viru
Just Transition

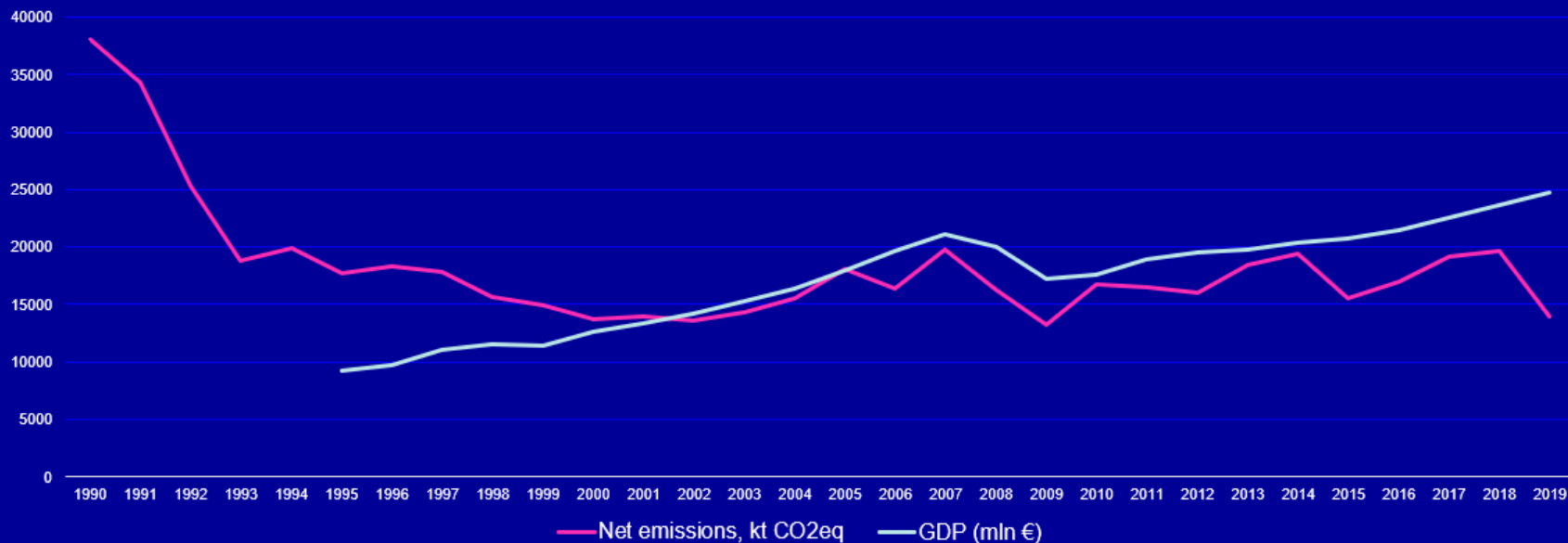
Plans and
Challenges

climate goals



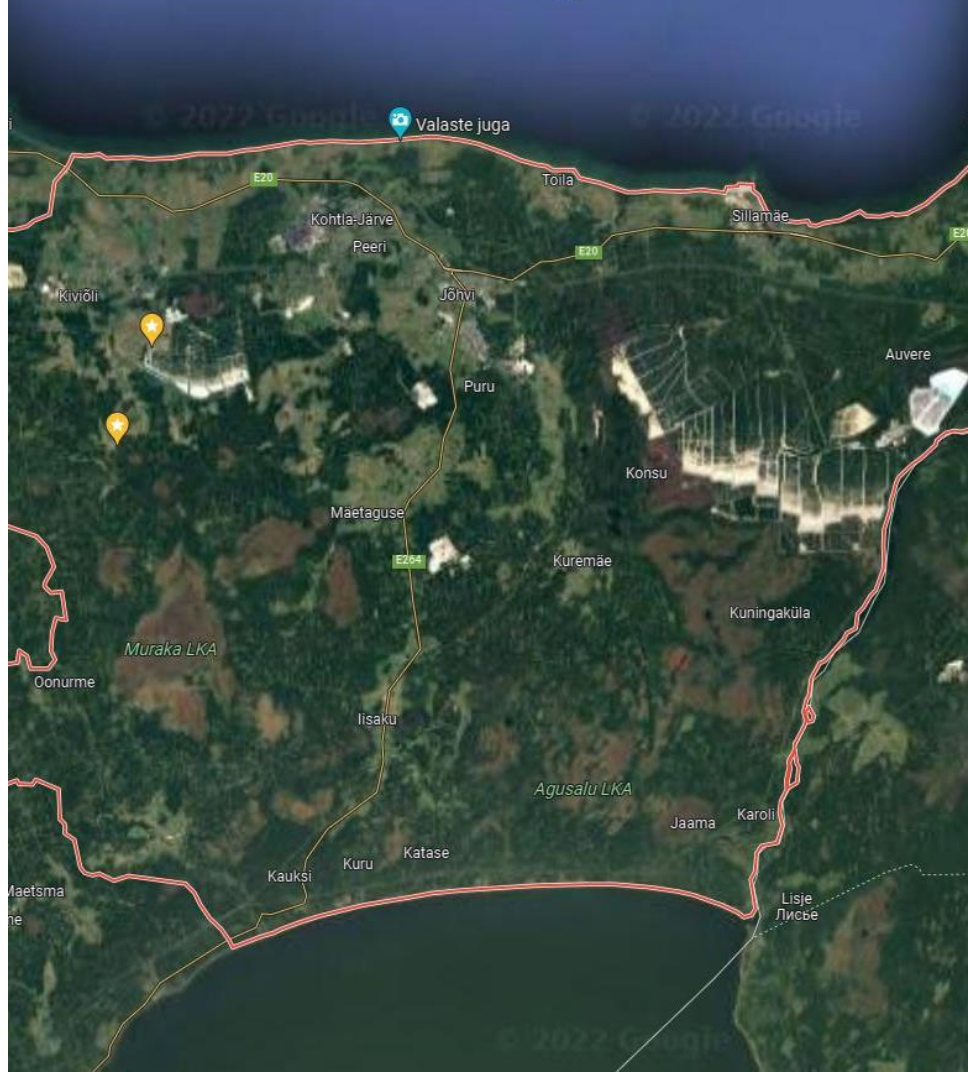
GDP grown 2.7x GHG reduced 63%

Source: Ministry of Environment



Ida-Viru factsheet

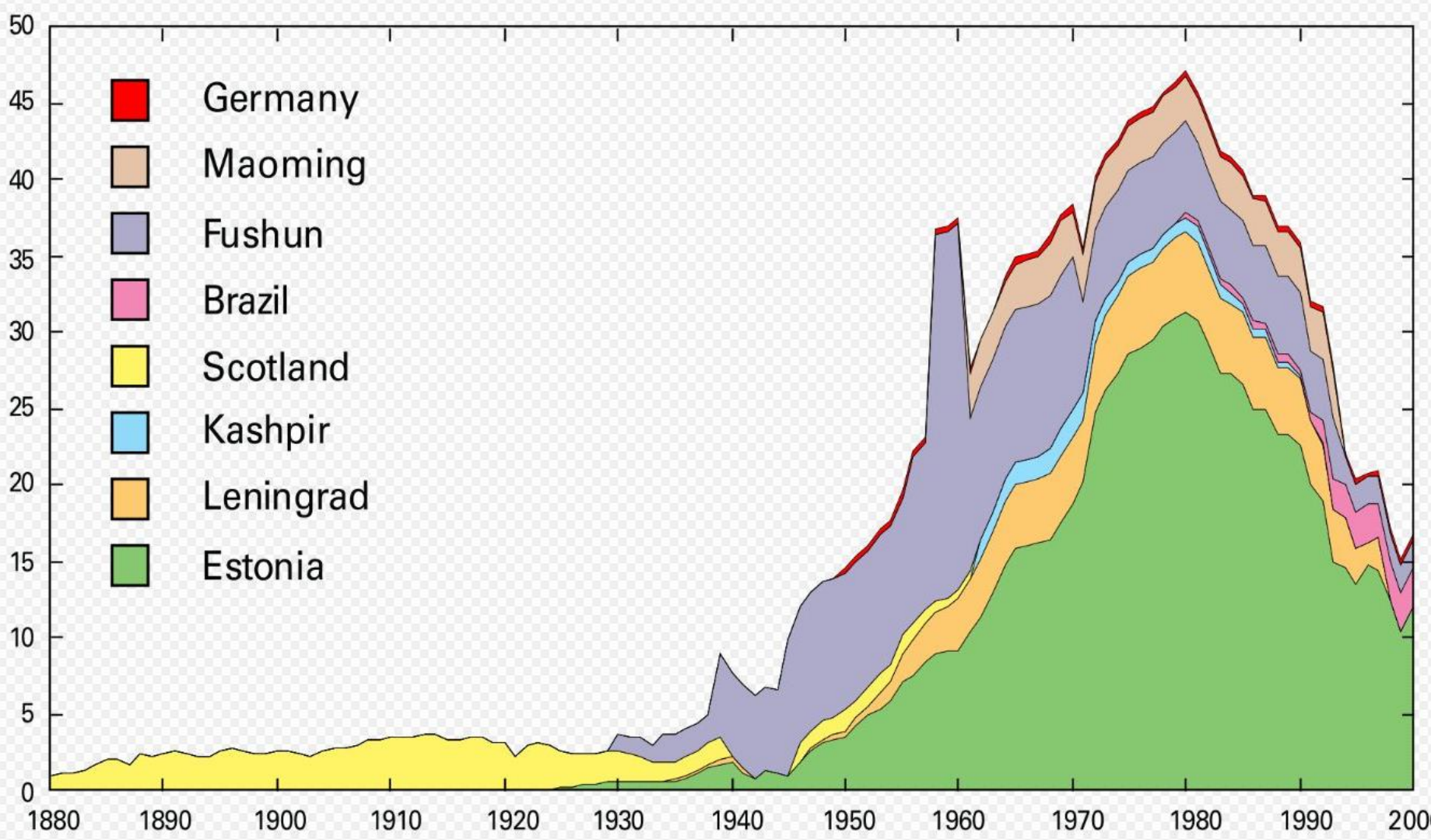
- + **Population** 131 699 (01.01.2022) 10% of Estonia, rapidly ageing and decreasing
- + **Economy** of the region depends on oil-shale sector, **5%** of Estonian national GDP, **2,5 %** of Estonian total employment, **13%** of Ida-Viru employment, **20%** of region's labour taxes, **50%** of Estonian GHG total emissions
- + **Unemployment** rate is 10,9 % (March 2022) Estonian average rate is 7,1%
- + **Relative poverty** is daily reality for 35 % of the region's population (vs. Estonian average is 21%)
- + **Only 17,5 %** of the region's residents speak Estonian as their mother tongue



Oil-shale

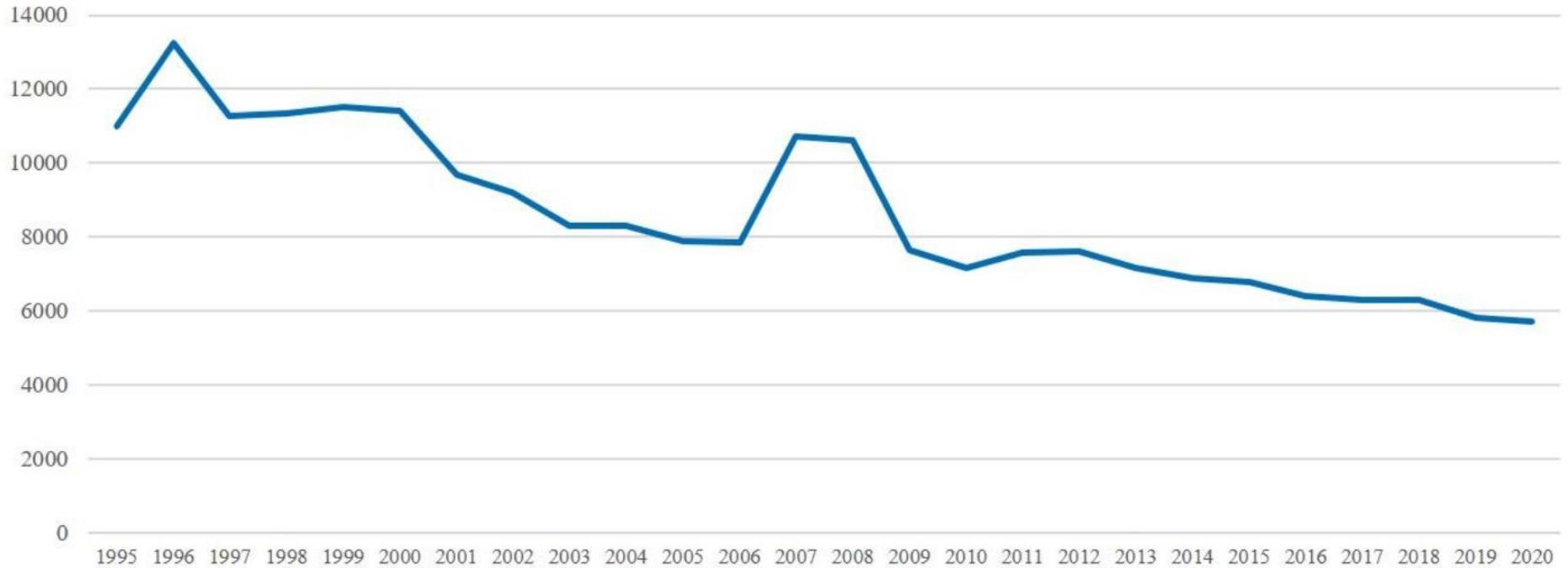
Oil shale is a type of sedimentary rock that is rich in kerogen. Kerogen is a part of rock that breaks down and releases hydrocarbons when heated. Hydrocarbons are substances made entirely of hydrogen and carbon. Petroleum and natural gas are probably the most familiar hydrocarbons. The hydrocarbons in oil shale can be used as an alternative to petroleum or natural gas.

METRIC TONS, MILLIONS



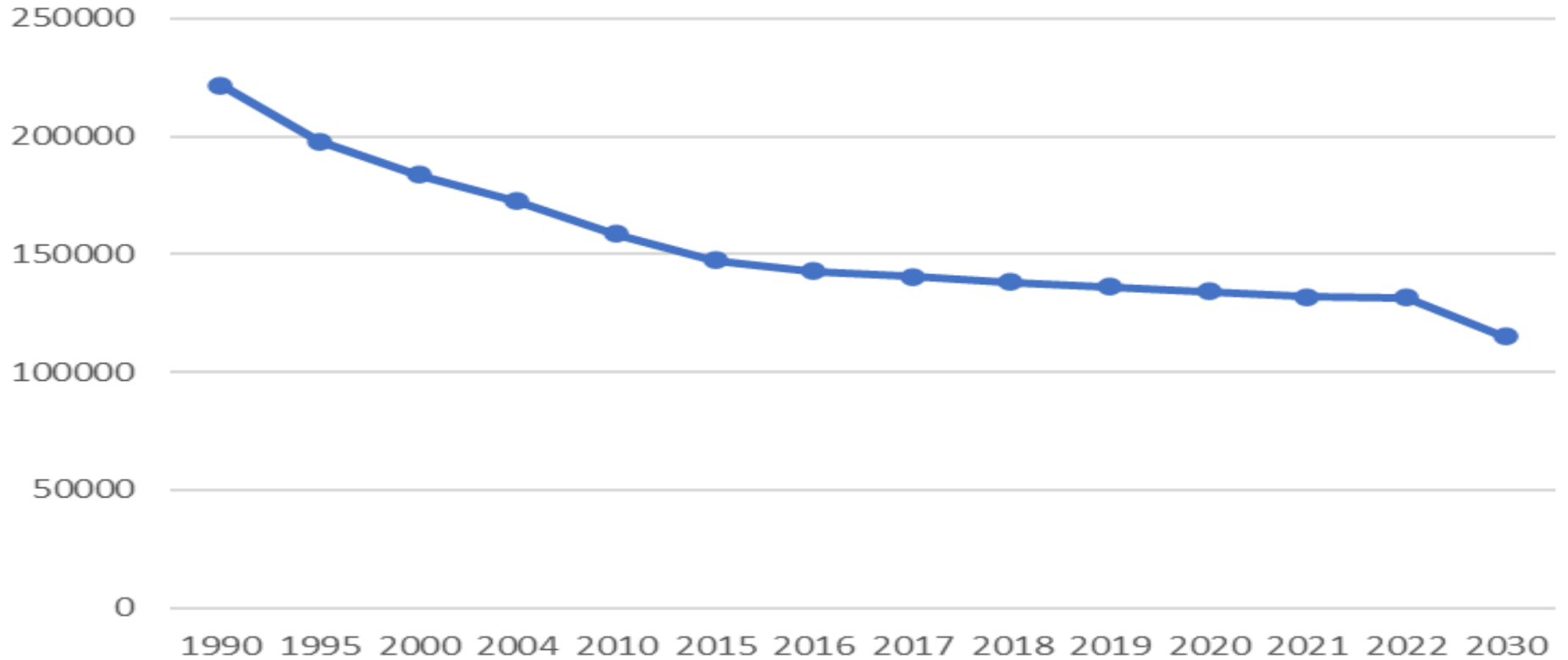
The Transition is ongoing

number of the people employed in oil-shale sector 1995-2020



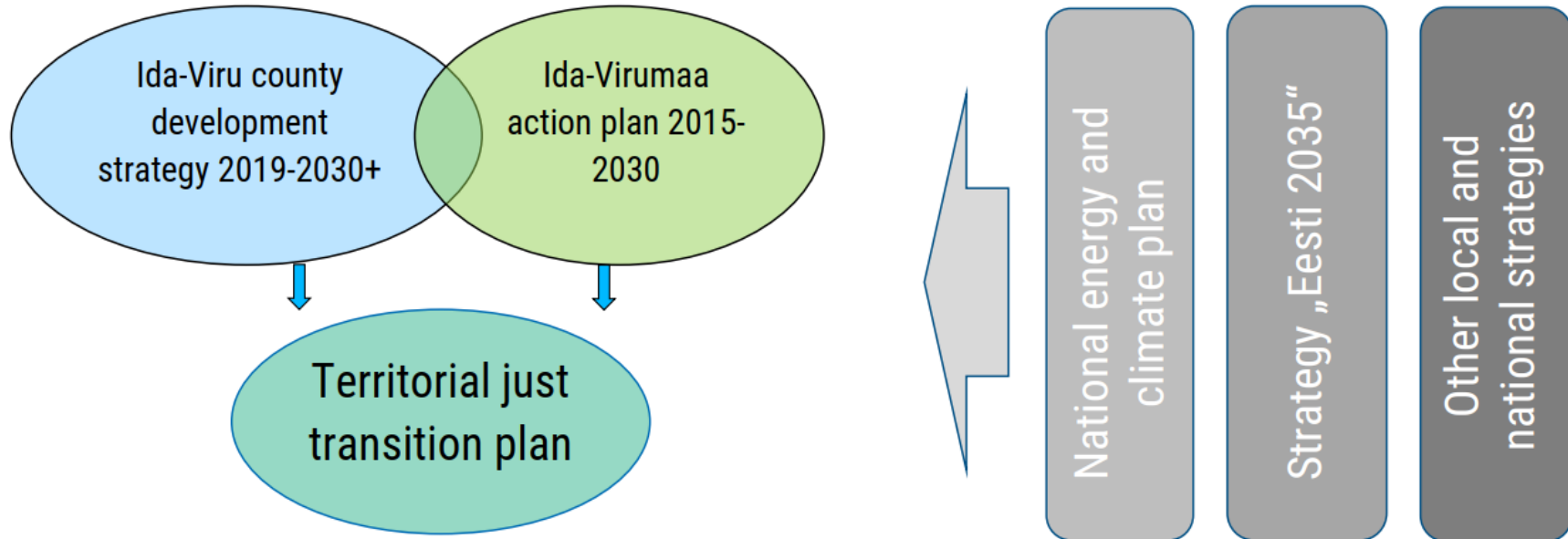
The Transition is ongoing

Population of Ida-Viru county 1990-2022 and prognosis 2030



TJTP strategic framework

- Ministry of Finance is in the process of extending the Ida-Virumaa action plan until 2030.
- Association of Local Authorities of Ida-Viru County has started the process of renewing county development strategy to add stronger focus on the transition process.



The transition in Ida-Viru: Fast relief vs long-term change. Types of actions:

Fast relief



Labor mobility allowances and re-profiling services for oil shale sector employees



Services in support of economic diversification



Support scheme for small enterprises



Increasing the volume of in-service training, vocational and higher education offering

Resulting construction activity helps relieve immediate effects of the transition



Development of social and health services supporting social change



Support for regional initiatives amplifying the just transition

Long-term economic change



Support scheme for industrial investment



Support scheme for increasing the knowledge intensity of enterprises

Long term social and environmental change



Decoupling district heating from oil shale



Alleviating environmental and health impacts of oil shale mining and processing



Investments in JTF-eligible areas by local governments

Challenges



Re-use of mining and industrial areas



Thank you !

Aitäh!



Maciej Sytek

Representative of the Management Board of the Wielkopolska Region for the restructuring of Wielkopolska Wschodnia and President of the Management Board of the Regional Development Agency S.A. in Konin



Thank you

secretariat@coalregions.eu

[Website](#)

#CoalRegionsEU

Twitter: [@Energy4Europe](#)

[DG Energy's YouTube channels](#)

