



Województwo  
Śląskie



16.04.2019

# Silesian. Professional employees

**Platform for Coal and Carbon-Intensive Regions in Transition  
Fourth Working Group**

Sebastian Dyjeciński

Main Specialist in the Department of European Social Fund  
Marshal's Office of the Silesian Voivodship

# Silesian Voivodeship - location



# Silesian Voivodeship in the era of transformation

- partial liquidation of unprofitable mines and related industrial plants, as a result of industrial restructuring at the end of the 20th century, caused a significant increase in unemployment and contributed to the liquidation of vocational schools and technicians related to the industry,
- an increase in the share of the manufacturing industry (eg automotive) with the beginning of the 21st century, while the share of mining and related industries decreased,
- employment drop in mining from 388,000 employees in 1990 to 82,000 in 2018,

# Diagnosed problems in vocational education in the Silesian Voivodeship

- reducing the attractiveness of vocational schools and perceiving them as institutions of worse choice,
- reducing the prestige and importance of vocational schools, and thus discouraging young people from learning at a vocational level,
- neglect of vocational education,
- lack of adequate number of employees with practical skills on the labor market,
- under-investment in vocational education institutions,

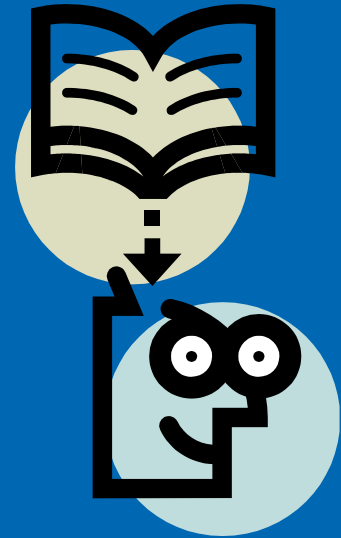
# Silesian. Professional employees

- Project implementation : 2019 – 2022
- Project budget : 20.000.000 zł
  - including:
  - European Social Fund: 17.000.000 zł
  - Subsidy from the state budget: 2.000.000 zł
  - Own contribution: 1.000.000 zł
- Implemented under the Regional Operational Program of the Silesian Voivodeship 2014-2020, Sub-measure: 11.2.3 Support for vocational education - non-competitive procedure



# Key project assumptions

- adjusting the educational offer of vocational schools from the region to the key needs of the economy,
- creation of a cooperation network between the business sector and the area of vocational education,
- increasing the access of vocational education students to internships and apprenticeships at employers,



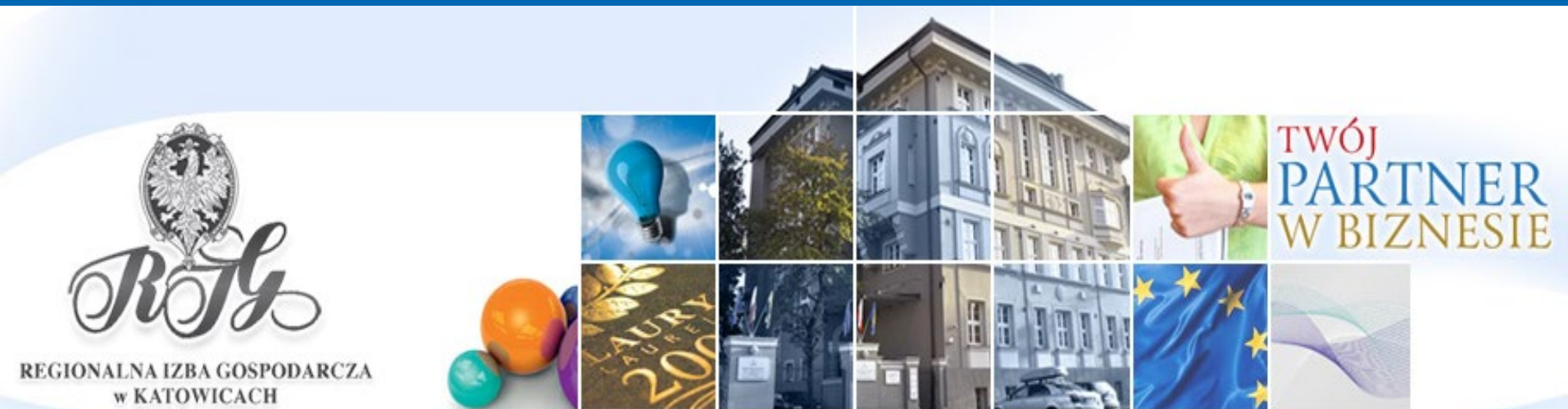
## Project partners

The project will be implemented by Silesian Voivodeship (Beneficiary) in partnership with :

- Chamber of commerce and industry in Katowice
- Katowice Special Economic Zone
- Chamber of Crafts and Small and Medium Enterprises in Katowice

# Chamber of commerce and industry in Katowice

- was founded in 1990,
- it associates around 450 business entities,





# Katowice Special Economic Zone

- was founded in 1996,
- it associates around 350 business entities,
- over 76.000 jobs,



# Chamber of Crafts and Small and Medium Enterprises in Katowice

- was founded 1922,
- the oldest organization of economic self-government in the region,
- over 30.000 jobs,



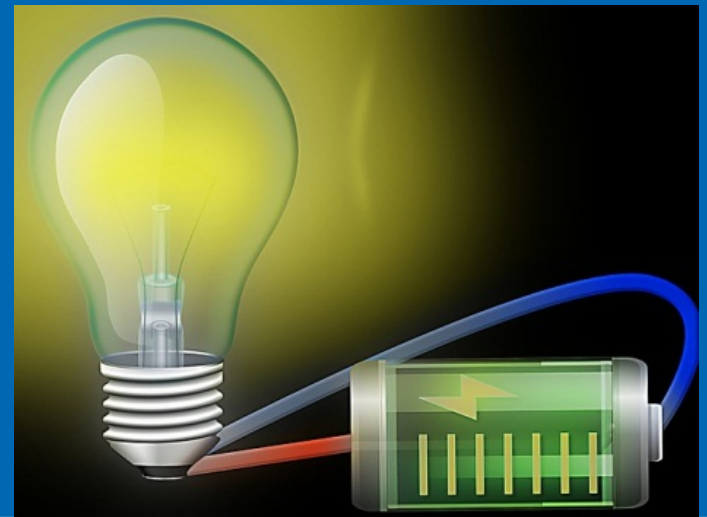
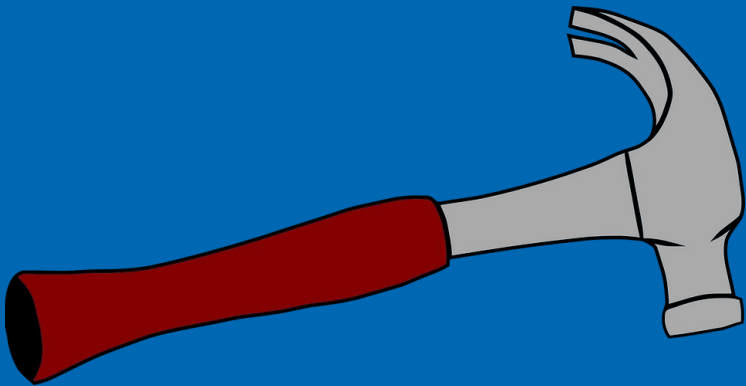
# Planned activities under the project

- internships, additional courses, trainings and classes for students of vocational education schools,
- courses and trainings for teachers of the profession,
- the possibility of practical preparation of the future staff,



# Planned activities under the project

- social campaign regarding vocational education
  - Ambassadors of vocational education,
  - open days for entrepreneurs,
  - demonstration and professional lessons in enterprises,



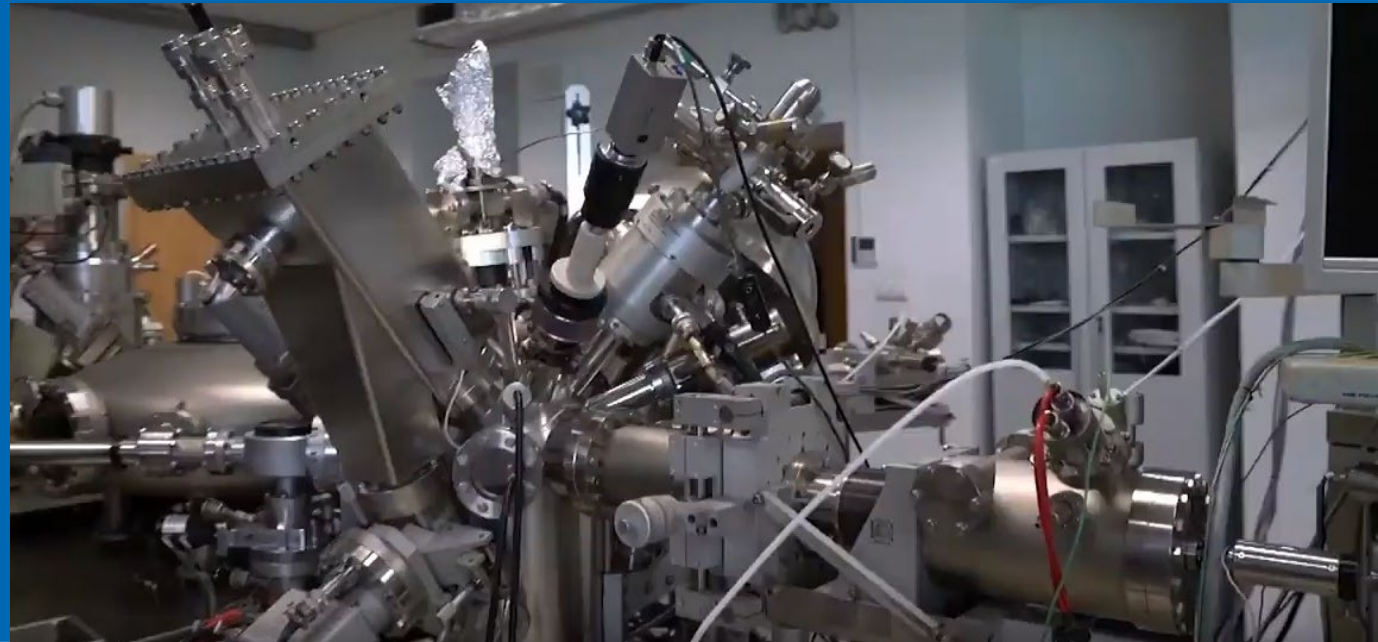
## The main professions covered by the project

The catalog of occupations covered by the project results mainly from the priority technological areas under the Technology Development Program of the Silesian Voivodeship for the years 2010-2020 (PRT 2010-2020). It is a document that serves as a strategic plan for the development of innovation and reflects the need for a systematic approach to the issue of strengthening the region's competitive position.

# The main professions covered by the project

The project will mainly support priority technology areas :

- technologies for the power industry,
- information and communications technologies,
- machine and automotive industry.





Województwo  
Śląskie



# Thank you for your attention

Marshal's Office of the Silesian Voivodship  
Department of European Social Fund  
Project Implementation Department

[efs@slaskie.pl](mailto:efs@slaskie.pl)  
[www.slaskie.pl](http://www.slaskie.pl)



Rzeczpospolita  
Polska



Unia Europejska  
Europejski Fundusz Społeczny

