



Global BOD Group

Corporate presentation 2019



DEDICATED TO LONG-TERM SUSTAINABILITY

In order to become the civilization we are today, humankind has always taken from nature more than gave it back.

But this has to change, as we can't ignore the devastating effects of our deeds to the planet any longer.

We have to expand our economies and businesses sustainably, minimizing impact on the environment we live in.

SoliTek is here to play an important role in the environmental friendly global movement, producing solar panels using only renewable energy, and championing the Glass-Glass solar panel segment, whose production requires less CO₂ intense raw materials.

Let's grow together.

Vidmantas Janulevičius
*Founder and Chairman of the Board,
Global BOD Group, SoliTek*



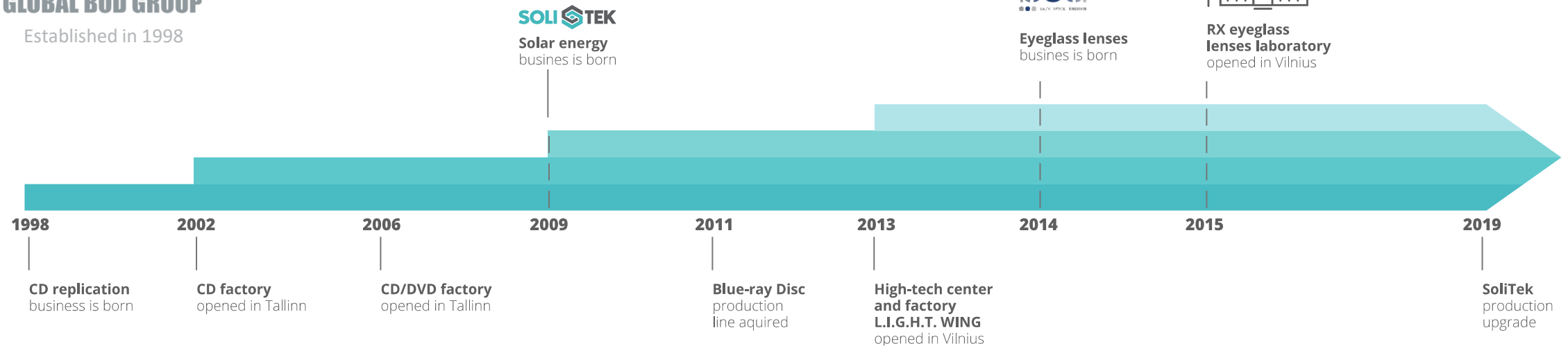
THE BIG PICTURE

SoliTek is a part of the **Global BOD Group** with traditions in engineering, manufacturing and innovation since 1998. The group operates across 3 manufacturing industries:

- Solar technologies
- Progressive lenses
- CD / DVD / LP media



Established in 1998



KNOW-HOW AND SPECIALIZATION



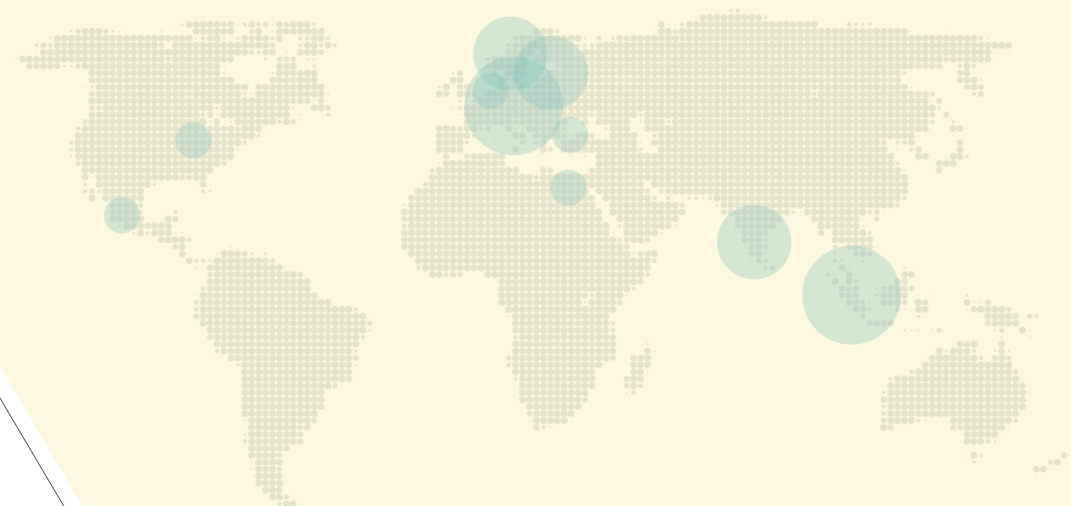
AMBITIOUS BRAND FOR MARKET EXPERTS

SoliTek researches, develops, manufactures, sells and installs solar cells & panels.

Any size project, any panel type.

Our specialization is top quality, EU manufactured glass-glass panels, designed for rooftops of any size and type.

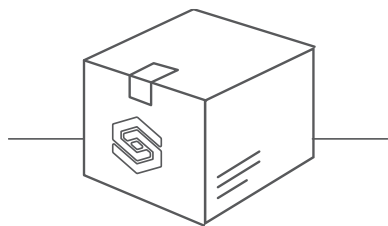
We work with installers and distributors, as well private customers all across the EU.



● Historical sales and projects

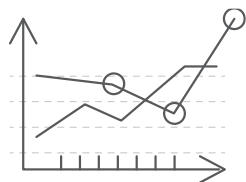
Share capital	8.6 Million EUR
Assets growth	14%
People power	70 employees
Capacity	50 MW

FACTS & FIGURES



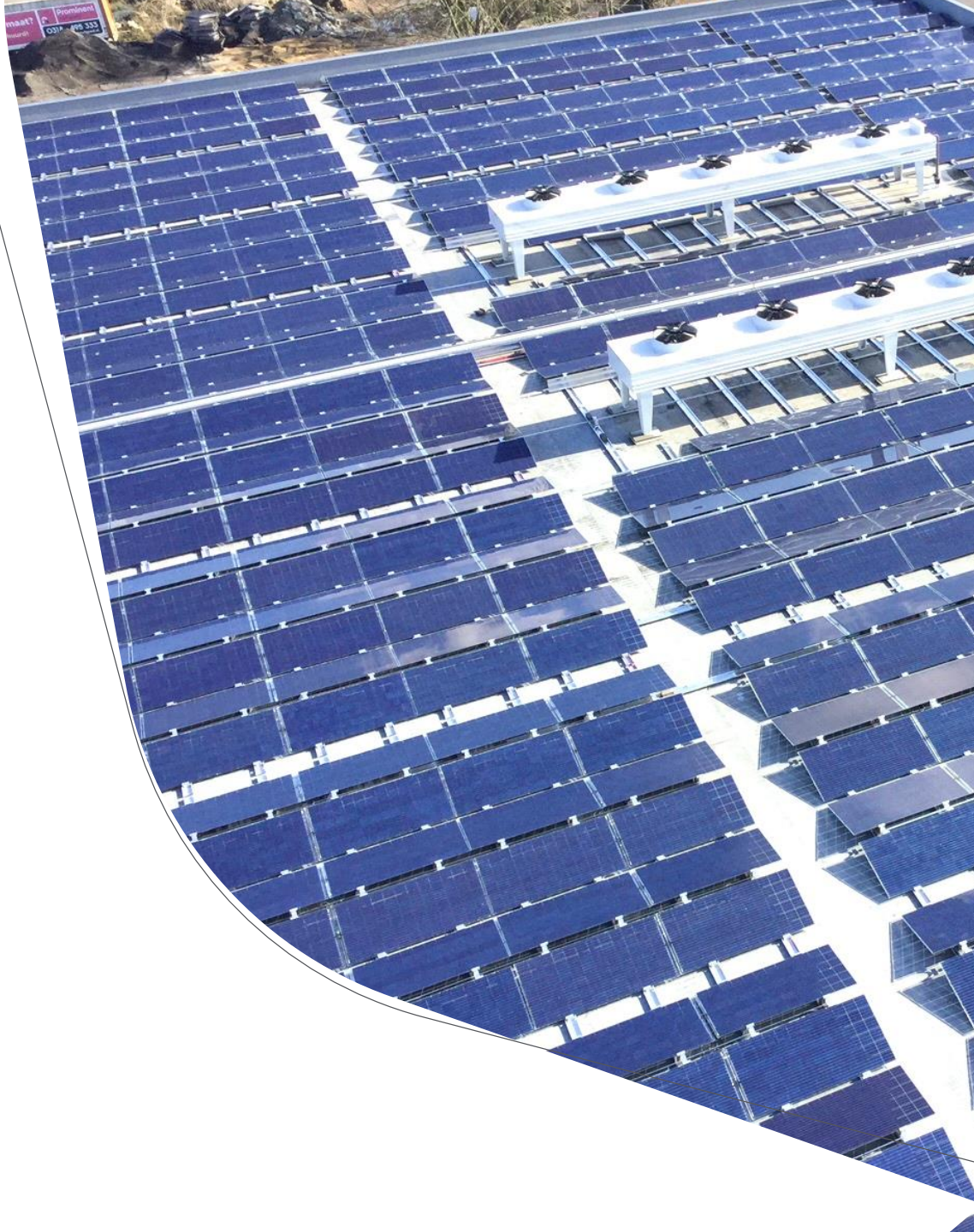
SOLITEK PRODUCTION, 2018:

- 100K panels
- 27 MW total produced capacity



SOLITEK PRODUCTION FORECAST, 2019:

- 200K panels
- 50 MW total produced capacity



THE L.I.G.H.T WING

The Lithuanian Incubator of Green and High Technologies (L.I.G.H.T.) hosts SoliTek R&D, manufacturing & head office in Vilnius, Lithuania.

Constructed by Global BOD Group in 2011.

In 2013 recognized by German Chamber of Commerce as the “Greenest Industrial Building in Europe”.

Production is powered and cooled by renewable energy mix – both solar (150 kW on the roof) and geothermal.



LEADERSHIP THROUGH INNOVATION

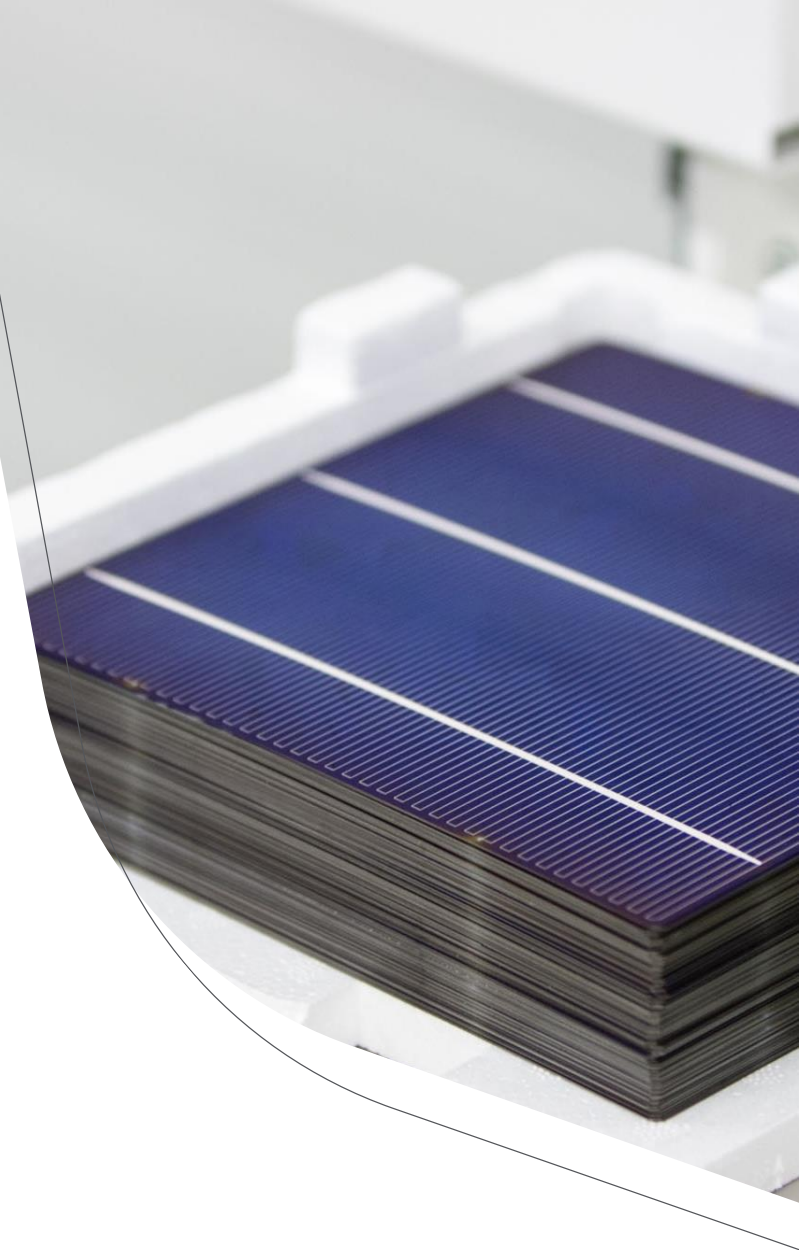
As well as a fast growing business, we are a scientific institution.

SoliTek started in 2009 as a photovoltaic cell research & small production center.

Since then we have grown to the most advanced Northern European solar technology manufacturer, with ultimate technology and local market know-how.

SOLAR TECHNOLOGY R&D:

1. Cell recycling
(Horizon 2020/CABRISS)
2. Cell efficiency
3. Panel efficiency



PARTNERS IN RESEARCH

UNIVERSITIES:

- ISC Konstanz (DE)
- CEA-INES (FR)
- SINTEF (NOR)
- Fraunhofer ISE (DE)
- Fraunhofer CSP (DE)
- DTU (DK)
- KTU (LT)
- VU (Lithuania)
- PROTECH (Lithuania)

MEMBERSHIP:



PROGRAMS:



OUR CUSTOMERS

Over **60%** of our solar panels is exported to **Sweden, Norway, and Germany**. Over **90%** to the **EU** as a whole.

The majority are PV installers, distributors, and project developers in the EU.



SOLITEK PLAN 2019:

- New solar panel manufacturing line installed
- Production capacity expansion up to 180 MW

TOTAL FOCUS ON CUSTOMER:

- New residential installations company launched
- New building integrated PV (BIPV) services for corporate clients



PRODUCT PORTFOLIO



Glass - Foil
STANDARD
270W/300W



Glass - Glass PRO
270W/300W



Glass - Glass
SOLRIF
270W/300W



Glass - Glass
Framed



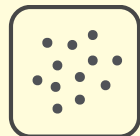
Glass - Glass
SolidWALL



Glass - Glass
BIFACIAL



SELF-CLEANING
EFFECT



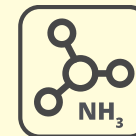
SALT MIST
RESISTANCE



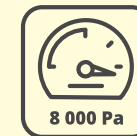
FIRE CLASS A



DUST & SAND
RESISTANCE



AMMONIA
RESISTANCE



EXTREME LOAD
RESISTANCE

THE LEADER



CERTIFICATIONS:



IEC 61215
IEC 61730



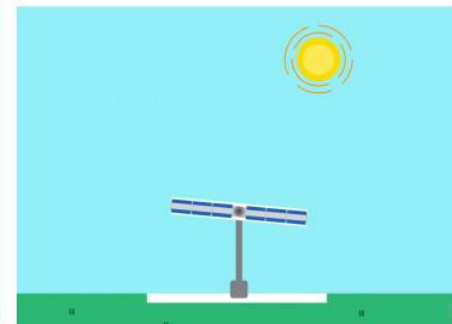
GLASS – GLASS BIFACIAL

SOLID Bifacial



Specifications:

- 300W / 340W front side
- Up to 75W / 85W backside
- 60 / 72 Mono N-Type Cells



GLASS-GLASS ADVANTAGES



**SELF-CLEANING
EFFECT**



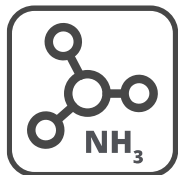
**SALT MIST
RESISTANCE**



FIRE CLASS A



**DUST & SAND
RESISTANCE**



**AMMONIA
RESISTANCE**



**EXTREEME LOAD
RESISTANCE**

8 000 Pa



SOLITEK BIPV

New building integrated PV

New era Glass/Glass modules are developed and manufactured using electricity only from solar and geothermal energy - 100% renewable energy sources.

SoliTek is dedicated to client satisfaction and is able to customize production to fulfill clients' needs, unlike some of other major solar products manufacturers. Annual production capacity - 90 MW.

SoliTek BIPV is building integrated photovoltaic producer, supplying technologically advanced solar modules and solutions created to achieve architectural design in Nordic and Baltic region.



Facade, 44 kW, Estonia

SOLITEK PROJECTS WORLDWIDE

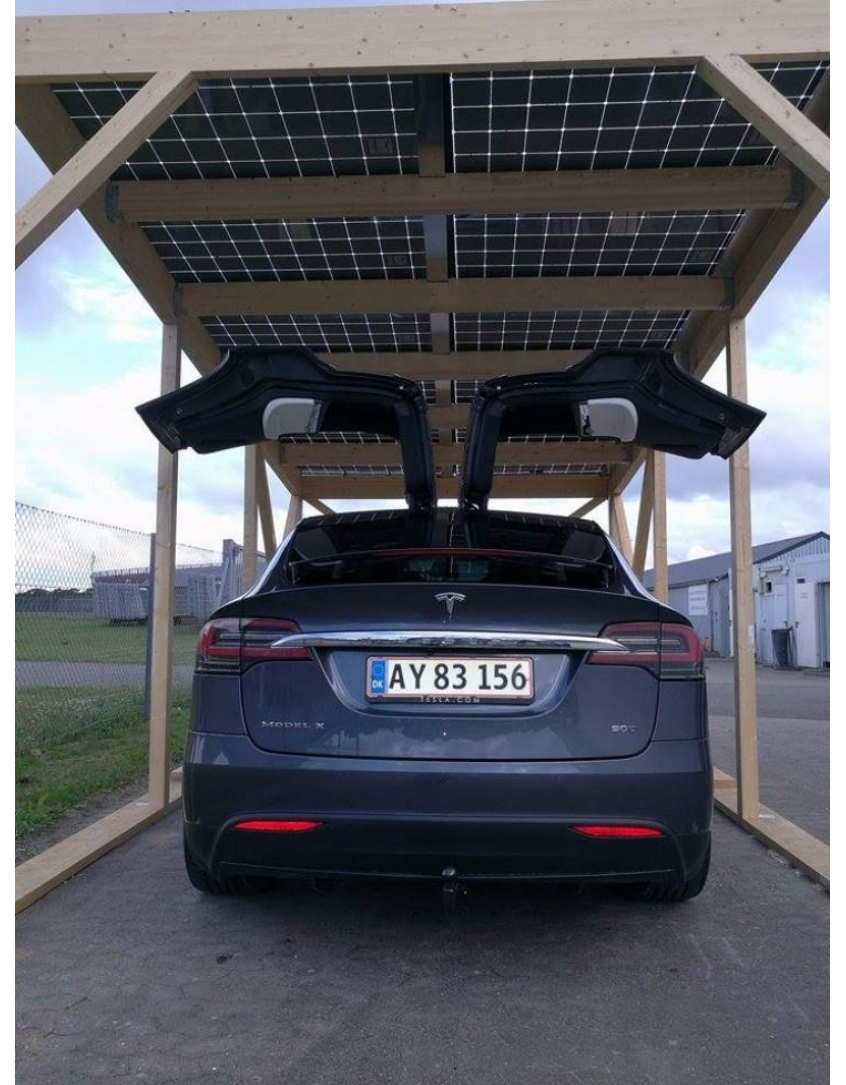


**4,6 MW solar modules in Turkey
(Bursa).**

Electricity delivery to 1100 homes.



**Customized greenhouse, 23 kW,
Sweden**



**Wooden Carport, GreenEnergy, 3.48 kW,
Norway**

SOLITEK PROJECTS WORLDWIDE



Ankara project 2 MW, Turkey



Perak Pepper Plantation 1.5 MW, Malaysia

SOLITEK PROJECTS IN LITHUANIA

We have started to install residential solar power plants to end customers in 2018.

New EU subsidies for residential market in Lithuania let the solar boom begin. And we are trying to take big role in it.



SOLITEK PROJECTS IN LITHUANIA

Cooperation between scientists, engineers, technicians and installers lets us to make any solar dream come true.

Example:

- portable off-grid 3 kW solar power plant.
- usual 2-30 kW solar power plant to any residential customer in Lithuania in few weeks.
- any size solar power plant to commercial customer.



THANK YOU!

www.globalbodgroup.com

Mokslininkų g. 6A, Vilnius |

office@bod.lt

